

EIBACH RACE SPRING SYSTEMS

Eibach Double-Spring System

Suspension tuning is a precise balance. On one hand, the spring system should be soft enough to absorb track irregularities assuring maximum adhesion, while on the other hand the spring system must be firm enough to reduce the body roll, squat, and dive of the vehicle during cornering, acceleration and braking. For optimum balance, Eibach has developed the ERS double-spring system. By combining Eibach Main, Tender and/or Helper springs, the suspension engineer or weekend racer can create the perfect combination of spring rates for the ultimate suspension set-up. With our extensive range of motorsport spring sizes and rates—our ERS double-spring system is unsurpassed in performance and flexibility. For Off-Road racing where extreme wheel travel is a must—combining two different rate main springs gives you the softer rate required for small bumps and a stiffer final rate to prevent bottoming on the bigger bumps and jumps.

For more information on the Double Spring System go to eibach.com/offroad-guide.



Eibach Main And Tender System

The Eibach Main and Tender spring concept provides a softer initial rate when both springs are compressed together, then delivers the desired firmer final rate once the tender spring closes completely. The Main spring has a linear-rate characteristic and determines the final rate of the system. The Tender springs are available in linear or progressive-rate (shown) and determine the initial rate of the spring-system.



Eibach Main And Helper System

A Helper spring is used to prevent the Main spring from becoming loose in the spring seat when the suspension is unloaded or at full droop. The Helper spring, unlike the Tender spring, has very little spring rate, and therefore has no effect on the suspension characteristics of the vehicle. Up to 2" (50mm) of spring-to-perch gap can be covered with the use of a Helper spring.



EIBACH ACCESSORIES

SPRING BAGS | Keep the Dirt Out

- Made from Lightweight Material
- Eliminates Mud Packing Inside Coils
- Keeps Spring Adjuster and Damper Shaft Clean-Extends Damper Life
- Reinforced Wear Bars for Long Life
- Washable Material
- Easily Opened for Shock & Spring Adjustment



Part Number	Quantity	Spring Diameter		Spring Length	
		inch	mm	inch	mm
SPRING BAGS (Nylon)					
Protective Spring Bags-Pair (Fits 1.88" I.D. Springs)					
ESB12.188	2	1.88	48	10" - 12"	254-305
Protective Spring Bags-Pair (Fits 2.25" I.D. Springs)					
ESB12.225	2	2.25	57	10" - 12"	254-305
Protective Spring Bags-Pair (Fits 2.50" I.D. Springs)					
ESB10.250	2	2.50	64	8" - 10"	203-254
ESB12.250	2	2.50	64	10" - 12"	254-305
ESB14.250	2	2.50	64	12" - 14"	305-356
ESB16.250	2	2.50	64	14" - 16"	356-406
Protective Spring Bags-Pair (Fits 2.50"-3.00" I.D. XT Barrel Springs)					
ESB12.300	2	2.50-3.00	64-76	10" - 12"	254-305
ESB14.300	2	2.50-3.00	64-76	12" - 14"	305-356
ESB16.300	2	2.50-3.00	64-76	14" - 16"	356-406
Protective Spring Bags-Pair (Fits 3.00" I.D. Springs)					
ESB12.300	2	3.00	76	10" - 12"	254-305
ESB14.300	2	3.00	76	12" - 14"	305-356
ESB16.300	2	3.00	76	14" - 16"	356-406
Protective Spring Bags-Pair (Fits 5.00" O.D. Springs)					
ESB14.500	2	5.00	127	12" - 14"	305-356
ESB16.500	2	5.00	127	14" - 16"	356-406
Protective Spring Bag (Fits Pull Bar Springs)					
ESB875.500	1	5.00	127	8.75"	222
Protective Spring Bag (Fits 6th Coil Springs)					
ESB5.400	1	5.00	127	4"	102
SPRING BAGS (Neoprene)					
Protective Neoprene Spring Bags-Pair (Fits 2.50" I.D. Springs)					
ESBN18.250	2	2.50	64	18" - 20"	457-508
ESBN20.250	2	2.50	64	20" - 22"	508-559
ESBN22.250	2	2.50	64	22" - 24"	559-610
ESBN26.250	2	2.50	64	26" - 28"	660-711
ESBN30.250	2	2.50	64	30" - 32"	762-813
Protective Neoprene Spring Bags-Pair (Fits 3.00" I.D. Springs)					
ESBN20.300	2	3.00	76	20" - 22"	508-559
ESBN22.300	2	3.00	76	22" - 24"	559-610

EIBACH ACCESSORIES

COIL SLEEVE | Critical Spring Tuning

- Eliminate Frame Drag while using Softer Spring Rates
- Allows Critical Travel Adjustability without Rate Change
- Spring Stays Linear
- Durable—Will Withstand 2500LBS of Load
- Includes Adhesive Strip to Stay in Place



Part Number	Quantity	Spring Diameter Range		Spring Wire Diameter Range		Coil Sleeve Length	
		inch	mm	inch	mm	inch	mm
Coil Sleeve (Fits 2.50" I.D. Springs)							
CS3001	1	2.50-3.50	64-89	0.423-0.541	10.75-13.75	10.31	262
CS3002	1	2.50-3.50	64-89	0.551-0.650	14.00-16.50	10.31	262
Coil Sleeve (Fits 5.00" O.D. Springs)							
CS5001 (NASCAR Approved)	1	4.50-6.00	114-152	0.423-0.541	10.75-13.75	13.43	341
CS5001L	1	4.50-6.00	114-152	0.423-0.541	10.75-13.75	16.50	419
CS5002 (NASCAR Approved)	1	4.50-6.00	114-152	0.551-0.650	14.00-16.50	13.43	341
CS5002L	1	4.50-6.00	114-152	0.551-0.650	14.00-16.50	16.50	419

SPRING LOCATORS | Precision Fitment

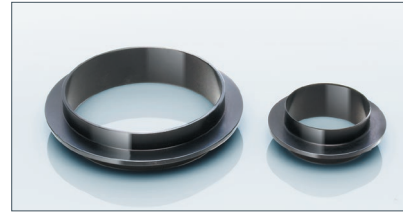
- Lightweight and Durable Aluminum Design
- CNC Precision Machined for Accuracy
- Maintains Critical Spring Fitment
- Eliminates Spring Movement



Part Number	Quantity	Inside Diameter (Perch O.D.)		Outside Diameter (Spring I.D.)	
		inch	mm	inch	mm
Spring Locator (I.D = Perch Diameter / O.D. = Spring I.D.)					
ESL350.4125	1	3.50	89	4.125	105
ESL350.4188	1	3.50	89	4.188	106
ESL375.4000	1	3.75	95	4.000	102
ESL375.4063	1	3.75	95	4.063	103
ESL375.4125	1	3.75	95	4.125	105
ESL375.4188	1	3.75	95	4.188	106
ESL375.4313	1	3.75	95	4.313	110
ESL375.4375	1	3.75	95	4.375	111

COUPLING SPACERS | Inside Diameter Coupling Spacers

- Connect Main and Tender (or Helper) Springs
- Inside Diameter Coupling Spacers for our Most Popular ERS Doublespring Applications
- Lightweight and Durable Anodized Aluminum Design
- CNC Precision Machined for Accuracy



Part Number	Quantity	Spring Diameter Range	
		inch	mm
Coupling Spacer (ID locating main to helper/tender)			
SPACER188	1	1.88	48
SPACER225	1	2.25	57
SPACER250	1	2.50	64
SPACER300	1	3.00	76
New! SPACER375	1	3.75	95
1-60-00	1	2.36	60
1-70-00	1	2.76	70

SPRING PERCH ADAPTER | 60mm to 2.50 inch

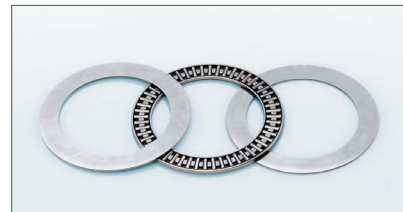
- Extend Your Range of Available Spring Rates
- Adapts 60mm to 2.50 inch ID SAE Springs
- Lightweight and Durable Anodized Aluminum Design
- CNC Precision Machined for Accuracy



Part Number	Quantity	Spring Diameter Range	
		inch	mm
Adapter			
ADAPTER60-250 (Perch Adapter 60mm to 2.50")	1	60 / 2.50	60 / 64

TORSION RELEASE BEARING - TRB | Smoother Deflection

- Reduce Torsional Binding by Removing Friction During Deflection
- Smoother and More Consistent Spring Action Throughout the Entire Range of Deflection
- Allows For Easier And More Precise Ride Height Adjustment by Eliminating Spring Seat Friction



Part Number	Quantity	Spring Diameter Range	
		inch	mm
Torsion Release Bearing			
TRB188	1	1.88	48
TRB200	1	2.00	51
TRB225	1	2.25	57
TRB250	1	2.50	64
TRB300	1	3.00	76

EIBACH ACCESSORIES

BUMP SPRING | Spring and Cap System

Bump Tuning for Dirt or Pavement Applications

Engineered for maximum travel and consistency in the most extreme conditions, the Eibach BUMP-SPRING System offers limitless tuning options for “soft spring” Dirt and Pavement Racers.



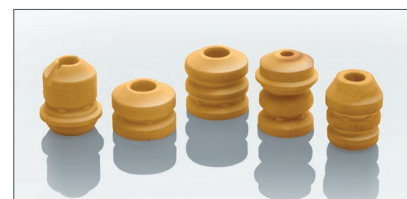
Through on-track development, we’ve engineered a spring and cap system light weight and compact enough to fit Pavement Series setups, with maximum amounts of linear travel needed for Dirt Series Racers. The Consistent performance of the Eibach BUMP-SPRING System translates to increased aero efficiency, maximum grip and superior control at the limit.

- Ultra-Lightweight for Reduced Unsprung Mass
- Maximum Travel in All Rates
- Repeatable Performance—Block and Sag Resistant
- Precision Fit Cap System for 1/2 inch or 5/8 inch Shaft Sizes
- Made By Eibach in the USA

Part Number	Length		Inside Diameter		Rate			Block Height		Travel		Load at Block Height		Weight	
	inch	mm	inch	mm	lbs/inch	kg/mm	N/mm	inch	mm	inch	mm	lbs	N	lbs	kg
Bump Spring															
New! 0225.200.0550	2.25	57	2.00	51	550	9.82	96	1.06	27	1.19	30	654	2,909	.285	.129
New! 0225.200.0650	2.25	57	2.00	51	650	11.61	114	1.10	28	1.15	29	749	3,332	.315	.142
New! 0225.200.0750	2.25	57	2.00	51	750	13.39	131	1.10	28	1.15	29	861	3,828	.335	.151
New! 0225.200.0850	2.25	57	2.00	51	850	15.18	149	1.22	31	1.03	26	873	3,885	.365	.165
New! 0225.200.0950	2.25	57	2.00	51	950	16.97	166	1.21	31	1.04	26	987	4,392	.395	.179
New! 0225.200.1050	2.25	57	2.00	51	1,050	18.75	184	1.29	33	0.96	24	1,010	4,492	.425	.192
New! 0225.200.1250	2.25	57	2.00	51	1,250	22.32	219	1.34	34	0.91	23	1,137	5,057	.445	.201
New! 0225.200.1400	2.25	57	2.00	51	1,400	25.00	245	1.38	35	0.87	22	1,218	5,414	.475	.215
New! 0225.200.1500	2.25	57	2.00	51	1,500	26.79	263	1.42	36	0.83	21	1,242	5,525	.495	.224
New! 0225.200.1600	2.25	57	2.00	51	1,600	28.57	280	1.47	37	0.78	20	1,248	5,600	.505	.229
Bump Spring Cap															
New! BSC.500	0.16	4	0.500	12.70											
New! BSC.625	0.16	4	0.625	15.88											

BUMP STOPS | Secondary Spring Tuning

- Made From a Race-Proven Micro-Cellular Polyurethane Elastomer
- Tremendous Deflection Potential with Near-Zero Lateral Expansion
- Progressive Compression Characteristics
- Extensive Range of Rates and Dimensions for Maximum Tuning Flexibility



Part Number	Quantity	Length		Inside Diameter		Outside Diameter		Rate	
		inch	mm	inch	mm	inch	mm	lbs/inch	N/mm
EBS770015	1	1.57	40	0.71	18	2.24	57	1,887	330
EBS770034	1	1.81	46	0.79	20	2.36	60	1,514	265
EBS770014	1	2.10	54	0.71	18	2.24	57	1,185	207
EBS770040	1	2.17	55	0.08	19	2.24	57	1,229	215
EBS770006	1	2.48	63	0.71	18	1.97	50	1,088	190
EBS770021	1	2.48	63	0.81	20	2.05	52	1,172	205
EBS770052	1	2.56	65	0.71	18	1.89	48	900	158
EBS770016	1	2.68	68	0.81	20	2.05	52	990	173
EBS770020	1	2.68	68	0.79	20	2.36	60	947	166
EBS770044	1	2.72	69	0.75	19	2.36	60	965	169
EBS770051	1	2.72	69	0.91	23	2.05	52	976	171
EBS770045	1	2.76	70	0.71	18	2.36	60	910	159
EBS770047	1	2.76	70	0.71	18	2.01	51	909	159
EBS770060	1	2.76	70	0.35	9	2.01	51	1,011	177



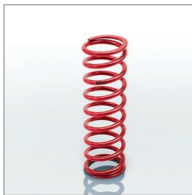
COILOVER | 1.63" I.D. (Quarter Midget)

Part Number	Length		Inside Diameter		Rate			Block Height		Travel		Load at Block Height		Weight	
	inch	mm	inch	mm	lbs/inch	kg/mm	N/mm	inch	mm	inch	mm	lbs	N	lbs	kgs
3.50 (length in inches)															
0350.163.0080	3.50	89	1.63	41	80	1.43	14	1.02	26	2.48	63	198	881	0.22	0.10
0350.163.0085	3.50	89	1.63	41	85	1.52	15	0.98	25	2.52	64	214	951	0.22	0.10
0350.163.0090	3.50	89	1.63	41	90	1.61	16	0.94	24	2.56	65	230	1,023	0.20	0.09
0350.163.0095	3.50	89	1.63	41	95	1.70	17	1.06	27	2.44	62	231	1,029	0.24	0.11
0350.163.0100	3.50	89	1.63	41	100	1.79	18	1.02	26	2.48	63	248	1,101	0.22	0.10
0350.163.0105	3.50	89	1.63	41	105	1.88	18	1.14	29	2.36	60	248	1,102	0.26	0.12
0350.163.0110	3.50	89	1.63	41	110	1.96	19	1.10	28	2.40	61	264	1,173	0.26	0.12
0350.163.0115	3.50	89	1.63	41	115	2.05	20	1.06	27	2.44	62	280	1,247	0.24	0.11
0350.163.0120	3.50	89	1.63	41	120	2.14	21	1.18	30	2.32	59	278	1,237	0.29	0.13
0350.163.0125	3.50	89	1.63	41	125	2.23	22	1.14	29	2.36	60	295	1,311	0.29	0.13
0350.163.0130	3.50	89	1.63	41	130	2.32	23	1.10	28	2.40	61	312	1,386	0.29	0.13
0350.163.0135	3.50	89	1.63	41	135	2.41	24	1.10	28	2.40	61	324	1,440	0.26	0.12
0350.163.0140	3.50	89	1.63	41	140	2.50	25	1.22	31	2.28	58	319	1,419	0.31	0.14
0350.163.0145	3.50	89	1.63	41	145	2.59	25	1.18	30	2.32	59	336	1,495	0.31	0.14
0350.163.0150	3.50	89	1.63	41	150	2.68	26	1.14	29	2.36	60	354	1,574	0.29	0.13
5.00 (length in inches)															
0500.163.0070	5.00	127	1.63	41	70	1.25	12	1.30	33	3.70	94	259	1,152	0.31	0.14
0500.163.0075	5.00	127	1.63	41	75	1.34	13	1.42	36	3.58	91	268	1,190	0.36	0.16
0500.163.0080	5.00	127	1.63	41	80	1.43	14	1.46	37	3.54	90	283	1,259	0.36	0.16
0500.163.0085	5.00	127	1.63	41	85	1.52	15	1.40	36	3.60	91	306	1,361	0.35	0.16
0500.163.0090	5.00	127	1.63	41	90	1.61	16	1.45	37	3.55	90	320	1,423	0.37	0.17
0500.163.0095	5.00	127	1.63	41	95	1.70	17	1.47	37	3.53	90	335	1,490	0.38	0.17
0500.163.0100	5.00	127	1.63	41	100	1.79	18	1.52	39	3.48	88	348	1,548	0.40	0.18
0500.163.0105	5.00	127	1.63	41	105	1.88	18	1.57	40	3.43	87	360	1,601	0.43	0.20
0500.163.0110	5.00	127	1.63	41	110	1.96	19	1.53	39	3.47	88	382	1,699	0.41	0.19
0500.163.0115	5.00	127	1.63	41	115	2.05	20	1.55	39	3.45	88	396	1,761	0.43	0.20
0500.163.0120	5.00	127	1.63	41	120	2.14	21	1.63	41	3.37	86	405	1,802	0.46	0.21
0500.163.0125	5.00	127	1.63	41	125	2.23	22	1.68	43	3.32	84	415	1,846	0.48	0.22
0500.163.0130	5.00	127	1.63	41	130	2.32	23	1.73	44	3.27	83	425	1,890	0.50	0.23
0500.163.0135	5.00	127	1.63	41	135	2.41	24	1.78	45	3.22	82	434	1,931	0.53	0.24
0500.163.0140	5.00	127	1.63	41	140	2.50	25	1.73	44	3.27	83	457	2,033	0.52	0.24
0500.163.0145	5.00	127	1.63	41	145	2.59	25	1.68	43	3.32	84	481	2,140	0.50	0.23
0500.163.0150	5.00	127	1.63	41	150	2.68	26	1.74	44	3.26	83	490	2,180	0.53	0.24



COILOVER | 1.88" I.D.

Part Number	Length		Inside Diameter		Rate			Block Height		Travel		Load at Block Height		Weight	
	inch	mm	inch	mm	lbs/inch	kg/mm	N/mm	inch	mm	inch	mm	lbs	N	lbs	kgs
8.00 (length in inches)															
0800.188.0100	8.00	203	1.88	48	100	1.79	18	2.60	66	5.40	137	539	2,398	1.06	0.48
0800.188.0125	8.00	203	1.88	48	125	2.23	22	2.68	68	5.32	135	664	2,955	1.17	0.53
0800.188.0150	8.00	203	1.88	48	150	2.68	26	2.83	72	5.17	131	774	3,441	1.30	0.59
0800.188.0175	8.00	203	1.88	48	175	3.13	31	3.03	77	4.97	126	868	3,862	1.50	0.68
0800.188.0180	8.00	203	1.88	48	180	3.21	32	3.15	80	4.85	123	873	3,883	1.51	0.68
0800.188.0185	8.00	203	1.88	48	185	3.30	32	3.31	84	4.69	119	868	3,861	1.61	0.73
0800.188.0200	8.00	203	1.88	48	200	3.57	35	3.16	80	4.84	123	967	4,301	1.61	0.73
0800.188.0225	8.00	203	1.88	48	225	4.02	39	3.27	83	4.73	120	1,063	4,728	1.73	0.78
0800.188.0250	8.00	203	1.88	48	250	4.46	44	3.28	83	4.72	120	1,181	5,253	1.78	0.81
0800.188.0280	8.00	203	1.88	48	280	5.00	49	3.42	87	4.58	116	1,281	5,698	1.86	0.84



COILOVER | 1.88" I.D.

Part Number	Length		Inside Diameter		Rate			Block Height		Travel		Load at Block Height		Weight	
	inch	mm	inch	mm	lbs/inch	kg/mm	N/mm	inch	mm	inch	mm	lbs	N	lbs	kgs
0800.188.0300	8.00	203	1.88	48	300	5.36	53	3.50	89	4.50	114	1,346	5,989	2.03	0.92
0800.188.0325	8.00	203	1.88	48	325	5.80	57	3.63	92	4.37	111	1,421	6,321	2.16	0.98
0800.188.0350	8.00	203	1.88	48	350	6.25	61	3.76	96	4.24	108	1,484	6,601	2.31	1.05
10.00 (length in inches)															
1000.188.0050	10.00	254	1.88	48	50	0.89	9	2.49	63	7.51	191	376	1,673	0.86	0.39
1000.188.0060	10.00	254	1.88	48	60	1.07	11	2.60	66	7.40	188	444	1,975	0.95	0.43
1000.188.0070	10.00	254	1.88	48	70	1.25	12	2.76	70	7.24	184	506	2,252	1.06	0.48
1000.188.0080	10.00	254	1.88	48	80	1.43	14	2.95	75	7.05	179	564	2,509	1.19	0.54
1000.188.0090	10.00	254	1.88	48	90	1.61	16	2.99	76	7.01	178	631	2,807	1.26	0.57
1000.188.0100	10.00	254	1.88	48	100	1.79	18	3.27	83	6.73	171	673	2,994	1.41	0.64
1000.188.0110	10.00	254	1.88	48	110	1.96	19	3.27	83	6.73	171	740	3,292	1.41	0.64
1000.188.0120	10.00	254	1.88	48	120	2.14	21	3.46	88	6.54	166	784	3,487	1.54	0.70
1000.188.0130	10.00	254	1.88	48	130	2.32	23	3.57	91	6.43	163	835	3,714	1.71	0.78
1000.188.0145	10.00	254	1.88	48	145	2.59	25	4.25	108	5.75	146	834	3,710	2.14	0.97
1000.188.0160	10.00	254	1.88	48	160	2.86	28	3.83	97	6.17	157	987	4,390	1.96	0.89
1000.188.0175	10.00	254	1.88	48	175	3.13	31	3.98	101	6.02	153	1,053	4,684	2.10	0.95
1000.188.0185	10.00	254	1.88	48	185	3.30	32	4.36	111	5.64	143	1,043	4,641	2.20	1.00
1000.188.0200	10.00	254	1.88	48	200	3.57	35	3.99	101	6.01	153	1,203	5,351	2.18	0.99
1000.188.0225	10.00	254	1.88	48	225	4.02	39	4.56	116	5.44	138	1,223	5,440	2.60	1.18
1000.188.0250	10.00	254	1.88	48	250	4.46	44	4.55	116	5.45	138	1,363	6,063	2.73	1.24
1000.188.0275	10.00	254	1.88	48	275	4.91	48	4.63	118	5.37	136	1,478	6,574	2.86	1.30
1000.188.0300	10.00	254	1.88	48	300	5.36	53	4.39	112	5.61	142	1,683	7,486	2.65	1.20
1000.188.0325	10.00	254	1.88	48	325	5.80	57	4.50	114	5.50	140	1,787	7,949	2.79	1.27
1000.188.0350	10.00	254	1.88	48	350	6.25	61	4.67	119	5.33	135	1,865	8,296	2.98	1.35
1000.188.0400	10.00	254	1.88	48	400	7.14	70	4.57	116	5.43	138	2,171	9,657	2.99	1.36
1000.188.0450	10.00	254	1.88	48	450	8.04	79	4.94	125	5.06	129	2,277	10,129	3.42	1.55
Helper (prevents main spring from becoming loose at full droop)															
HELPER188	2.98	76	1.88	48	12	0.22	2	0.72	18	2.26	57	29	130	0.35	0.14
Spacer (ID locating main to helper/tender coupling spacer)															
SPACER188			1.88	48											
Torsion Release Bearing															
TRB188			1.88	48											

Protective Spring Bags-Pair (Fits 1.88" I.D. Springs)	Qty	Spring Diameter		Spring Length	
		inch	mm	inch	mm
ESB12.188	2	1.88	48	10" - 12"	254-305



COILOVER | 2.00" I.D.

Part Number	Length		Inside Diameter		Rate			Block Height		Travel		Load at Block Height		Weight	
	inch	mm	inch	mm	lbs/inch	kg/mm	N/mm	inch	mm	inch	mm	lbs	N	lbs	kgs
4.00 (length in inches)															
0400.200.0350	4.00	102	2.00	51	350	6.25	61	1.61	41	2.39	61	837	3,723	0.81	0.37
0400.200.0550	4.00	102	2.00	51	550	9.82	96	1.73	44	2.27	58	1,248	5,551	0.99	0.45
0400.200.0650	4.00	102	2.00	51	650	11.61	114	2.03	52	1.97	50	1,282	5,703	1.28	0.58
0400.200.0700	4.00	102	2.00	51	700	12.50	123	1.95	50	2.05	52	1,436	6,388	1.22	0.55
0400.200.0750	4.00	102	2.00	51	750	13.39	131	2.00	51	2.00	51	1,501	6,677	1.29	0.59
0400.200.0800	4.00	102	2.00	51	800	14.29	140	2.02	51	1.98	50	1,586	7,055	1.23	0.56
0400.200.0850	4.00	102	2.00	51	850	15.18	149	1.93	49	2.07	53	1,774	7,890	1.19	0.54
0400.200.0900	4.00	102	2.00	51	900	16.07	158	2.01	51	1.99	51	1,807	8,039	1.28	0.58
0400.200.0950	4.00	102	2.00	51	950	16.97	166	2.13	54	1.89	48	1,790	7,961	1.37	0.62



COILOVER | 2.00" I.D.

Part Number	Length		Inside Diameter		Rate			Block Height		Travel		Load at Block Height		Weight	
	inch	mm	inch	mm	lbs/inch	kg/mm	N/mm	inch	mm	inch	mm	lbs	N	lbs	kgs
0400.200.1000	4.00	102	2.00	51	1,000	17.86	175	2.05	52	1.95	50	1,969	8,757	1.30	0.59
0400.200.1050	4.00	102	2.00	51	1,050	18.75	184	2.13	54	1.87	48	1,984	8,827	1.41	0.64
0400.200.1100	4.00	102	2.00	51	1,100	19.64	193	2.05	52	1.95	50	2,165	9,632	1.37	0.62
0400.200.1150	4.00	102	2.00	51	1,150	20.54	201	2.17	55	1.83	46	2,104	9,359	1.48	0.67
0400.200.1250	4.00	102	2.00	51	1,250	22.32	219	2.17	55	1.83	46	2,283	10,155	1.51	0.68
0400.200.1400	4.00	102	2.00	51	1,400	25.00	245	2.20	56	1.80	46	2,524	11,227	1.56	0.71
0400.200.1700	4.00	102	2.00	51	1,700	30.36	298	2.36	60	1.64	42	2,784	12,384	1.82	0.83
0400.200.1800	4.00	102	2.00	51	1,800	32.14	315	2.26	57	1.74	44	3,125	13,901	1.74	0.79
0400.200.1900	4.00	102	2.00	51	1,900	33.93	333	2.33	59	1.67	42	3,165	14,079	1.83	0.83
0400.200.2100	4.00	102	2.00	51	2,100	37.50	368	2.36	60	1.64	42	3,473	15,447	1.90	0.86
0400.200.2200	4.00	102	2.00	51	2,200	39.29	385	2.40	61	1.60	41	3,521	15,662	1.96	0.89
0400.200.2400	4.00	102	2.00	51	2,400	42.86	420	2.42	61	1.58	40	3,797	16,890	2.39	1.08
0400.200.2600	4.00	102	2.00	51	2,600	46.43	455	2.44	62	1.56	40	4,067	18,091	2.43	1.10
0400.200.2800	4.00	102	2.00	51	2,800	50.09	490	2.58	66	1.42	36	3,974	17,677	2.31	1.05
0400.200.3000	4.00	102	2.00	51	3,000	53.57	525	2.50	64	1.50	38	4,511	20,066	2.20	1.00
0400.200.3500	4.00	102	2.00	51	3,500	62.50	613	2.66	68	1.34	34	4,699	20,902	2.53	1.15
5.00 (length in inches)															
0500.200.0250	5.00	127	2.00	51	250	4.46	44	1.97	50	3.03	77	758	3,372	0.93	0.42
0500.200.0400	5.00	127	2.00	51	400	7.14	70	2.29	58	2.71	69	1,082	4,813	1.28	0.58
0500.200.0425	5.00	127	2.00	51	425	7.59	74	2.30	58	2.70	69	1,147	5,102	1.38	0.63
0500.200.0450	5.00	127	2.00	51	450	8.04	79	2.24	57	2.76	70	1,240	5,517	1.32	0.60
0500.200.0500	5.00	127	2.00	51	500	8.93	88	2.24	57	2.76	70	1,378	6,130	1.39	0.63
0500.200.0550	5.00	127	2.00	51	550	9.82	96	2.32	59	2.68	68	1,472	6,550	1.45	0.66
0500.200.0600	5.00	127	2.00	51	600	10.71	105	2.36	60	2.64	67	1,583	7,040	1.54	0.70
0500.200.0650	5.00	127	2.00	51	650	11.61	114	2.32	59	2.68	68	1,740	7,741	1.45	0.66
0500.200.0700	5.00	127	2.00	51	700	12.50	123	2.38	60	2.62	67	1,836	8,167	1.52	0.69
0500.200.0725	5.00	127	2.00	51	725	12.95	127	2.34	59	2.66	68	1,932	8,594	1.49	0.68
0500.200.0750	5.00	127	2.00	51	750	13.39	131	2.45	62	2.55	65	1,909	8,492	1.62	0.73
0500.200.0800	5.00	127	2.00	51	800	14.29	140	2.56	65	2.44	62	1,956	8,701	1.73	0.78
0500.200.0950	5.00	127	2.00	51	950	16.97	166	2.63	67	2.37	60	2,255	10,031	1.87	0.85
0500.200.1000	5.00	127	2.00	51	1,000	17.86	175	2.54	65	2.46	62	2,464	10,960	1.80	0.82
0500.200.1050	5.00	127	2.00	51	1,050	18.75	184	2.64	67	2.36	60	2,481	11,036	1.92	0.87
0500.200.1100	5.00	127	2.00	51	1,100	19.64	193	2.74	70	2.26	57	2,485	11,054	2.05	0.93
0500.200.1200	5.00	127	2.00	51	1,200	21.43	210	2.77	70	2.23	57	2,672	11,886	2.13	0.97
0500.200.1300	5.00	127	2.00	51	1,300	23.22	228	2.81	71	2.19	56	2,853	12,691	2.20	1.00
0500.200.1350	5.00	127	2.00	51	1,350	24.11	236	2.73	69	2.27	58	3,063	13,625	2.14	0.97
0500.200.1400	5.00	127	2.00	51	1,400	25.00	245	2.86	73	2.14	54	2,994	13,318	2.30	1.04
0500.200.1500	5.00	127	2.00	51	1,500	26.79	263	2.92	74	2.08	53	3,122	13,887	2.40	1.09
0500.200.1600	5.00	127	2.00	51	1,600	28.57	280	2.79	71	2.21	56	3,536	15,729	2.28	1.03
0500.200.1700	5.00	127	2.00	51	1,700	30.36	298	2.84	72	2.16	55	3,667	16,312	2.38	1.08
0500.200.1750	5.00	127	2.00	51	1,750	31.25	306	2.98	76	2.02	51	3,541	15,751	2.56	1.16
0500.200.1900	5.00	127	2.00	51	1,900	33.93	333	2.98	76	2.02	51	3,843	17,094	2.61	1.18
0500.200.2400	5.00	127	2.00	51	2,400	42.86	420	3.19	81	1.81	46	4,334	19,278	3.05	1.38
Helper (prevents main spring from becoming loose at full droop)															
HELPER200	2.83	72	2.00	51	11.00	0.20	2	0.43	11	2.40	61	27	121	0.33	0.15
Torsion Release Bearing															
TRB200			2.00	51											



COILOVER | 2.25" I.D.

Part Number	Length		Inside Diameter		Rate			Block Height		Travel		Load at Block Height		Weight	
	inch	mm	inch	mm	lbs/inch	kg/mm	N/mm	inch	mm	inch	mm	lbs	N	lbs	kgs
4.00 (length in inches)															
0400.225.0450	4.00	102	2.25	57	450	8.04	79	1.61	41	2.39	61	1,081	4,807	1.01	0.46
0400.225.0500	4.00	102	2.25	57	500	8.93	88	1.66	42	2.34	59	1,168	5,195	1.08	0.49
0400.225.0550	4.00	102	2.25	57	550	9.82	96	1.71	43	2.29	58	1,260	5,605	1.14	0.52
0400.225.0700	4.00	102	2.25	57	700	12.50	123	1.82	46	2.18	55	1,529	6,801	1.21	0.55
0400.225.0800	4.00	102	2.25	57	800	14.29	140	1.82	46	2.18	55	1,745	7,762	1.24	0.56
0400.225.0825	4.00	102	2.25	57	825	14.73	144	1.85	47	2.15	55	1,772	7,882	1.28	0.58
0400.225.0850	4.00	102	2.25	57	850	15.18	149	1.88	48	2.12	54	1,799	8,002	1.32	0.60
0400.225.0950	4.00	102	2.25	57	950	16.97	166	1.88	48	2.12	54	2,010	8,941	1.34	0.61
0400.225.1000	4.00	102	2.25	57	1,000	17.86	175	1.97	50	2.03	52	2,029	9,025	1.46	0.66
0400.225.1050	4.00	102	2.25	57	1,050	18.75	184	1.99	51	2.01	51	2,109	9,381	1.50	0.68
0400.225.1075	4.00	102	2.25	57	1,075	19.20	188	1.99	51	2.01	51	2,158	9,600	1.50	0.68
0400.225.1100	4.00	102	2.25	57	1,100	19.64	193	1.99	51	2.01	51	2,208	9,823	1.50	0.68
0400.225.1200	4.00	102	2.25	57	1,200	21.43	210	2.01	51	1.99	51	2,385	10,609	1.56	0.71
0400.225.1250	4.00	102	2.25	57	1,250	22.32	219	2.10	53	1.90	48	2,372	10,551	1.68	0.76
0400.225.1300	4.00	102	2.25	57	1,300	23.22	228	2.03	52	1.97	50	2,559	11,383	1.61	0.73
0400.225.1350	4.00	102	2.25	57	1,350	24.11	236	2.12	54	1.88	48	2,535	11,276	1.73	0.78
0400.225.1400	4.00	102	2.25	57	1,400	25.00	245	2.10	53	1.90	48	2,662	11,841	1.71	0.78
0400.225.1800	4.00	102	2.25	57	1,800	32.14	315	2.27	58	1.73	44	3,115	13,856	2.03	0.92
0400.225.1900	4.00	102	2.25	57	1,900	33.93	333	2.22	56	1.78	45	3,387	15,066	1.97	0.89
0400.225.2000	4.00	102	2.25	57	2,000	35.72	350	2.26	57	1.74	44	3,482	15,489	2.06	0.93
0400.225.2300	4.00	102	2.25	57	2,300	41.07	403	2.34	59	1.66	42	3,812	16,957	2.23	1.01
0400.225.2400	4.00	102	2.25	57	2,400	42.86	420	2.41	61	1.59	40	3,810	16,948	2.35	1.07
0400.225.2500	4.00	102	2.25	57	2,500	44.64	438	2.36	60	1.64	42	4,109	18,278	2.28	1.03
0400.225.2600	4.00	102	2.25	57	2,600	46.43	455	2.43	62	1.57	40	4,092	18,202	2.40	1.09
0400.225.2800	4.00	102	2.25	57	2,800	50.09	490	2.44	62	1.56	40	4,370	19,439	2.46	1.12
0400.225.3000	4.00	102	2.25	57	3,000	53.57	525	2.45	62	1.55	39	4,647	20,671	2.52	1.14
0400.225.3200	4.00	102	2.25	57	3,200	57.15	560	2.49	63	1.51	38	4,826	21,467	2.61	1.18
0400.225.3400	4.00	102	2.25	57	3,400	60.72	595	2.53	64	1.47	37	4,990	22,197	2.71	1.23
5.00 (length in inches)															
0500.225.0350	5.00	127	2.25	57	350	6.25	61	1.95	50	3.05	77	1,068	4,751	1.24	0.56
0500.225.0400	5.00	127	2.25	57	400	7.14	70	1.97	50	3.03	77	1,213	5,394	1.28	0.58
0500.225.0425	5.00	127	2.25	57	425	7.59	74	2.15	55	2.85	72	1,212	5,391	1.67	0.76
0500.225.0450	5.00	127	2.25	57	450	8.04	79	2.15	55	2.85	72	1,284	5,711	1.49	0.68
0500.225.0500	5.00	127	2.25	57	500	8.93	88	2.09	53	2.91	74	1,456	6,477	1.39	0.63
0500.225.0525	5.00	127	2.25	57	525	9.38	92	2.18	55	2.82	72	1,481	6,588	1.48	0.67
0500.225.0550	5.00	127	2.25	57	550	9.82	96	2.12	54	2.88	73	1,585	7,050	1.43	0.65
0500.225.0600	5.00	127	2.25	57	600	10.71	105	2.17	55	2.83	72	1,699	7,557	1.52	0.69
0500.225.0625	5.00	127	2.25	57	625	11.16	109	2.29	58	2.71	69	1,697	7,549	1.64	0.74
0500.225.0650	5.00	127	2.25	57	650	11.61	114	2.22	56	2.78	71	1,806	8,033	1.59	0.72
0500.225.0675	5.00	127	2.25	57	675	12.05	118	2.34	59	2.66	68	1,796	7,989	1.73	0.78
0500.225.0700	5.00	127	2.25	57	700	12.50	123	2.30	58	2.70	69	1,894	8,425	1.70	0.77
0500.225.0750	5.00	127	2.25	57	750	13.39	131	2.35	60	2.65	67	1,989	8,847	1.78	0.81
0500.225.0800	5.00	127	2.25	57	800	14.29	140	2.44	62	2.56	65	2,044	9,092	1.90	0.86
0500.225.0850	5.00	127	2.25	57	850	15.18	149	2.33	59	2.67	68	2,269	10,093	1.81	0.82
0500.225.0875	5.00	127	2.25	57	875	15.63	153	2.45	62	2.55	65	2,230	9,919	1.95	0.88
0500.225.0900	5.00	127	2.25	57	900	16.07	158	2.43	62	2.57	65	2,316	10,302	1.93	0.88
0500.225.0925	5.00	127	2.25	57	925	16.52	162	2.38	60	2.62	67	2,421	10,769	1.89	0.86
0500.225.0950	5.00	127	2.25	57	950	16.97	166	2.50	64	2.50	64	2,371	10,547	2.04	0.93
0500.225.1000	5.00	127	2.25	57	1,000	17.86	175	2.43	62	2.57	65	2,567	11,419	1.98	0.90
0500.225.1050	5.00	127	2.25	57	1,050	18.75	184	2.51	64	2.49	63	2,616	11,636	2.09	0.95
0500.225.1100	5.00	127	2.25	57	1,100	19.64	193	2.61	66	2.39	61	2,631	11,703	2.23	1.01
0500.225.1125	5.00	127	2.25	57	1,125	20.09	197	2.56	65	2.44	62	2,746	12,215	2.18	0.99
0500.225.1150	5.00	127	2.25	57	1,150	20.54	201	2.53	64	2.47	63	2,835	12,611	2.16	0.98



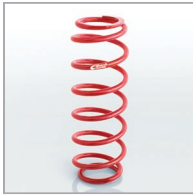
COILOVER | 2.25" I.D.

Part Number	Length		Inside Diameter		Rate			Block Height		Travel		Load at Block Height		Weight	
	inch	mm	inch	mm	lbs/inch	kg/mm	N/mm	inch	mm	inch	mm	lbs	N	lbs	kgs
0500.225.1200	5.00	127	2.25	57	1,200	21.43	210	2.64	67	2.36	60	2,837	12,620	2.31	1.05
0500.225.1250	5.00	127	2.25	57	1,250	22.32	219	2.56	65	2.44	62	3,050	13,567	2.23	1.01
0500.225.1300	5.00	127	2.25	57	1,300	23.22	228	2.64	67	2.36	60	3,073	13,669	2.35	1.07
0500.225.1350	5.00	127	2.25	57	1,350	24.11	236	2.74	70	2.26	57	3,052	13,576	2.51	1.14
0500.225.1400	5.00	127	2.25	57	1,400	25.00	245	2.69	68	2.31	59	3,238	14,403	2.45	1.11
0500.225.1450	5.00	127	2.25	57	1,450	25.89	254	2.79	71	2.21	56	3,204	14,252	2.61	1.18
0500.225.1500	5.00	127	2.25	57	1,500	26.79	263	2.74	70	2.26	57	3,394	15,097	2.56	1.16
0500.225.1525	5.00	127	2.25	57	1,525	27.23	267	2.71	69	2.29	58	3,491	15,529	2.53	1.15
0500.225.1550	5.00	127	2.25	57	1,550	27.68	271	2.84	72	2.16	55	3,344	14,875	2.72	1.23
0500.225.1600	5.00	127	2.25	57	1,600	28.57	280	2.79	71	2.21	56	3,539	15,742	2.66	1.21
0500.225.1700	5.00	127	2.25	57	1,700	30.36	298	2.84	72	2.16	55	3,674	16,343	2.77	1.26
0500.225.1750	5.00	127	2.25	57	1,750	31.25	306	2.95	75	2.05	52	3,595	15,991	2.94	1.33
0500.225.1800	5.00	127	2.25	57	1,800	32.14	315	2.89	73	2.11	54	3,799	16,899	2.89	1.31
0500.225.1850	5.00	127	2.25	57	1,850	33.04	324	2.83	72	2.17	55	4,008	17,828	2.82	1.28
0500.225.2100	5.00	127	2.25	57	2,100	37.50	368	2.92	74	2.08	53	4,361	19,399	3.26	1.48
0500.225.2400	5.00	127	2.25	57	2,400	42.86	420	3.00	76	2.00	51	4,797	21,338	3.23	1.47
0500.225.3100	5.00	127	2.25	57	3,100	55.36	543	3.25	83	1.75	44	5,430	24,154	3.85	1.75
0500.225.3400	5.00	127	2.25	57	3,400	60.72	595	3.20	81	1.80	46	6,124	27,241	3.86	1.75
0500.225.3500	5.00	127	2.25	57	3,500	62.50	613	3.28	83	1.72	44	6,021	26,783	4.02	1.82
0500.225.3600	5.00	127	2.25	57	3,600	64.29	630	3.21	82	1.79	45	6,434	28,620	3.93	1.78
0500.225.4100	5.00	127	2.25	57	4,100	73.22	718	3.24	82	1.76	45	7,222	32,125	4.10	1.86
6.00 (length in inches)															
0600.225.0125	6.00	152	2.25	57	125	2.23	22	2.01	51	3.99	101	499	2,220	0.98	0.44
0600.225.0150	6.00	152	2.25	57	150	2.68	26	2.03	52	3.97	101	596	2,651	1.03	0.47
0600.225.0175	6.00	152	2.25	57	175	3.13	31	2.16	55	3.84	98	671	2,985	1.17	0.53
0600.225.0200	6.00	152	2.25	57	200	3.57	35	2.05	52	3.95	100	788	3,503	1.12	0.51
0600.225.0225	6.00	152	2.25	57	225	4.02	39	2.27	58	3.73	95	838	3,728	1.32	0.60
0600.225.0250	6.00	152	2.25	57	250	4.46	44	2.25	57	3.75	95	937	4,168	1.40	0.64
0600.225.0275	6.00	152	2.25	57	275	4.91	48	2.40	61	3.60	91	989	4,399	1.48	0.67
0600.225.0300	6.00	152	2.25	57	300	5.36	53	2.22	56	3.78	96	1,135	5,049	1.60	0.73
0600.225.0325	6.00	152	2.25	57	325	5.80	57	2.57	65	3.43	87	1,114	4,955	1.70	0.77
0600.225.0350	6.00	152	2.25	57	350	6.25	61	2.36	60	3.64	92	1,273	5,663	1.61	0.73
0600.225.0375	6.00	152	2.25	57	375	6.70	66	2.56	65	3.44	87	1,290	5,738	1.72	0.78
0600.225.0400	6.00	152	2.25	57	400	7.14	70	2.44	62	3.56	90	1,424	6,334	1.64	0.74
0600.225.0450	6.00	152	2.25	57	450	8.04	79	2.44	62	3.56	90	1,601	7,122	1.68	0.76
New! 0600.225.0475	6.00	152	2.25	57	475	8.48	83	2.56	65	3.44	87	1,633	7,264	1.82	0.83
0600.225.0500	6.00	152	2.25	57	500	8.93	88	2.46	62	3.54	90	1,770	7,873	1.74	0.79
0600.225.0525	6.00	152	2.25	57	525	9.38	92	2.60	66	3.40	86	1,784	7,936	1.90	0.86
0600.225.0550	6.00	152	2.25	57	550	9.82	96	2.73	69	3.27	83	1,799	8,002	2.05	0.93
0600.225.0575	6.00	152	2.25	57	575	10.27	101	2.62	67	3.38	86	1,944	8,647	1.96	0.89
0600.225.0600	6.00	152	2.25	57	600	10.71	105	2.75	70	3.25	83	1,952	8,683	2.11	0.96
0600.225.0625	6.00	152	2.25	57	625	11.16	109	2.68	68	3.32	84	2,076	9,234	2.06	0.93
0600.225.0650	6.00	152	2.25	57	650	11.61	114	2.81	71	3.19	81	2,075	9,230	2.22	1.01
0600.225.0700	6.00	152	2.25	57	700	12.50	123	2.87	73	3.13	80	2,193	9,755	2.32	1.05
0600.225.0750	6.00	152	2.25	57	750	13.39	131	2.98	76	3.02	77	2,267	10,084	2.47	1.12
0600.225.0800	6.00	152	2.25	57	800	14.29	140	2.83	72	3.17	81	2,532	11,263	2.34	1.06
0600.225.0850	6.00	152	2.25	57	850	15.18	149	2.89	73	3.11	79	2,640	11,743	2.45	1.11
0600.225.0900	6.00	152	2.25	57	900	16.07	158	2.98	76	3.02	77	2,720	12,099	2.58	1.17
0600.225.0950	6.00	152	2.25	57	950	16.97	166	3.09	78	2.91	74	2,767	12,308	2.76	1.25
0600.225.1000	6.00	152	2.25	57	1,000	17.86	175	2.96	75	3.04	77	3,038	13,514	2.62	1.19
0600.225.1100	6.00	152	2.25	57	1,100	19.64	193	3.18	81	2.82	72	3,099	13,785	2.95	1.34
0600.225.1200	6.00	152	2.25	57	1,200	21.43	210	3.19	81	2.81	71	3,373	15,004	3.04	1.38
0600.225.1300	6.00	152	2.25	57	1,300	23.22	228	3.19	81	2.81	71	3,648	16,227	3.11	1.41
0600.225.1400	6.00	152	2.25	57	1,400	25.00	245	3.28	83	2.72	69	3,805	16,925	3.48	1.58



COILOVER | 2.25" I.D.

Part Number	Length		Inside Diameter		Rate			Block Height		Travel		Load at Block Height		Weight	
	inch	mm	inch	mm	lbs/inch	kg/mm	N/mm	inch	mm	inch	mm	lbs	N	lbs	kgs
0600.225.1450	6.00	152	2.25	57	1,450	25.89	254	3.34	85	2.66	68	3,859	17,166	3.37	1.53
0600.225.1500	6.00	152	2.25	57	1,500	26.79	263	3.34	85	2.66	68	3,990	17,748	3.61	1.64
0600.225.1600	6.00	152	2.25	57	1,600	28.57	280	3.34	85	2.66	68	4,257	18,936	3.68	1.67
0600.225.1800	6.00	152	2.25	57	1,800	32.14	315	3.45	88	2.55	65	4,585	20,395	3.96	1.80
0600.225.2000	6.00	152	2.25	57	2,000	35.72	350	3.54	90	2.46	62	4,882	21,716	3.95	1.79
0600.225.2200	6.00	152	2.25	57	2,200	39.29	385	3.69	94	2.31	59	5,092	22,650	4.28	1.94
7.00 (length in inches)															
0700.225.0200	7.00	178	2.25	57	200	3.57	35	2.44	62	4.57	116	914	4,066	1.48	0.67
0700.225.0225	7.00	178	2.25	57	225	4.02	39	2.56	65	4.44	113	999	4,444	1.54	0.70
0700.225.0250	7.00	178	2.25	57	250	4.46	44	2.49	63	4.51	115	1,126	5,009	1.61	0.73
0700.225.0275	7.00	178	2.25	57	275	4.91	48	2.64	67	4.36	111	1,199	5,335	1.70	0.77
0700.225.0300	7.00	178	2.25	57	300	5.36	53	2.68	68	4.32	110	1,299	5,779	1.83	0.83
0700.225.0325	7.00	178	2.25	57	325	5.80	57	2.95	75	4.05	103	1,315	5,849	2.02	0.92
0700.225.0350	7.00	178	2.25	57	350	6.25	61	2.68	68	4.32	110	1,513	6,730	1.81	0.82
0700.225.0375	7.00	178	2.25	57	375	6.70	66	2.78	71	4.22	107	1,581	7,033	1.94	0.88
0700.225.0400	7.00	178	2.25	57	400	7.14	70	2.89	73	4.11	104	1,642	7,304	2.08	0.94
0700.225.0425	7.00	178	2.25	57	425	7.59	74	3.05	77	3.95	100	1,680	7,473	2.26	1.03
0700.225.0450	7.00	178	2.25	57	450	8.04	79	2.90	74	4.10	104	1,845	8,207	2.14	0.97
0700.225.0475	7.00	178	2.25	57	475	8.48	83	3.03	77	3.97	101	1,885	8,385	2.30	1.04
0700.225.0500	7.00	178	2.25	57	500	8.93	88	3.14	80	3.86	98	1,927	8,572	2.45	1.11
0700.225.0525	7.00	178	2.25	57	525	9.38	92	3.03	77	3.97	101	2,083	9,266	2.36	1.07
0700.225.0550	7.00	178	2.25	57	550	9.82	96	3.17	81	3.83	97	2,106	9,368	2.53	1.15
0700.225.0600	7.00	178	2.25	57	600	10.71	105	3.24	82	3.76	96	2,257	10,040	2.65	1.20
0700.225.0650	7.00	178	2.25	57	650	11.61	114	3.31	84	3.69	94	2,400	10,676	2.78	1.26
0700.225.0700	7.00	178	2.25	57	700	12.50	123	3.38	86	3.62	92	2,536	11,281	2.90	1.32
0700.225.0750	7.00	178	2.25	57	750	13.39	131	3.43	87	3.57	91	2,687	11,953	3.02	1.37
0700.225.0800	7.00	178	2.25	57	800	14.29	140	3.49	89	3.51	89	2,809	12,495	3.15	1.43
0700.225.0850	7.00	178	2.25	57	850	15.18	149	3.56	90	3.44	87	2,926	13,015	3.28	1.49
0700.225.0900	7.00	178	2.25	57	900	16.07	158	3.43	87	3.57	91	3,213	14,292	3.15	1.43
0700.225.1000	7.00	178	2.25	57	1,000	17.86	175	3.64	92	3.36	85	3,359	14,942	3.50	1.59
0700.225.1100	7.00	178	2.25	57	1,100	19.64	193	3.63	92	3.37	86	3,710	16,503	3.57	1.62
8.00 (length in inches)															
0800.225.0150	8.00	203	2.25	57	150	2.68	26	2.72	69	2.72	134	791	3,520	1.61	0.73
0800.225.0200	8.00	203	2.25	57	200	3.57	35	2.95	75	5.05	128	1,010	4,493	1.95	0.88
0800.225.0225	8.00	203	2.25	57	225	4.02	39	3.10	79	4.90	124	1,102	4,902	2.02	0.92
0800.225.0250	8.00	203	2.25	57	250	4.46	44	3.09	78	4.91	125	1,227	5,458	2.13	0.97
0800.225.0275	8.00	203	2.25	57	275	4.91	48	3.25	83	4.75	121	1,307	5,814	2.24	1.02
0800.225.0300	8.00	203	2.25	57	300	5.36	53	3.03	77	4.97	126	1,490	6,628	2.07	0.94
0800.225.0325	8.00	203	2.25	57	325	5.80	57	3.13	80	4.87	124	1,584	7,046	2.20	1.00
0800.225.0350	8.00	203	2.25	57	350	6.25	61	3.22	82	4.78	121	1,671	7,433	2.34	1.06
0800.225.0375	8.00	203	2.25	57	375	6.70	66	3.30	84	4.70	119	1,762	7,838	2.47	1.12
0800.225.0400	8.00	203	2.25	57	400	7.14	70	3.46	88	4.54	115	1,814	8,069	2.66	1.21
0800.225.0425	8.00	203	2.25	57	425	7.59	74	3.59	91	4.41	112	1,875	8,340	2.82	1.28
0800.225.0450	8.00	203	2.25	57	450	8.04	79	3.43	87	4.57	116	2,055	9,141	2.69	1.22
0800.225.0475	8.00	203	2.25	57	475	8.48	83	3.58	91	4.42	112	2,101	9,346	2.89	1.31
0800.225.0500	8.00	203	2.25	57	500	8.93	88	3.44	87	4.56	116	2,279	10,137	2.78	1.26
0800.225.0525	8.00	203	2.25	57	525	9.38	92	3.59	91	4.41	112	2,318	10,311	2.95	1.34
0800.225.0550	8.00	203	2.25	57	550	9.82	96	3.73	95	4.27	108	2,347	10,440	3.16	1.43
0800.225.0600	8.00	203	2.25	57	600	10.71	105	3.76	96	4.24	108	2,543	11,312	3.26	1.48
0800.225.0650	8.00	203	2.25	57	650	11.61	114	3.81	97	4.19	106	2,721	12,104	3.39	1.54
0800.225.0700	8.00	203	2.25	57	700	12.50	123	3.92	100	4.08	104	2,859	12,717	3.57	1.62
0800.225.0750	8.00	203	2.25	57	750	13.39	131	3.94	100	4.06	103	3,044	13,540	3.66	1.66
0800.225.0800	8.00	203	2.25	57	800	14.29	140	4.04	103	3.96	101	3,165	14,079	3.86	1.75
0800.225.0850	8.00	203	2.25	57	850	15.18	149	4.12	105	3.88	99	3,299	14,675	4.01	1.82



XT BARREL | 2.50" I.D. Extreme Travel

Part Number	Length		Inside Diameter		Rate			Block Height		Travel		Load at Block Height		Weight	
	inch	mm	inch	mm	lbs/inch	kg/mm	N/mm	inch	mm	inch	mm	lbs	N	lbs	kgs
4.00 (length in inches) XT Barrel (Extreme Travel)															
New!0400.2530.0300	4.00	102	2.50	64	300	5.36	53	1.38	35	2.62	67	785	3,493	0.96	0.44
New!0400.2530.0400	4.00	102	2.50	64	400	7.14	70	1.50	38	2.48	63	1,001	4,454	1.15	0.52
New!0400.2530.0500	4.00	102	2.50	64	500	8.93	88	1.65	42	2.32	59	1,173	5,219	1.37	0.62
New!0400.2530.0600	4.00	102	2.50	64	600	10.71	105	1.57	40	2.36	60	1,435	6,384	1.34	0.61
New!0400.2530.0700	4.00	102	2.50	64	700	12.50	123	1.69	43	2.32	59	1,622	7,214	1.50	0.68
New!0400.2530.0800	4.00	102	2.50	64	800	14.28	140	1.65	42	2.32	59	1,860	8,274	1.52	0.69
6.00 (length in inches) XT Barrel (Extreme Travel)															
New!0600.2530.0200	6.00	152	2.50	64	200	3.54	35	1.97	50	4.02	102	807	3,588	1.28	0.58
New!0600.2530.0250	6.00	152	2.50	64	250	4.46	44	2.00	51	4.00	102	1,001	4,452	1.58	0.72
New!0600.2530.0300	6.00	152	2.50	64	300	5.36	53	1.93	49	4.06	103	1,221	5,433	1.52	0.71
New!0600.2530.0350	6.00	152	2.50	64	350	6.25	61	1.90	48	4.10	104	1,436	6,389	1.56	0.71
New!0600.2530.0400	6.00	152	2.50	64	400	7.14	70	2.40	61	3.60	92	1,441	6,408	1.57	0.84
New!0600.2530.0450	6.00	152	2.50	64	450	8.04	79	2.20	56	3.82	97	1,716	7,633	1.90	0.86
New!0600.2530.0500	6.00	152	2.50	64	500	8.93	88	2.24	57	3.74	95	1,882	8,371	1.98	0.90
New!0600.2530.0550	6.00	152	2.50	64	550	9.82	96	2.28	58	3.70	94	2,042	9,085	2.07	0.94
New!0600.2530.0600	6.00	152	2.50	64	600	10.71	105	2.36	60	3.62	92	2,184	9,717	2.18	0.99
New!0600.2530.0650	6.00	152	2.50	64	650	11.61	114	2.40	61	3.58	91	2,334	10,382	2.27	1.03
New!0600.2530.0700	6.00	152	2.50	64	700	12.50	123	2.52	64	3.50	89	2,445	10,874	2.40	1.09
New!0600.2530.0750	6.00	152	2.50	64	750	13.39	131	2.60	66	3.43	87	2,562	11,398	2.51	1.14
New!0600.2530.0800	6.00	152	2.50	64	800	14.29	140	2.68	68	3.35	85	2,672	11,885	2.65	1.20
New!0600.2530.0850	6.00	152	2.50	64	850	15.18	149	2.76	70	3.23	82	2,751	12,236	2.80	1.27
New!0600.2530.0900	6.00	152	2.50	64	900	16.07	158	2.68	68	3.35	85	3,005	13,366	2.67	1.21
7.00 (length in inches) XT Barrel (Extreme Travel)															
New!0700.2530.0450	7.00	178	2.50	64	450	8.04	79	2.60	66	4.40	112	1,983	8,826	2.52	1.16
New!0700.2530.0500	7.00	178	2.50	64	500	8.93	88	2.60	66	4.40	112	2,200	9,788	2.57	1.18
New!0700.2530.0550	7.00	178	2.50	64	550	9.82	96	2.76	70	4.24	108	2,333	10,382	2.87	1.32
New!0700.2530.0600	7.00	178	2.50	64	600	10.71	105	2.80	71	4.20	107	2,512	11,178	3.00	1.38
New!0700.2530.0650	7.00	178	2.50	64	650	11.61	114	2.83	72	4.17	106	2,719	12,099	3.07	1.41
New!0700.2530.0700	7.00	178	2.50	64	700	12.50	123	2.87	73	4.13	105	2,890	12,861	3.20	1.47
8.00 (length in inches) XT Barrel (Extreme Travel)															
New!0800.2530.0225	8.00	203	2.50	64	225	4.02	39	2.58	66	5.41	137	1,217	5,414	2.21	1.00
New!0800.2530.0250	8.00	203	2.50	64	250	4.46	44	2.60	66	5.39	137	1,347	5,991	2.29	1.04
New!0800.2530.0275	8.00	203	2.50	64	275	4.91	48	2.64	67	5.35	136	1,470	6,539	2.38	1.08
New!0800.2530.0300	8.00	203	2.50	64	300	5.36	53	2.64	67	5.35	136	1,604	7,136	2.31	1.05
New!0800.2530.0350	8.00	203	2.50	64	350	6.25	61	2.83	72	5.16	131	1,805	8,030	2.58	1.17
New!0800.2530.0400	8.00	203	2.50	64	400	7.14	70	2.83	72	5.16	131	2,056	9,145	2.65	1.20
New!0800.2530.0450	8.00	203	2.50	64	450	8.04	79	2.94	75	5.06	128	2,276	10,126	2.58	1.39
New!0800.2530.0500	8.00	203	2.50	64	500	8.93	88	2.95	75	5.05	128	2,524	11,226	2.65	1.42
New!0800.2530.0550	8.00	203	2.50	64	550	9.82	96	3.12	79	4.88	124	2,683	11,934	3.06	1.58
New!0800.2530.0600	8.00	203	2.50	64	600	10.71	105	3.18	81	4.82	122	2,891	12,860	3.14	1.64
New!0800.2530.0650	8.00	203	2.50	64	650	11.61	114	3.24	82	4.76	121	3,027	13,465	3.48	1.71
New!0800.2530.0700	8.00	203	2.50	64	700	12.50	123	3.25	83	4.75	121	3,326	14,797	3.62	1.74
10.00 (length in inches) XT Barrel (Extreme Travel)															
1000.2530.0225	10.00	254	2.50/3.00	64/76	225	4.02	39	3.03	77	6.97	177	1,568	6,974	3.13	1.42
1000.2530.0250	10.00	254	2.50/3.00	64/76	250	4.46	44	3.03	77	6.97	177	1,742	7,749	3.20	1.45
1000.2530.0275	10.00	254	2.50/3.00	64/76	275	4.91	48	3.11	79	6.89	175	1,894	8,426	3.33	1.50
1000.2530.0300	10.00	254	2.50/3.00	64/76	300	5.36	53	3.15	80	6.85	174	2,050	9,119	3.46	1.57
1000.2530.0325	10.00	254	2.50/3.00	64/76	325	5.80	57	3.27	83	6.73	171	2,184	9,715	3.66	1.66
1000.2530.0350	10.00	254	2.50/3.00	64/76	350	6.25	61	3.39	86	6.61	168	2,311	10,280	3.86	1.75
1000.2530.0375	10.00	254	2.50/3.00	64/76	375	6.70	66	3.50	89	6.50	165	2,432	10,818	4.08	1.85
1000.2530.0400	10.00	254	2.50/3.00	64/76	400	7.14	70	3.62	92	6.38	162	2,546	11,325	4.30	1.95
1000.2530.0425	10.00	254	2.50/3.00	64/76	425	7.59	74	3.74	95	6.26	159	2,660	11,832	4.52	2.05
1000.2530.0450	10.00	254	2.50/3.00	64/76	450	8.04	79	3.94	100	6.06	154	2,728	12,135	4.80	2.18



XT BARREL | 2.50" I.D. Extreme Travel

Part Number	Length		Inside Diameter		Rate			Block Height		Travel		Load at Block Height		Weight	
	inch	mm	inch	mm	lbs/inch	kg/mm	N/mm	inch	mm	inch	mm	lbs	N	lbs	kgs
1000.2530.0475	10.00	254	2.50/3.00	64/76	475	8.48	83	3.94	100	6.06	154	2,879	12,806	4.80	2.18
1000.2530.0500	10.00	254	2.50/3.00	64/76	500	8.93	88	4.02	102	5.98	152	2,992	13,309	4.98	2.26
1000.2530.0525	10.00	254	2.50/3.00	64/76	525	9.38	92	3.78	96	6.22	158	3,260	14,502	4.41	2.34
1000.2530.0550	10.00	254	2.50/3.00	64/76	550	9.82	96	3.94	100	6.06	154	3,334	14,832	4.96	2.25
1000.2530.0575	10.00	254	2.50/3.00	64/76	575	10.27	101	4.09	104	5.91	150	3,395	15,102	5.25	2.38
1000.2530.0600	10.00	254	2.50/3.00	64/76	600	10.71	105	4.34	110	5.66	144	3,396	15,108	5.64	2.56
12.00 (length in inches) XT Barrel (Extreme Travel)															
1200.2530.0100	12.00	305	2.50/3.00	64/76	100	1.79	18	2.68	68	9.32	237	932	4,146	2.42	1.10
1200.2530.0125	12.00	305	2.50/3.00	64/76	125	2.23	22	2.83	72	9.17	233	1,146	5,098	2.67	1.21
1200.2530.0150	12.00	305	2.50/3.00	64/76	150	2.68	26	3.04	77	8.96	228	1,344	5,978	3.00	1.36
1200.2530.0175	12.00	305	2.50/3.00	64/76	175	3.13	31	3.29	84	8.71	221	1,524	6,779	3.37	1.53
1200.2530.0185	12.00	305	2.50/3.00	64/76	185	3.13	31	3.29	84	8.71	221	1,549	6,890	3.37	1.53
1200.2530.0200	12.00	305	2.50/3.00	64/76	200	3.57	35	3.28	83	8.72	221	1,744	7,758	3.42	1.55
1200.2530.0225	12.00	305	2.50/3.00	64/76	225	4.02	39	3.61	92	8.39	213	1,888	8,398	3.95	1.79
1200.2530.0250	12.00	305	2.50/3.00	64/76	250	4.46	44	3.66	93	8.34	212	2,085	9,274	4.06	1.84
1200.2530.0275	12.00	305	2.50/3.00	64/76	275	4.91	48	3.70	94	8.30	211	2,282	10,151	4.19	1.90
1200.2530.0300	12.00	305	2.50/3.00	64/76	300	5.36	53	3.78	96	8.23	209	2,463	10,955	4.37	1.98
1200.2530.0325	12.00	305	2.50/3.00	64/76	325	5.80	57	3.94	100	8.07	205	2,519	11,205	4.59	2.08
1200.2530.0350	12.00	305	2.50/3.00	64/76	350	6.25	61	4.02	102	7.99	203	2,794	12,427	4.79	2.17
1200.2530.0375	12.00	305	2.50/3.00	64/76	375	6.70	66	4.17	106	7.83	199	2,934	13,051	5.07	2.30
1200.2530.0400	12.00	305	2.50/3.00	64/76	400	7.14	70	4.31	109	7.69	195	3,077	13,687	5.31	2.41
1200.2530.0425	12.00	305	2.50/3.00	64/76	425	7.59	74	4.45	113	7.56	192	3,213	14,292	5.55	2.52
14.00 (length in inches) XT Barrel (Extreme Travel)															
1400.2530.0100	14.00	356	2.50/3.00	64/76	100	1.79	18	3.35	85	10.67	271	1,065	4,738	3.19	1.45
1400.2530.0125	14.00	356	2.50/3.00	64/76	125	2.23	22	3.49	89	10.51	267	1,313	5,840	3.46	1.57
1400.2530.0150	14.00	356	2.50/3.00	64/76	150	2.68	26	3.72	94	10.28	261	1,541	6,855	3.86	1.75
1400.2530.0175	14.00	356	2.50/3.00	64/76	175	3.13	31	4.01	102	9.99	254	1,749	7,780	4.32	1.96
1400.2530.0185	14.00	356	2.50/3.00	64/76	185	3.30	32	4.23	108	9.77	248	1,807	8,036	4.67	2.12
1400.2530.0200	14.00	356	2.50/3.00	64/76	200	3.57	35	3.98	101	10.02	255	2,004	8,914	4.36	1.98
1400.2530.0225	14.00	356	2.50/3.00	64/76	225	4.02	39	5.32	135	8.64	220	1,953	8,687	4.93	2.24
1400.2530.0250	14.00	356	2.50/3.00	64/76	250	4.46	44	4.38	111	9.62	244	2,405	10,698	5.09	2.31
New! 1400.2530.0275	14.00	356	2.50/3.00	64/76	275	4.91	48	4.84	123	9.13	232	2,512	11,176	5.88	2.67
New! 1400.2530.0300	14.00	356	2.50/3.00	64/76	300	5.36	53	4.96	126	9.06	230	2,713	12,068	6.13	2.78
16.00 (length in inches) XT Barrel (Extreme Travel)															
1600.2530.0100	16.00	406	2.50/3.00	64/76	100	1.79	18	3.75	95	12.25	311	1,225	5,447	3.68	1.67
1600.2530.0125	16.00	406	2.50/3.00	64/76	125	2.23	22	3.90	99	12.09	307	1,513	6,731	3.97	1.80
1600.2530.0150	16.00	406	2.50/3.00	64/76	150	2.68	26	5.20	132	10.79	274	1,619	7,201	4.25	1.93
1600.2530.0175	16.00	406	2.50/3.00	64/76	175	3.13	31	4.45	113	11.54	293	2,022	8,996	4.91	2.23
1600.2530.0200	16.00	406	2.50/3.00	64/76	200	3.57	35	5.29	134	10.71	272	2,142	9,526	1.29	2.82
1600.2530.0225	16.00	406	2.50/3.00	64/76	225	4.02	40	5.22	133	10.79	274	2,425	10,788	1.29	2.83
1600.2530.0250	16.00	406	2.50/3.00	64/76	250	4.46	44	5.27	134	10.75	273	2,682	11,930	1.32	2.90
Torsion Release Bearing															
TRB250			2.50	64											
Protective Spring Bags-Pair (Fits 2.50" I.D. XT Barrel Springs)															
	Qty	Spring Diameter		Spring Length											
		inch	mm	inch	mm										
ESB12.300	2	2.50-3.00	64-76	10" - 12"	254-305										
ESB14.300	2	2.50-3.00	64-76	12" - 14"	305-356										
ESB16.300	2	2.50-3.00	64-76	14" - 16"	356-406										



COILOVER | 2.50" I.D.

Part Number	Length		Inside Diameter		Rate			Block Height		Travel		Load at Block Height		Weight	
	inch	mm	inch	mm	lbs/inch	kg/mm	N/mm	inch	mm	inch	mm	lbs	N	lbs	kgs
6.00 (length in inches)															
0600.250.0400	6.00	152	2.50	64	400	7.14	70	2.40	61	3.60	91	1,439	6,401	1.85	0.84
0600.250.0450	6.00	152	2.50	64	450	8.04	79	2.39	61	3.61	92	1,624	7,224	1.90	0.86
0600.250.0500	6.00	152	2.50	64	500	8.93	88	2.38	60	3.62	92	1,809	8,047	1.92	0.87
0600.250.0550	6.00	152	2.50	64	550	9.82	96	2.44	62	3.56	90	1,960	8,718	2.03	0.92
0600.250.0600	6.00	152	2.50	64	600	10.71	105	2.68	68	3.32	84	1,990	8,852	2.35	1.07
0600.250.0650	6.00	152	2.50	64	650	11.61	114	2.69	68	3.31	84	2,149	9,559	2.42	1.10
0600.250.0700	6.00	152	2.50	64	700	12.50	123	2.57	65	3.43	87	2,397	10,662	2.29	1.04
0600.250.0750	6.00	152	2.50	64	750	13.39	131	2.65	67	3.35	85	2,510	11,165	2.42	1.10
0600.250.0800	6.00	152	2.50	64	800	14.29	140	2.71	69	3.29	84	2,634	11,717	2.53	1.15
0600.250.0850	6.00	152	2.50	64	850	15.18	149	2.79	71	3.21	82	2,732	12,152	2.67	1.21
0600.250.0900	6.00	152	2.50	64	900	16.07	158	2.87	73	3.13	80	2,820	12,544	2.82	1.28
0600.250.0950	6.00	152	2.50	64	950	16.97	166	2.92	74	3.08	78	2,924	13,007	2.93	1.33
New! 0600.250.0975	6.00	152	2.50	64	975	17.41	171	3.03	77	2.97	75	2,896	12,882	3.11	1.41
0600.250.1000	6.00	152	2.50	64	1,000	17.86	175	2.92	74	3.08	78	3,076	13,683	3.00	1.36
0600.250.1100	6.00	152	2.50	64	1,100	19.64	193	3.00	76	3.00	76	3,295	14,657	3.15	1.43
0600.250.1150	6.00	152	2.50	64	1,150	20.54	201	3.11	79	2.89	73	3,318	14,759	3.35	1.52
0600.250.1200	6.00	152	2.50	64	1,200	21.43	210	3.03	77	2.97	75	3,562	15,844	3.24	1.47
0600.250.1300	6.00	152	2.50	64	1,300	23.22	228	3.19	81	2.81	71	3,634	16,165	3.57	1.62
0600.250.1450	6.00	152	2.50	64	1,450	25.89	254	3.16	80	2.84	72	4,110	18,282	3.59	1.63
7.00 (length in inches)															
0700.250.0275	7.00	178	2.50	64	275	4.91	48	2.54	65	4.46	113	1,226	5,453	1.95	0.88
0700.250.0300	7.00	178	2.50	64	300	5.36	53	2.48	63	4.52	115	1,356	6,032	1.83	0.83
0700.250.0325	7.00	178	2.50	64	325	5.80	57	2.54	65	4.46	113	1,449	6,445	1.92	0.87
0700.250.0350	7.00	178	2.50	64	350	6.25	61	2.65	67	4.35	110	1,525	6,784	2.06	0.93
0700.250.0375	7.00	178	2.50	64	375	6.70	66	2.71	69	4.29	109	1,609	7,157	2.17	0.98
0700.250.0400	7.00	178	2.50	64	400	7.14	70	2.81	71	4.19	106	1,675	7,451	2.32	1.05
0700.250.0450	7.00	178	2.50	64	450	8.04	79	2.81	71	4.19	106	1,884	8,380	2.36	1.07
0700.250.0500	7.00	178	2.50	64	500	8.93	88	2.81	71	4.19	106	2,096	9,323	2.42	1.10
0700.250.0550	7.00	178	2.50	64	550	9.82	96	3.07	78	3.93	100	2,161	9,613	2.79	1.27
0700.250.0600	7.00	178	2.50	64	600	10.71	105	3.09	78	3.91	99	2,348	10,444	2.87	1.30
0700.250.0650	7.00	178	2.50	64	650	11.61	114	3.15	80	3.85	98	2,504	11,138	3.00	1.36
0700.250.0700	7.00	178	2.50	64	700	12.50	123	3.20	81	3.80	97	2,660	11,834	2.93	1.33
0700.250.0750	7.00	178	2.50	64	750	13.39	131	3.23	82	3.78	96	2,813	12,511	3.24	1.47
0700.250.0800	7.00	178	2.50	64	800	14.29	140	3.35	85	3.65	93	2,918	12,978	3.22	1.46
0700.250.0900	7.00	178	2.50	64	900	16.07	158	3.51	89	3.49	89	3,142	13,978	3.53	1.60
0700.250.1000	7.00	178	2.50	64	1,000	17.86	175	3.52	89	3.48	88	3,481	15,484	3.62	1.64
0700.250.1100	7.00	178	2.50	64	1,100	19.64	193	3.70	94	3.30	84	3,626	16,131	3.97	1.80
8.00 (length in inches)															
0800.250.0150	8.00	203	2.50	64	150	2.68	26	2.55	65	5.45	138	817	3,634	1.63	0.74
0800.250.0175	8.00	203	2.50	64	175	3.13	31	2.68	68	5.32	135	931	4,141	1.90	0.86
0800.250.0200	8.00	203	2.50	64	200	3.57	35	2.67	68	5.33	135	1,065	4,737	1.95	0.88
0800.250.0225	8.00	203	2.50	64	225	4.02	39	2.71	69	5.29	134	1,191	5,298	2.03	0.92
0800.250.0250	8.00	203	2.50	64	250	4.46	44	2.83	72	5.17	131	1,291	5,743	2.12	0.96
0800.250.0275	8.00	203	2.50	64	275	4.91	48	2.89	73	5.11	130	1,406	6,254	2.21	1.00
0800.250.0300	8.00	203	2.50	64	300	5.36	53	2.96	75	5.04	128	1,513	6,730	2.33	1.06
0800.250.0325	8.00	203	2.50	64	325	5.80	57	3.05	77	4.95	126	1,609	7,157	2.46	1.12
0800.250.0350	8.00	203	2.50	64	350	6.25	61	3.12	79	4.88	124	1,709	7,602	2.59	1.17
0800.250.0375	8.00	203	2.50	64	375	6.70	66	3.23	82	4.77	121	1,787	7,949	2.76	1.25
0800.250.0400	8.00	203	2.50	64	400	7.14	70	3.08	78	4.92	125	1,968	8,754	2.61	1.18
0800.250.0425	8.00	203	2.50	64	425	7.59	74	3.17	81	4.83	123	2,053	9,132	2.76	1.25
0800.250.0450	8.00	203	2.50	64	450	8.04	79	3.28	83	4.72	120	2,122	9,439	2.94	1.33
0800.250.0475	8.00	203	2.50	64	475	8.48	83	3.40	86	4.60	117	2,184	9,715	3.12	1.42
0800.250.0500	8.00	203	2.50	64	500	8.93	88	3.28	83	4.72	120	2,358	10,489	3.00	1.36



COILOVER | 2.50" I.D.

Part Number	Length		Inside Diameter		Rate			Block Height		Travel		Load at Block Height		Weight	
	inch	mm	inch	mm	lbs/inch	kg/mm	N/mm	inch	mm	inch	mm	lbs	N	lbs	kgs
0800.250.0525	8.00	203	2.50	64	525	9.38	92	3.42	87	4.58	116	2,402	10,685	3.22	1.46
0800.250.0550	8.00	203	2.50	64	550	9.82	96	3.57	91	4.43	113	2,437	10,840	3.44	1.56
0800.250.0600	8.00	203	2.50	64	600	10.71	105	3.59	91	4.41	112	2,646	11,770	3.53	1.60
0800.250.0650	8.00	203	2.50	64	650	11.61	114	3.63	92	4.37	111	2,838	12,624	3.66	1.66
0800.250.0700	8.00	203	2.50	64	700	12.50	123	3.65	93	4.35	110	3,043	13,536	3.75	1.70
0800.250.0750	8.00	203	2.50	64	750	13.39	131	3.72	94	4.28	109	3,209	14,274	3.90	1.77
0800.250.0800	8.00	203	2.50	64	800	14.29	140	3.79	96	4.21	107	3,368	14,982	4.06	1.84
0800.250.0825	8.00	203	2.50	64	825	14.73	144	3.94	100	4.06	103	3,348	14,893	4.32	1.96
0800.250.0850	8.00	203	2.50	64	850	15.18	149	3.86	98	4.14	105	3,520	15,658	4.23	1.92
0800.250.0900	8.00	203	2.50	64	900	16.07	158	3.93	100	4.07	103	3,665	16,303	4.39	1.99
0800.250.0950	8.00	203	2.50	64	950	16.97	166	4.02	102	3.98	101	3,776	16,796	4.61	2.09
0800.250.1000	8.00	203	2.50	64	1,000	17.86	175	4.12	105	3.88	99	3,877	17,246	4.80	2.18
0800.250.1025	8.00	203	2.50	64	1,025	18.30	179	4.06	103	3.94	100	4,033	17,940	4.74	2.15
0800.250.1100	8.00	203	2.50	64	1,100	19.64	193	4.07	103	3.93	100	4,317	19,203	4.85	2.20
0800.250.1200	8.00	203	2.50	64	1,200	21.43	210	4.30	109	3.70	94	4,437	19,737	5.33	2.42
8.00 (length in inches) (Silver)															
0800.250.0150S	8.00	203	2.50	64	150	2.68	26	2.55	65	5.45	138	817	3,634	1.63	0.74
0800.250.0200S	8.00	203	2.50	64	200	3.57	35	2.67	68	5.33	135	1,065	4,737	1.94	0.88
0800.250.0250S	8.00	203	2.50	64	250	4.46	44	2.83	72	5.17	131	1,291	5,743	2.12	0.96
0800.250.0300S	8.00	203	2.50	64	300	5.36	53	2.96	75	5.04	128	1,513	6,730	2.34	1.06
0800.250.0350S	8.00	203	2.50	64	350	6.25	61	3.12	79	4.88	124	1,709	7,602	2.58	1.17
0800.250.0400S	8.00	203	2.50	64	400	7.14	70	3.08	78	4.92	125	1,968	8,754	2.62	1.19
0800.250.0500S	8.00	203	2.50	64	500	8.93	88	3.28	83	4.72	120	2,358	10,489	3.00	1.36
0800.250.0550S	8.00	203	2.50	64	550	9.82	96	3.57	91	4.43	113	2,437	10,840	3.44	1.56
0800.250.0600S	8.00	203	2.50	64	600	10.71	105	3.59	91	4.41	112	2,646	11,770	3.53	1.60
10.00 (length in inches)															
1000.250.0100	10.00	254	2.50	64	100	1.79	18	3.28	83	6.72	171	671	2,985	2.11	0.96
1000.250.0150	10.00	254	2.50	64	150	2.68	26	3.52	89	6.48	165	972	4,324	2.51	1.14
1000.250.0162	10.00	254	2.50	64	162	2.89	28	3.61	92	6.39	162	1,035	4,604	2.67	1.21
1000.250.0175	10.00	254	2.50	64	175	3.13	31	3.32	84	6.68	170	1,169	5,200	2.51	1.14
1000.250.0200	10.00	254	2.50	64	200	3.57	35	3.39	86	6.61	168	1,323	5,885	2.53	1.15
1000.250.0225	10.00	254	2.50	64	225	4.02	39	3.39	86	6.61	168	1,487	6,614	2.62	1.19
1000.250.0250	10.00	254	2.50	64	250	4.46	44	3.72	94	6.28	160	1,569	6,979	3.06	1.39
1000.250.0275	10.00	254	2.50	64	275	4.91	48	3.77	96	6.23	158	1,715	7,629	3.17	1.44
1000.250.0300	10.00	254	2.50	64	300	5.36	53	3.85	98	6.15	156	1,844	8,202	3.33	1.51
1000.250.0325	10.00	254	2.50	64	325	5.80	57	3.94	100	6.06	154	1,971	8,767	3.49	1.58
1000.250.0350	10.00	254	2.50	64	350	6.25	61	4.02	102	5.98	152	2,092	9,306	3.66	1.66
1000.250.0375	10.00	254	2.50	64	375	6.70	66	4.11	104	5.89	150	2,208	9,822	3.83	1.74
1000.250.0400	10.00	254	2.50	64	400	7.14	70	4.24	108	5.76	146	2,302	10,240	4.05	1.84
1000.250.0425	10.00	254	2.50	64	425	7.59	74	4.36	111	5.64	143	2,399	10,671	4.25	1.93
1000.250.0450	10.00	254	2.50	64	450	8.04	79	4.16	106	5.84	148	2,630	11,699	4.03	1.83
1000.250.0475	10.00	254	2.50	64	475	8.48	83	4.29	109	4.53	115	2,711	12,060	4.27	1.94
1000.250.0500	10.00	254	2.50	64	500	8.93	88	4.43	113	5.57	141	2,786	12,393	4.52	2.05
1000.250.0525	10.00	254	2.50	64	525	9.38	92	4.59	117	5.41	137	2,840	12,633	4.80	2.18
1000.250.0550	10.00	254	2.50	64	550	9.82	96	4.43	113	5.57	141	3,061	13,616	4.63	2.10
1000.250.0575	10.00	254	2.50	64	575	10.27	101	4.57	116	5.43	138	3,121	13,883	4.87	2.21
1000.250.0600	10.00	254	2.50	64	600	10.71	105	4.74	120	5.26	134	3,158	14,047	5.18	2.35
1000.250.0650	10.00	254	2.50	64	650	11.61	114	4.77	121	5.23	133	3,401	15,128	5.31	2.41
1000.250.0700	10.00	254	2.50	64	700	12.50	123	4.80	122	5.20	132	3,644	16,209	5.44	2.47
1000.250.0750	10.00	254	2.50	64	750	13.39	131	4.85	123	5.15	131	3,860	17,170	5.62	2.55
1000.250.0800	10.00	254	2.50	64	800	14.29	140	4.91	125	5.09	129	4,074	18,122	5.80	2.63
10.00 (length in inches) (Silver)															
1000.250.0100S	10.00	254	2.50	64	100	1.79	18	3.28	83	6.72	171	671	2,985	2.12	0.96
1000.250.0150S	10.00	254	2.50	64	150	2.68	26	3.52	89	6.48	165	972	4,324	2.51	1.14



COILOVER | 2.50" I.D.

Part Number	Length		Inside Diameter		Rate			Block Height		Travel		Load at Block Height		Weight	
	inch	mm	inch	mm	lbs/inch	kg/mm	N/mm	inch	mm	inch	mm	lbs	N	lbs	kgs
1000.250.0175S	10.00	254	2.50	64	175	3.13	31	3.32	84	6.68	170	1,169	5,200	2.51	1.14
1000.250.0200S	10.00	254	2.50	64	200	3.57	35	3.39	86	6.61	168	1,323	5,885	2.53	1.15
1000.250.0225S	10.00	254	2.50	64	225	4.02	39	3.39	86	6.61	168	1,487	6,614	2.62	1.19
1000.250.0250S	10.00	254	2.50	64	250	4.46	44	3.72	94	6.28	160	1,569	6,979	3.06	1.39
1000.250.0275S	10.00	254	2.50	64	275	4.91	48	3.77	96	6.23	158	1,715	7,629	3.17	1.44
1000.250.0300S	10.00	254	2.50	64	300	5.36	53	3.85	98	6.15	156	1,844	8,202	3.33	1.51
1000.250.0325S	10.00	254	2.50	64	325	5.80	57	3.94	100	6.06	154	1,971	8,767	3.48	1.58
1000.250.0350S	10.00	254	2.50	64	350	6.25	61	4.02	102	5.98	152	2,092	9,306	3.66	1.66
1000.250.0375S	10.00	254	2.50	64	375	6.70	66	4.11	104	5.89	150	2,208	9,822	3.83	1.74
1000.250.0400S	10.00	254	2.50	64	400	7.14	70	4.24	108	5.76	146	2,302	10,240	4.06	1.84
1000.250.0425S	10.00	254	2.50	64	425	7.59	74	4.36	111	5.64	143	2,399	10,671	4.25	1.93
1000.250.0450S	10.00	254	2.50	64	450	8.04	79	4.16	106	5.84	148	2,630	11,699	4.03	1.83
1000.250.0500S	10.00	254	2.50	64	500	8.93	88	4.43	113	5.57	141	2,786	12,393	4.52	2.05
1000.250.0550S	10.00	254	2.50	64	550	9.82	96	4.43	113	5.57	141	3,061	13,616	4.63	2.10
1000.250.0600S	10.00	254	2.50	64	600	10.71	105	4.74	120	5.26	134	3,158	14,047	5.18	2.35
1000.250.0650S	10.00	254	2.50	64	650	11.61	114	4.77	121	5.23	133	3,401	15,128	5.31	2.41
1000.250.0700S	10.00	254	2.50	64	700	12.50	123	4.80	122	5.20	132	3,644	16,209	5.44	2.47
1000.250.0750S	10.00	254	2.50	64	750	13.39	131	4.85	123	5.15	131	3,860	17,170	5.62	2.55
1000.250.0800S	10.00	254	2.50	64	800	14.29	140	4.91	125	5.09	129	4,074	18,122	5.80	2.63
12.00 (length in inches)															
1200.250.0080	12.00	305	2.50	64	80	1.43	14	3.58	91	8.43	214	674	2,999	2.25	1.02
1200.250.0090	12.00	305	2.50	64	90	1.61	16	3.82	97	8.18	208	736	3,274	2.51	1.14
1200.250.0100	12.00	305	2.50	64	100	1.79	18	3.51	89	8.49	216	849	3,777	2.31	1.05
1200.250.0110	12.00	305	2.50	64	110	1.96	19	3.53	90	8.47	215	932	4,146	2.45	1.11
1200.250.0120	12.00	305	2.50	64	120	2.14	21	3.66	93	8.34	212	1,001	4,453	2.62	1.19
1200.250.0125	12.00	305	2.50	64	125	2.23	22	3.95	100	8.05	204	1,007	4,479	2.92	1.32
1200.250.0130	12.00	305	2.50	64	130	2.32	23	4.38	111	7.62	194	991	4,408	3.26	1.48
1200.250.0140	12.00	305	2.50	64	140	2.50	25	4.01	102	7.99	203	1,118	4,973	3.05	1.38
1200.250.0150	12.00	305	2.50	64	150	2.68	26	4.19	106	7.81	198	1,171	5,209	3.29	1.49
1200.250.0165	12.00	305	2.50	64	165	2.95	29	3.94	100	8.06	205	1,330	5,916	3.00	1.36
1200.250.0175	12.00	305	2.50	64	175	3.13	31	4.16	106	7.84	199	1,372	6,103	3.26	1.48
1200.250.0185	12.00	305	2.50	64	185	3.30	32	3.95	100	8.05	204	1,488	6,619	3.11	1.41
1200.250.0200	12.00	305	2.50	64	200	3.57	35	4.07	103	7.93	201	1,585	7,050	3.28	1.49
1200.250.0225	12.00	305	2.50	64	225	4.02	39	4.46	113	7.54	192	1,696	7,544	3.80	1.72
1200.250.0250	12.00	305	2.50	64	250	4.46	44	4.43	113	7.57	192	1,893	8,420	3.86	1.75
1200.250.0275	12.00	305	2.50	64	275	4.91	48	4.48	114	7.52	191	2,067	9,194	4.01	1.82
1200.250.0300	12.00	305	2.50	64	300	5.36	53	4.96	126	7.04	179	2,112	9,395	4.67	2.12
1200.250.0325	12.00	305	2.50	64	325	5.80	57	5.02	128	6.98	177	2,270	10,097	4.84	2.20
1200.250.0350	12.00	305	2.50	64	350	6.25	61	5.12	130	6.88	175	2,408	10,711	5.05	2.29
1200.250.0375	12.00	305	2.50	64	375	6.70	66	5.22	133	6.78	172	2,542	11,307	5.27	2.39
1200.250.0400	12.00	305	2.50	64	400	7.14	70	5.32	135	6.68	170	2,670	11,877	5.51	2.50
1200.250.0425	12.00	305	2.50	64	425	7.59	74	5.43	138	6.57	167	2,794	12,428	5.73	2.60
1200.250.0450	12.00	305	2.50	64	450	8.04	79	5.22	133	6.78	172	3,052	13,576	5.51	2.50
1200.250.0475	12.00	305	2.50	64	475	8.48	83	5.34	136	6.66	169	3,162	14,065	5.75	2.61
1200.250.0525	12.00	305	2.50	64	525	9.38	92	5.65	144	6.35	161	3,334	14,830	6.37	2.89
1200.250.0600	12.00	305	2.50	64	600	10.71	105	5.82	148	6.18	157	3,706	16,485	6.83	3.10
1200.250.0625	12.00	305	2.50	64	625	11.16	109	5.62	143	6.38	162	3,985	17,726	6.59	2.99
1200.250.0800	12.00	305	2.50	64	800	14.29	140	5.92	150	6.08	154	4,864	21,636	7.49	3.40
12.00 (length in inches) (Silver)															
1200.250.0100S	12.00	305	2.50	64	100	1.79	18	3.51	89	8.49	216	849	3,777	2.31	1.05
1200.250.0125S	12.00	305	2.50	64	125	2.23	22	3.95	100	8.05	204	1,007	4,479	2.91	1.32
1200.250.0150S	12.00	305	2.50	64	150	2.68	26	4.19	106	7.81	198	1,171	5,209	3.28	1.49
1200.250.0175S	12.00	305	2.50	64	175	3.13	31	4.16	106	7.84	199	1,372	6,103	3.26	1.48
1200.250.0200S	12.00	305	2.50	64	200	3.57	35	4.07	103	7.93	201	1,585	7,050	3.28	1.49



COILOVER | 2.50" I.D.

Part Number	Length		Inside Diameter		Rate			Block Height		Travel		Load at Block Height		Weight	
	inch	mm	inch	mm	lbs/inch	kg/mm	N/mm	inch	mm	inch	mm	lbs	N	lbs	kgs
1200.250.0225S	12.00	305	2.50	64	225	4.02	39	4.46	113	7.54	192	1,696	7,544	3.79	1.72
1200.250.0250S	12.00	305	2.50	64	250	4.46	44	4.43	113	7.57	192	1,893	8,420	3.86	1.75
1200.250.0275S	12.00	305	2.50	64	275	4.91	48	4.48	114	7.52	191	2,067	9,194	4.01	1.82
1200.250.0300S	12.00	305	2.50	64	300	5.36	53	4.96	126	7.04	179	2,112	9,395	4.67	2.12
1200.250.0325S	12.00	305	2.50	64	325	5.80	57	5.02	128	6.98	177	2,270	10,097	4.83	2.19
1200.250.0350S	12.00	305	2.50	64	350	6.25	61	5.12	130	6.88	175	2,408	10,711	5.05	2.29
1200.250.0375S	12.00	305	2.50	64	375	6.70	66	5.22	133	6.78	172	2,542	11,307	5.27	2.39
1200.250.0400S	12.00	305	2.50	64	400	7.14	70	5.32	135	6.68	170	2,670	11,877	5.51	2.50
1200.250.0425S	12.00	305	2.50	64	425	7.59	74	5.43	138	6.57	167	2,794	12,428	5.73	2.60
1200.250.0450S	12.00	305	2.50	64	450	8.04	79	5.22	133	6.78	172	3,052	13,576	5.51	2.50
1200.250.0475S	12.00	305	2.50	64	475	8.48	83	5.34	136	6.66	169	3,162	14,065	5.75	2.61
1200.250.0500S	12.00	305	2.50	64	500	8.93	88	5.49	139	6.51	165	3,252	14,466	6.06	2.75
1200.250.0525S	12.00	305	2.50	64	525	9.38	92	5.65	144	6.35	161	3,334	14,830	6.37	2.89
1200.250.0550S	12.00	305	2.50	64	550	9.82	96	5.83	148	6.17	157	3,390	15,079	6.72	3.05
1200.250.0600S	12.00	305	2.50	64	600	10.71	105	5.82	148	6.18	157	3,706	16,485	6.83	3.10
1200.250.0650S	12.00	305	2.50	64	650	11.61	114	5.81	148	6.19	157	4,025	17,904	6.94	3.15
1200.250.0700S	12.00	305	2.50	64	700	12.50	123	5.85	149	6.15	156	4,307	19,158	7.12	3.23
1200.250.0750S	12.00	305	2.50	64	750	13.39	131	5.88	149	6.12	155	4,586	20,399	7.32	3.32
1200.250.0800S	12.00	305	2.50	64	800	14.29	140	5.92	150	6.08	154	4,864	21,636	7.49	3.40
1200.250.0900S	12.00	305	2.50	64	900	16.07	158	6.40	163	5.60	142	5,041	22,423	8.60	3.90
14.00 (length in inches)															
1400.250.0080	14.00	356	2.50	64	80	1.43	14	3.93	100	10.07	256	806	3,585	2.56	1.16
1400.250.0090	14.00	356	2.50	64	90	1.61	16	4.81	122	9.19	233	827	3,679	3.39	1.54
1400.250.0095	14.00	356	2.50	64	95	1.70	17	4.59	117	9.41	239	894	3,977	3.24	1.47
1400.250.0100	14.00	356	2.50	64	100	1.79	18	4.39	112	9.61	244	961	4,275	3.09	1.40
1400.250.0110	14.00	356	2.50	64	110	1.96	19	5.03	128	8.97	228	987	4,390	3.77	1.71
1400.250.0120	14.00	356	2.50	64	120	2.14	21	4.55	116	9.45	240	1,134	5,044	3.48	1.58
1400.250.0130	14.00	356	2.50	64	130	2.32	23	4.84	123	9.16	233	1,190	5,293	3.72	1.69
1400.250.0140	14.00	356	2.50	64	140	2.50	25	4.53	115	9.47	241	1,326	5,898	3.48	1.58
1400.250.0150	14.00	356	2.50	64	150	2.68	26	4.72	120	9.28	236	1,391	6,187	3.72	1.69
1400.250.0165	14.00	356	2.50	64	165	2.95	29	4.80	122	9.20	234	1,518	6,752	3.90	1.77
1400.250.0175	14.00	356	2.50	64	175	3.13	31	5.04	128	8.96	228	1,568	6,975	4.21	1.91
1400.250.0185	14.00	356	2.50	64	185	3.30	32	4.76	121	9.24	235	1,709	7,602	3.99	1.81
1400.250.0200	14.00	356	2.50	64	200	3.57	35	4.92	125	9.08	231	1,817	8,082	4.21	1.91
1400.250.0225	14.00	356	2.50	64	225	4.02	39	5.32	135	8.68	220	1,953	8,687	4.80	2.18
1400.250.0250	14.00	356	2.50	64	250	4.46	44	5.32	135	8.68	220	2,170	9,653	4.91	2.23
1400.250.0275	14.00	356	2.50	64	275	4.91	48	5.79	147	8.21	209	2,258	10,044	5.62	2.55
1400.250.0300	14.00	356	2.50	64	300	5.36	53	5.81	148	8.19	208	2,458	10,934	5.77	2.62
1400.250.0325	14.00	356	2.50	64	325	5.80	57	5.90	150	8.10	206	2,633	11,712	5.99	2.72
1400.250.0350	14.00	356	2.50	64	350	6.25	61	5.96	151	8.04	204	2,812	12,508	6.19	2.81
1400.250.0400	14.00	356	2.50	64	400	7.14	70	6.19	157	7.81	198	3,123	13,892	6.72	3.05
1400.250.0450	14.00	356	2.50	64	450	8.04	79	6.48	165	7.52	191	3,385	15,057	7.34	3.33
1400.250.0500	14.00	356	2.50	64	500	8.93	88	6.34	161	7.66	195	3,830	17,037	7.34	3.33
14.00 (length in inches) (Silver)															
1400.250.0100S	14.00	356	2.50	64	100	1.79	18	4.39	112	9.61	244	961	4,275	3.09	1.40
1400.250.0125S	14.00	356	2.50	64	125	2.23	22	5.00	127	9.00	229	1,125	5,004	3.86	1.75
1400.250.0150S	14.00	356	2.50	64	150	2.68	26	4.72	120	9.28	236	1,391	6,187	3.72	1.69
1400.250.0175S	14.00	356	2.50	64	175	3.13	31	5.04	128	8.96	228	1,568	6,975	4.21	1.91
1400.250.0185S	14.00	356	2.50	64	185	3.30	32	4.78	121	9.22	234	1,705	7,584	3.99	1.81
1400.250.0200S	14.00	356	2.50	64	200	3.57	35	4.92	125	9.08	231	1,817	8,082	4.21	1.91
1400.250.0225S	14.00	356	2.50	64	225	4.02	39	5.32	135	8.68	220	1,953	8,687	4.80	2.18
1400.250.0250S	14.00	356	2.50	64	250	4.46	44	5.32	135	8.68	220	2,170	9,653	4.91	2.23
1400.250.0275S	14.00	356	2.50	64	275	4.91	48	5.79	147	8.21	209	2,258	10,044	5.62	2.55
1400.250.0300S	14.00	356	2.50	64	300	5.36	53	5.81	148	8.19	208	2,458	10,934	5.77	2.62



COILOVER | 2.50" I.D.

Part Number	Length		Inside Diameter		Rate			Block Height		Travel		Load at Block Height		Weight	
	inch	mm	inch	mm	lbs/inch	kg/mm	N/mm	inch	mm	inch	mm	lbs	N	lbs	kgs
1400.250.0350S	14.00	356	2.50	64	350	6.25	61	5.96	151	8.04	204	2,812	12,508	6.19	2.81
1400.250.0400S	14.00	356	2.50	64	400	7.14	70	6.19	157	7.81	198	3,123	13,892	6.72	3.05
1400.250.0450S	14.00	356	2.50	64	450	8.04	79	6.48	165	7.52	191	3,385	15,057	7.34	3.33
1400.250.0500S	14.00	356	2.50	64	500	8.93	88	6.34	161	7.66	195	3,830	17,037	7.34	3.33
1400.250.0550S	14.00	356	2.50	64	550	9.82	96	6.68	170	7.32	186	4,026	17,908	8.04	3.65
1400.250.0600S	14.00	356	2.50	64	600	10.71	105	6.64	169	7.36	187	4,413	19,630	8.15	3.70
1400.250.0650S	14.00	356	2.50	64	650	11.61	114	7.02	178	6.98	177	4,538	20,186	8.97	4.07
16.00 (length in inches) (Silver)															
1600.250.0100S	16.00	406	2.50	64	100	1.79	18	4.88	124	11.10	282	1,110	4,937	3.57	1.62
1600.250.0150S	16.00	406	2.50	64	150	2.68	26	5.75	146	10.24	260	1,537	6,835	4.85	2.20
1600.250.0200S	16.00	406	2.50	64	200	3.57	35	5.89	150	10.11	257	2,023	8,999	5.33	2.42
1600.250.0250S	16.00	406	2.50	64	250	4.46	44	6.27	159	9.73	247	2,433	10,822	6.11	2.77
1600.250.0300S	16.00	406	2.50	64	300	5.36	53	6.81	173	9.19	233	2,757	12,264	7.12	3.23
1600.250.0350S	16.00	406	2.50	64	350	6.25	61	6.94	176	9.06	230	3,173	14,114	7.58	3.44
1600.250.0400S	16.00	406	2.50	64	400	7.14	70	7.17	182	8.83	224	3,533	15,715	8.18	3.71
1600.250.0450S	16.00	406	2.50	64	450	8.04	79	7.42	188	8.58	218	3,861	17,175	8.82	4.00
1600.250.0500S	16.00	406	2.50	64	500	8.93	88	7.77	197	8.23	209	4,117	18,313	9.61	4.36
1600.250.0550S	16.00	406	2.50	64	550	9.82	96	8.09	205	7.91	201	4,353	19,363	10.40	4.72
1600.250.0600S	16.00	406	2.50	64	600	10.71	105	8.06	205	7.94	202	4,763	21,187	10.58	4.80
1600.250.0650S	16.00	406	2.50	64	650	11.61	114	8.00	203	8.00	203	5,200	23,131	10.67	4.84
1600.250.0700S	16.00	406	2.50	64	700	12.50	123	8.44	214	7.56	192	5,289	23,527	11.70	5.31
1600.250.0750S	16.00	406	2.50	64	750	13.39	131	8.44	214	7.56	192	5,669	25,217	11.90	5.40
Tender/Linear															
0175.250.0150	2.64	67	2.50	64	150	2.68	26	0.89	23	1.75	44	263	1,170	0.90	0.41
0175.250.0200	3.05	78	2.54	65	200	3.57	35	1.30	33	1.75	45	350	1,558	1.48	0.67
0175.250.0250	2.79	71	2.50	64	250	4.46	44	1.04	26	1.75	44	438	1,948	1.28	0.58
0175.250.0300	3.27	83	2.50	64	300	5.36	53	2.02	51	1.75	44	525	2,335	1.92	0.87
0200.250.1300	2.01	51	2.50	64	1,300	23.22	228	1.22	31	0.79	20	947	4,212	0.81	0.37
0225.250.0150	3.90	99	2.54	65	150	2.68	26	1.65	42	2.25	57	334	1,486	1.92	0.87
0225.250.0200	3.55	90	2.54	65	200	3.57	35	1.30	33	2.25	57	450	2,000	1.48	0.67
0225.250.0250	3.94	100	2.50	64	250	4.46	44	1.69	43	2.25	57	563	2,504	2.18	0.99
0225.250.0300	3.94	100	2.50	64	300	5.36	53	1.69	43	2.25	57	675	3,003	2.23	1.01
0300.250.0200	4.92	125	2.54	65	200	3.57	35	1.93	49	2.99	76	598	2,660	2.20	1.00
Tender/Progressive															
0175.250.600-1300	3.55	90	2.50	64	600/1300	107/232	105/228	1.84	47	1.70	43	1,513	6,731	1.90	0.86
0200.250.175-550	4.25	108	2.50	64	175/550	3.13/982	31/96	2.20	56	2.05	52	739	3,287	2.42	1.10
0200.250.175-650	4.25	108	2.50	64	175/650	3.13/1161	31/114	2.20	56	2.05	52	846	3,763	2.42	1.10
0200.250.250-550	3.46	88	2.57	65	250/550	4.46/982	45/95	1.50	38	1.97	50	877	3,900	1.81	0.82
0200.250.250-650	4.84	123	2.50	64	250/650	4.46/1161	44/114	2.80	71	2.05	52	924	4,112	3.09	1.40
0200.250.360-800	4.25	108	2.57	65	360/800	6.42/1427	63/140	2.20	56	2.05	52	1,297	5,769	2.51	1.14
Helper															
HELPER250	3.03	77	2.52	64	11	0.19	2	0.50	13	2.52	64	28	126	0.30	0.12
HELPER250T	6.00	152	2.50	64	5	0.09	1	0.60	16	5.40	136	27	120	0.44	0.20
Spacer (ID locating main to helper/tender coupling spacer)															
SPACER250			2.50	64											
Adapter															
ADAPTER60-250			60/250	60/250											
Isolator (Delrin Seat Plate)															
ISOLATOR250			2.50	64											
Torsion Release Bearing															
TRB250			2.50	64											



COILOVER | 2.50" I.D.

Coil Sleeve (Fits 2.50" I.D. Springs)	Qty	Spring Diameter Range		Spring Wire Diameter Range		Coil Sleeve Length	
		inch	mm	inch	mm	inch	mm
CS3001	2	2.50-3.50	64-89	0.423-0.541	11-14	10.31	262
CS3002	2	2.50-3.50	64-89	0.551-0.650	14-17	10.31	262

Protective Spring Bags-Pair (Fits 2.50" I.D. Springs)	Qty	Spring Diameter		Spring Length	
		inch	mm	inch	mm
ESB10.250	2	2.50	64	8" - 10"	203-254
ESB12.250	2	2.50	64	10" - 12"	254-305
ESB14.250	2	2.50	64	12" - 14"	305-356
ESB16.250	2	2.50	64	14" - 16"	356-406
Protective Neoprene Spring Bags-Pair (Fits 2.50" I.D. Springs)					
ESBN18.250	2	2.50	64	18" - 20"	457-508
ESBN20.250	2	2.50	64	20" - 22"	508-559
ESBN22.250	2	2.50	64	22" - 24"	559-610
ESBN26.250	2	2.50	64	26" - 28"	660-711
ESBN30.250	2	2.50	64	30" - 32"	762-813



COILOVER | 3.00" I.D (Off-Road)

Part Number	Length		Inside Diameter		Rate			Block Height		Travel		Load at Block Height		Weight	
	inch	mm	inch	mm	lbs/inch	kg/mm	N/mm	inch	mm	inch	mm	lbs	N	lbs	kgs
4.00 (length in inches) (Silver)															
0400.300.0250S	4.00	102	3.00	76	250	4.46	44	1.31	33	2.69	68	673	2,992	0.91	0.41
0400.300.0300S	4.00	102	3.00	76	300	5.36	53	1.38	35	2.62	66	785	3,491	1.03	0.46
0400.300.0350S	4.00	102	3.00	76	350	6.22	61	1.40	36	2.60	66	909	4,045	1.06	0.48
0400.300.0400S	4.00	102	3.00	76	400	7.14	70	1.52	39	2.48	63	994	4,420	1.23	0.56
0400.300.0450S	4.00	102	3.00	76	450	8.04	79	1.53	39	2.47	63	1,111	4,936	1.27	0.58
0400.300.0500S	4.00	102	3.00	76	500	8.93	88	1.46	37	2.54	65	1,272	5,657	2.20	0.54
0400.300.0550S	4.00	102	3.00	76	550	9.82	97	1.69	43	2.31	59	1,272	5,653	1.52	0.69
0400.300.0600S	4.00	102	3.00	76	600	10.71	106	1.83	47	2.17	55	1,859	8,261	1.86	0.84
6.00 (length in inches) (Silver)															
0600.300.0100S	6.00	152	3.00	76	100	1.79	18	1.31	33	4.69	119	469	2,085	0.78	0.35
0600.300.0150S	6.00	152	3.00	76	150	2.68	26	1.61	41	4.39	112	659	2,932	1.12	0.51
0600.300.0200S	6.00	152	3.00	76	200	3.57	35	1.78	45	4.24	108	843	3,750	1.37	0.62
0600.300.0250S	6.00	152	3.00	76	250	4.46	44	1.85	47	4.16	106	1,039	4,623	1.50	0.68
0600.300.0300S	6.00	152	3.00	76	300	5.36	53	1.93	49	4.06	103	1,219	5,422	1.65	0.75
0600.300.0350S	6.00	152	3.00	76	350	6.25	61	2.05	52	3.97	101	1,389	6,179	1.83	0.83
0600.300.0400S	6.00	152	3.00	76	400	7.14	70	2.20	56	3.79	96	1,514	6,735	2.12	0.96
0600.300.0450S	6.00	152	3.00	76	450	8.04	79	2.20	56	3.80	97	1,712	7,615	2.14	0.97
0600.300.0500S	6.00	152	3.00	76	500	8.93	88	2.36	60	3.64	92	1,820	8,090	2.44	1.10
0600.300.0550S	6.00	152	3.00	76	550	9.82	97	2.36	60	3.62	92	2,002	8,896	2.50	1.13
0600.300.0600S	6.00	152	3.00	76	600	10.71	106	2.41	61	3.59	91	2,155	9,576	2.61	1.18
8.00 (length in inches) (Silver)															
0800.300.0100S	8.00	203	3.00	76	100	1.79	18	2.01	51	5.99	152	599	2,664	1.69	0.77
0800.300.0150S	8.00	203	3.00	76	150	2.68	26	2.06	52	5.94	151	2,107	3,964	1.59	0.72
0800.300.0200S	8.00	203	3.00	76	200	3.57	35	2.36	60	5.64	143	1,128	5,015	2.03	0.92
0800.300.0250S	8.00	203	3.00	76	250	4.46	44	2.62	67	5.38	137	1,345	5,978	2.45	1.11
0800.300.0300S	8.00	203	3.00	76	300	5.36	53	2.66	68	5.34	136	1,604	7,128	2.63	1.19
0800.300.0350S	8.00	203	3.00	76	350	6.25	61	2.82	72	5.18	132	1,814	8,061	2.92	1.32
0800.300.0400S	8.00	203	3.00	76	400	7.14	70	2.99	76	5.01	127	1,870	8,313	3.25	1.47
0800.300.0450S	8.00	203	3.00	76	450	8.04	79	3.16	80	4.84	123	2,179	9,683	3.58	1.62



COILOVER | 3.00" I.D. (Off-Road)

Part Number	Length		Inside Diameter		Rate			Block Height		Travel		Load at Block Height		Weight	
	inch	mm	inch	mm	lbs/inch	kg/mm	N/mm	inch	mm	inch	mm	lbs	N	lbs	kgs
0800.300.0500S	8.00	203	3.00	76	500	8.93	88	3.12	79	4.88	124	2,441	10,847	3.60	1.63
0800.300.0600S	8.00	203	3.00	76	600	10.71	106	3.36	85	4.64	118	2,788	12,392	4.15	1.88
10.00 (length in inches) (Silver)															
1000.300.0100S	10.00	254	3.00	76	100	1.79	18	2.83	72	7.17	182	716	3,185	2.55	1.16
1000.300.0150S	10.00	254	3.00	76	150	2.68	26	2.91	74	7.09	180	1,063	4,728	2.54	1.15
1000.300.0200S	10.00	254	3.00	76	200	3.57	35	3.07	78	6.93	176	1,382	6,147	2.93	1.33
1000.300.0250S	10.00	254	3.00	76	250	4.46	44	3.35	85	6.65	169	1,662	7,393	3.43	1.56
1000.300.0300S	10.00	254	3.00	76	300	5.36	53	3.31	84	6.69	170	2,008	8,932	3.57	1.62
New! 1000.300.0350S	10.00	254	3.00	76	350	6.25	61	3.82	97	6.18	157	2,164	9,624	4.39	1.99
New! 1000.300.0400S	10.00	254	3.00	76	400	7.14	70	3.98	101	6.02	153	2,414	10,737	4.76	2.16
12.00 (length in inches) (Silver)															
1200.300.0100S	12.00	305	3.00	76	100	1.79	18	2.87	73	9.13	232	912	4,057	2.34	1.06
1200.300.0125S	12.00	305	3.00	76	125	2.23	22	3.35	85	8.65	220	1,079	4,800	2.98	1.35
1200.300.0150S	12.00	305	3.00	76	150	2.68	26	3.19	81	8.81	224	1,319	5,867	2.89	1.31
1200.300.0175S	12.00	305	3.00	76	175	3.13	31	3.74	95	8.26	210	1,448	6,441	3.66	1.66
1200.300.0200S	12.00	305	3.00	76	200	3.57	35	3.66	93	8.34	212	1,664	7,402	3.70	1.68
1200.300.0225S	12.00	305	3.00	76	225	4.02	39	3.94	100	8.06	205	1,815	8,073	4.17	1.89
1200.300.0250S	12.00	305	3.00	76	250	4.46	44	3.94	100	8.06	205	2,014	8,959	4.28	1.94
1200.300.0275S	12.00	305	3.00	76	275	4.91	48	4.29	109	7.71	196	2,122	9,439	4.87	2.21
1200.300.0300S	12.00	305	3.00	76	300	5.36	53	4.33	110	7.67	195	2,305	10,253	5.03	2.28
1200.300.0325S	12.00	305	3.00	76	325	5.80	57	4.37	111	7.63	194	2,486	11,058	5.16	2.34
1200.300.0350S	12.00	305	3.00	76	350	6.25	61	4.41	112	7.59	193	2,657	11,819	5.36	2.43
1200.300.0375S	12.00	305	3.00	76	375	6.70	66	4.49	114	7.51	191	2,815	12,522	5.58	2.53
1200.300.0400S	12.00	305	3.00	76	400	7.14	70	4.57	116	7.43	189	2,970	13,211	5.80	2.63
1200.300.0450S	12.00	305	3.00	76	450	8.04	79	4.76	121	7.24	184	3,254	14,474	6.28	2.85
1200.300.0500S	12.00	305	3.00	76	500	8.93	88	5.00	127	7.00	178	3,503	15,582	6.86	3.11
1200.300.0600S	12.00	305	3.00	76	600	10.71	105	5.24	133	6.76	172	4,069	18,100	7.61	3.45
14.00 (length in inches) (Silver)															
New! 1400.300.0100S	14.00	356	3.00	76	100	1.79	18	3.66	93	10.35	263	1,035	4,605	3.15	1.43
1400.300.0125S	14.00	356	3.00	76	125	2.23	22	3.98	101	10.02	255	1,254	5,578	3.77	1.71
1400.300.0150S	14.00	356	3.00	76	150	2.68	26	4.25	108	9.75	248	1,464	6,512	4.21	1.91
1400.300.0175S	14.00	356	3.00	76	175	3.13	31	4.45	113	9.55	243	1,673	7,442	4.63	2.10
1400.300.0200S	14.00	356	3.00	76	200	3.57	35	4.72	120	9.28	236	1,855	8,251	5.18	2.35
1400.300.0225S	14.00	356	3.00	76	225	4.02	39	4.65	118	9.35	237	2,103	9,355	5.20	2.36
1400.300.0250S	14.00	356	3.00	76	250	4.46	44	5.00	127	9.00	229	2,251	10,013	5.87	2.66
1400.300.0275S	14.00	356	3.00	76	275	4.91	48	4.96	126	9.04	230	2,484	11,049	5.95	2.70
1400.300.0300S	14.00	356	3.00	76	300	5.36	53	5.39	137	8.61	219	2,581	11,481	6.77	3.07
1400.300.0325S	14.00	356	3.00	76	325	5.80	57	5.24	133	8.76	223	2,843	12,646	6.79	3.08
1400.300.0350S	14.00	356	3.00	76	350	6.25	61	5.47	139	8.53	217	2,990	13,300	7.12	3.23
1400.300.0400S	14.00	356	3.00	76	400	7.14	70	5.59	142	8.41	214	3,362	14,955	7.61	3.45
1400.300.0450S	14.00	356	3.00	76	450	8.04	79	5.83	148	8.17	208	3,682	16,378	8.22	3.73
1400.300.0500S	14.00	356	3.00	76	500	8.93	88	6.02	153	7.98	203	3,979	17,699	8.89	4.03
1400.300.0550S	14.00	356	3.00	76	550	9.82	96	6.38	162	7.62	194	4,200	18,682	9.72	4.41
1400.300.0600S	14.00	356	3.00	76	600	10.71	105	6.26	159	7.74	197	4,638	20,631	9.72	4.41
1400.300.0650S	14.00	356	3.00	76	650	11.61	114	6.61	168	7.39	188	4,813	21,409	10.63	4.82
1400.300.0700S	14.00	356	3.00	76	700	12.50	123	6.57	167	7.43	189	5,198	23,121	10.73	4.87
16.00 (length in inches) (Silver)															
1600.300.0075S	16.00	406	3.00	76	75	1.34	13	3.78	96	12.22	310	916	4,075	3.09	1.40
1600.300.0100S	16.00	406	3.00	76	100	1.79	18	4.45	113	11.55	293	1,155	5,138	4.08	1.85
1600.300.0125S	16.00	406	3.00	76	125	2.23	22	4.49	114	11.51	292	1,439	6,401	4.36	1.98
1600.300.0150S	16.00	406	3.00	76	150	2.68	26	5.08	129	10.92	277	1,638	7,286	5.33	2.42
1600.300.0175S	16.00	406	3.00	76	175	3.13	31	5.31	135	10.69	272	1,869	8,314	5.82	2.64
1600.300.0200S	16.00	406	3.00	76	200	3.57	35	5.55	141	10.45	265	2,090	9,297	6.41	2.91
1600.300.0225S	16.00	406	3.00	76	225	4.02	39	5.47	139	10.53	267	2,368	10,533	6.46	2.93



COILOVER | 3.00" I.D. (Off-Road)

Part Number	Length		Inside Diameter		Rate			Block Height		Travel		Load at Block Height		Weight	
	inch	mm	inch	mm	lbs/inch	kg/mm	N/mm	inch	mm	inch	mm	lbs	N	lbs	kgs
1600.300.0250S	16.00	406	3.00	76	250	4.46	44	5.83	148	10.17	258	2,546	11,325	7.19	3.26
1600.300.0300S	16.00	406	3.00	76	300	5.36	53	6.22	158	9.78	248	2,931	13,038	8.20	3.72
1600.300.0350S	16.00	406	3.00	76	350	6.25	61	6.46	164	9.54	242	3,342	14,866	8.75	3.97
1600.300.0400S	16.00	406	3.00	76	400	7.14	70	6.61	168	9.39	239	3,754	16,699	9.33	4.23
1600.300.0450S	16.00	406	3.00	76	450	8.04	79	6.81	173	9.19	233	4,130	18,371	10.39	4.71
1600.300.0500S	16.00	406	3.00	76	500	8.93	88	7.52	191	8.48	215	4,241	18,865	11.66	5.29
1600.300.0550S	16.00	406	3.00	76	550	9.82	96	7.60	193	8.40	213	4,629	20,591	12.30	5.58
1600.300.0600S	16.00	406	3.00	76	600	10.71	105	7.72	196	8.28	210	4,978	22,143	12.59	5.71
1600.300.0700S	16.00	406	3.00	76	700	12.50	123	8.03	204	7.97	202	5,575	24,799	13.83	6.27
1600.300.0800S	16.00	406	3.00	76	800	14.29	140	8.15	207	7.85	199	6,274	27,908	14.88	6.75
18.00 (length in inches) (Silver)															
1800.300.0200S	18.00	457	3.00	76	200	3.57	35	6.34	161	11.66	296	2,330	10,364	7.81	3.54
1800.300.0300S	18.00	457	3.00	76	300	5.36	53	7.20	183	10.80	274	3,242	14,421	9.92	4.50
1800.300.0400S	18.00	457	3.00	76	400	7.14	70	7.76	197	10.24	260	4,100	18,238	11.75	5.33
1800.300.0450S	18.00	457	3.00	76	450	8.04	79	8.19	208	9.81	249	4,415	19,639	12.77	5.79
1800.300.0500S	18.00	457	3.00	76	500	8.93	88	8.43	214	9.57	243	4,780	21,262	13.63	6.18
1800.300.0550S	18.00	457	3.00	76	550	9.82	96	8.50	216	9.50	241	5,231	23,269	14.33	6.50
1800.300.0600S	18.00	457	3.00	76	600	10.71	105	8.86	225	9.14	232	5,496	24,447	15.44	7.00
1800.300.0650S	18.00	457	3.00	76	650	11.61	114	8.98	228	9.02	229	5,873	26,124	15.77	7.15
1800.300.0700S	18.00	457	3.00	76	700	12.50	123	9.09	231	8.91	226	6,227	27,699	16.69	7.57
1800.300.0800S	18.00	457	3.00	76	800	14.23	140	9.76	248	8.24	209	6,600	29,358	19.69	8.93
Tender/Linear															
0350.300.0050	4.72	120	3.00	76	50	0.89	9	1.22	31	3.50	89	175	778	1.41	0.64
Helper															
HELPER300	4.85	123	3.00	76	6	0.11	1	0.49	12	4.36	111	27	121	0.35	0.16
New! HELPER300T	4.84	123	3.05	78	23	0.41	4	0.94	24	3.90	99	91	405	0.88	0.40
Spacer (ID locating main to helper/tender coupling spacer)															
SPACER300			3.00	76											
Isolator (Delrin Seat Plate)															
New! ISOLATOR300			3.00	76											
Torsion Release Bearing															
TRB300			3.00	76											

Coil Sleeve (Fits 3.00" I.D. Springs)	Qty	Spring Diameter Range		Spring Wire Diameter Range		Coil Sleeve Length	
		inch	mm	inch	mm	inch	mm
CS3001	2	2.50-3.50	64-89	0.423-0.541	11-14	10.31	262
CS3002	2	2.50-3.50	64-89	0.551-0.650	14-17	10.31	262

Protective Spring Bags-Pair (Fits 3.00" I.D. Springs)	Qty	Spring Diameter		Spring Length	
		inch	mm	inch	mm
ESB12.300	2	3.00	76	10" - 12"	254-305
ESB14.300	2	3.00	76	12" - 14"	305-356
ESB16.300	2	3.00	76	14" - 16"	356-406
Protective Neoprene Spring Bags-Pair (Fits 3.00" I.D. Springs)					
ESBN20.300	2	3.00	76	20" - 22"	508-559
ESBN22.300	2	3.00	76	22" - 24"	559-610



COILOVER | 3.75" I.D. (Off-Road)

Part Number	Length		Inside Diameter		Rate			Block Height		Travel		Load at Block Height		Weight	
	inch	mm	inch	mm	lbs/inch	kg/mm	N/mm	inch	mm	inch	mm	lbs	N	lbs	kgs
8.00 (length in inches) (Silver)															
New! 0800.375.0300S	8.00	203	3.75	95	200	3.57	34	2.12	54	5.88	149	1,175	5,228	2.40	1.09
New! 0800.375.0300S	8.00	203	3.75	95	250	4.46	44	2.54	65	5.46	139	1,364	6,067	2.67	1.21
New! 0800.375.0300S	8.00	203	3.75	95	300	5.36	53	2.40	61	5.59	142	1,676	7,456	3.06	1.40
10.00 (length in inches) (Silver)															
New! 1000.375.0200S	10.00	254	3.75	95	200	4.46	44	2.95	75	7.05	179	1,762	7,838	3.95	1.79
1000.375.0250S	10.00	254	3.75	95	250	4.46	44	2.95	75	7.05	179	1,762	7,838	3.95	1.79
1000.375.0300S	10.00	254	3.75	95	300	5.36	53	3.19	81	6.81	173	2,043	9,088	4.56	2.07
1000.375.0350S	10.00	254	3.75	95	350	6.25	61	3.27	83	6.73	171	2,356	10,480	4.85	2.20
1000.375.0400S	10.00	254	3.75	95	400	7.14	70	3.39	86	6.61	168	2,645	11,765	5.22	2.37
1000.375.0450S	10.00	254	3.75	95	450	8.04	79	3.50	89	6.50	165	2,923	13,002	5.62	2.55
1000.375.0500S	10.00	254	3.75	95	500	8.93	88	3.66	93	6.34	161	3,169	14,096	6.13	2.78
12.00 (length in inches) (Silver)															
1200.375.0200S	12.00	305	3.75	95	200	3.57	35	3.38	86	8.62	219	1,725	7,673	4.39	1.99
1200.375.0250S	12.00	305	3.75	95	250	4.46	44	3.56	90	8.44	214	2,111	9,390	4.94	2.24
1200.375.0300S	12.00	305	3.75	95	300	5.36	53	3.84	98	8.16	207	2,447	10,885	5.69	2.58
1200.375.0350S	12.00	305	3.75	95	350	6.25	61	4.17	106	7.83	199	2,741	12,193	6.57	2.98
1200.375.0400S	12.00	305	3.75	95	400	7.14	70	4.28	109	7.72	196	3,087	13,732	7.01	3.18
1200.375.0500S	12.00	305	3.75	95	500	8.93	88	4.57	116	7.43	189	3,716	16,530	8.04	3.65
1200.375.0600S	12.00	305	3.75	95	600	10.71	105	5.03	128	6.98	177	4,186	18,622	10.49	4.76
1200.375.0700S	12.00	305	3.75	95	700	12.50	123	4.96	126	7.04	179	4,927	21,916	10.05	4.56
14.00 (length in inches) (Silver)															
New! 1400.375.0250S	14.00	356	3.75	95	250	4.46	44	4.53	115	9.49	241	2,370	10,542	7.05	3.20
1400.375.0300S	14.00	356	3.75	95	300	5.36	53	4.71	120	9.29	236	2,787	12,397	7.49	3.40
1400.375.0350S	14.00	356	3.75	95	350	6.25	61	5.04	128	8.96	228	3,135	13,945	8.51	3.86
1400.375.0400S	14.00	356	3.75	95	400	7.14	70	5.15	131	8.85	225	3,541	15,751	9.01	4.09
1400.375.0450S	14.00	356	3.75	95	450	8.04	79	5.28	134	8.72	221	3,925	17,459	9.57	4.34
16.00 (length in inches) (Silver)															
New! 1600.375.0250S	16.00	406	3.75	95	250	4.46	44	5.42	138	10.58	269	2,644	11,762	8.88	4.03
New! 1600.375.0300S	16.00	406	3.75	95	300	5.36	53	5.80	147	10.20	259	3,060	13,613	10.25	4.65
New! 1600.375.0350S	16.00	406	3.75	95	350	6.25	61	5.98	152	10.02	254	3,505	15,592	10.96	4.97
New! 1600.375.0400S	16.00	406	3.75	95	400	7.14	70	6.26	159	9.74	247	3,893	17,319	12.10	5.49
18.00 (length in inches) (Silver)															
1800.375.0700S	18.00	457	3.75	95	700	12.50	123	8.72	221	9.28	236	6,499	28,909	21.69	9.84
1800.375.0750S	18.00	457	3.75	95	750	13.39	131	9.01	229	8.99	228	6,741	29,985	23.08	10.47
1800.375.0800S	18.00	457	3.75	95	800	14.29	140	8.95	227	9.05	230	7,239	32,201	23.23	10.54
20.00 (length in inches) (Silver)															
2000.375.0300S	20.00	508	3.75	95	300	5.36	53	7.36	187	12.64	321	3,792	16,868	13.62	6.18
2000.375.0400S	20.00	508	3.75	95	400	7.14	70	8.21	209	11.79	299	4,716	20,978	16.84	7.64
2000.375.0500S	20.00	508	3.75	95	500	8.93	88	9.06	230	10.94	278	5,471	24,336	20.98	9.52
2000.375.0600S	20.00	508	3.75	95	600	10.71	105	9.49	241	10.51	267	6,307	28,055	23.32	10.58
2000.375.0650S	20.00	508	3.75	95	650	11.61	114	9.76	248	10.24	260	6,654	29,598	24.68	11.19
2000.375.0675S	20.00	508	3.75	95	675	12.05	118	9.88	251	10.12	257	6,831	30,386	25.35	11.50
2000.375.0700S	20.00	508	3.75	95	700	12.50	123	10.04	255	9.96	253	6,973	31,017	26.12	11.85
2000.375.0750S	20.00	508	3.75	95	750	13.39	131	10.40	264	9.60	244	7,197	32,014	27.84	12.63
22.00 (length in inches) (Silver)															
2200.375.0300S	22.00	559	3.75	95	300	5.36	53	8.31	211	13.69	348	4,107	18,269	16.00	7.26
2200.375.0400S	22.00	559	3.75	95	400	7.14	70	9.16	233	12.84	326	5,135	22,842	19.48	8.84
2200.375.0450S	22.00	559	3.75	95	450	8.04	79	9.49	241	12.52	318	5,637	25,073	22.35	10.14
2200.375.0500S	22.00	559	3.75	95	500	8.93	88	10.07	256	11.93	303	5,964	26,529	24.07	10.92
2200.375.0550S	22.00	559	3.75	95	550	9.82	96	10.41	264	11.59	294	6,373	28,348	26.29	11.93
2200.375.0600S	22.00	559	3.75	95	600	10.71	105	11.00	279	11.00	279	6,601	29,363	28.28	12.83
2200.375.0700S	22.00	559	3.75	95	700	12.50	123	11.09	282	10.91	277	7,638	33,975	29.71	13.48
2200.375.0800S	22.00	559	3.75	95	800	14.29	140	11.82	300	10.18	259	8,136	36,191	33.43	15.16



COILOVER | 3.75" I.D. (Off-Road)

Part Number	Length		Inside Diameter		Rate			Block Height		Travel		Load at Block Height		Weight	
	inch	mm	inch	mm	lbs/inch	kg/mm	N/mm	inch	mm	inch	mm	lbs	N	lbs	kgs
24.00 (length in inches) (Silver)															
2400.375.0300S	24.00	610	3.75	95	300	5.36	53	9.37	238	14.63	372	4,388	19,519	18.73	8.50
2400.375.0350S	24.00	610	3.75	95	350	6.25	61	9.78	248	14.22	361	4,977	22,139	20.54	9.32
2400.375.0400S	24.00	610	3.75	95	400	7.14	70	10.47	266	13.53	344	5,411	24,069	23.96	10.87
2400.375.0450S	24.00	610	3.75	95	450	8.04	79	11.57	294	12.43	316	5,591	24,870	28.15	12.77
2400.375.0500S	24.00	610	3.75	95	500	8.93	88	11.16	283	12.84	326	6,419	28,553	27.53	12.49
2400.375.0550S	24.00	610	3.75	95	550	9.82	96	11.91	303	12.09	307	6,652	29,589	30.66	13.91
2400.375.0600S	24.00	610	3.75	95	600	10.71	105	12.10	307	11.90	302	7,137	31,747	32.05	14.54
2400.375.0650S	24.00	610	3.75	95	650	11.61	114	12.65	321	11.35	288	7,380	32,828	34.12	15.48
2400.375.0700S	24.00	610	3.75	95	700	12.50	123	12.58	320	11.42	290	7,995	35,563	35.15	15.94
2400.375.0800S	24.00	610	3.75	95	800	14.29	140	12.59	320	11.41	290	9,131	40,615	35.81	16.24
33.00 (length in inches) (Silver)															
3300.375.0115S	33.00	838	3.75	95	115	2.05	20	13.29	338	19.71	501	2,267	10,084	23.01	10.44
3300.375.0130S	33.00	838	3.75	95	130	2.32	23	13.73	349	19.27	489	2,504	11,138	24.68	11.19
Helper															
HELPER375	6.07	154	3.75	95	45	0.80	8	1.38	35	4.69	119	253	1,126	1.90	0.86
Spacer (ID locating main to helper/tender coupling spacer)															
New! SPACER375			3.75	95											



PRO-UTV | Performance Spring Systems

- All **PRO-UTV** Systems Include Springs, Sliders, Stop Rings* and Setup Instructions for Easy Bolt-on Installation
- Engineered and Tested FOR Drivers–BY Drivers for Maximum Performance on Any Terrain
- Race Proven Durability, Quality and Repeatability You Can Rely On
- Made By Eibach in the USA
- Lifetime Warranty

PRO-UTV Stage 1 - Our Stage 1 System, for 2 or 4 seat vehicles, replaces the factory springs with our race proven Eibach dual-springs to deliver a durable, repeatable performance and a sag free ride.

PRO-UTV Stage 2 - Perfect for the weekend warrior! Designed for 2 or 4 seat vehicles, this system delivers the confidence and control you need to keep the hammer down and lead the pack. An adjustable lockout collar is included to allow fine tuning of the transition point of the dual spring setup—for a smooth ride over rough terrain and the higher additional rate to prevent bottoming in the g-outs. You will immediately notice better turn-in response and stay hooked-up to power out of the turns.

PRO-UTV Stage 3 - Engineered for the 4-seat vehicles with higher loads and additional passengers. This system offers a slightly more aggressive spring rate to maintain the balance you need at the limit. An adjustable lockout collar is included to allow fine tuning of the transition point of the dual spring setup—for a plush ride over rough terrain and the higher additional rate to prevent bottoming. Perfect for vehicles loaded with spares, tools or passengers.

Don't have the factory coilovers? Not a problem. Our line of ERO parts and accessories offer thousands of rates, lengths and combinations to fine tune your new setup.

*Stop Rings not included in Stage 1



PRO-UTV | Performance Spring Systems

Part Number	Length		Inside Diameter		Rate			Block Height		Travel		Load at Block Height		Weight	
	inch	mm	inch	mm	lbs/inch	kg/mm	N/mm	inch	mm	inch	mm	lbs	N	lbs	kgs
Polaris Razor XP 1000 EPS, 1000cc (2014-UP)*															
New! E85-209-001-05-22 (Stage 1 - OE Replacement)															
0600.300.0150S	6.00	152	3.00	76	150	2.68	26	1.61	41	4.39	112	659	2,932	1.12	0.51
1000.300.0200S	10.00	254	3.00	76	200	3.57	35	3.07	78	6.93	176	1,382	6,147	2.93	1.33
0600.300.0100S	6.00	152	3.00	76	100	1.79	18	1.31	33	4.69	119	469	2,085	0.78	0.35
1800.300.0200S	18.00	457	3.00	76	200	3.57	35	6.34	161	11.66	296	2,330	10,364	7.81	3.54
New! E85-209-001-02-22 (Stage 2 - 2 Passengers w/o Load)															
0600.300.0200S	6.00	152	3.00	76	200	3.57	35	1.78	45	4.24	108	843	3,750	1.37	0.62
1000.300.0250S	10.00	254	3.00	76	250	4.46	44	3.35	85	6.65	169	1,662	7,393	3.43	1.56
1000.300.0150S	10.00	254	3.00	76	150	2.68	26	2.91	74	7.09	180	1,063	4,728	2.54	1.15
1800.300.0300S	18.00	457	3.00	76	300	5.36	53	7.20	183	10.80	274	3,242	14,421	9.92	4.50
New! Polaris Razor XP 4 1000 EPS, 1000cc (2014-UP)*															
E85-209-001-04-22 (Stage 1 - OE Replacement)															
0600.300.0300S	6.00	152	3.00	76	300	5.36	53	1.93	49	4.06	103	1,219	5,422	1.65	0.75
1000.300.0350S	10.00	254	3.00	76	350	6.25	61	3.82	97	6.18	157	2,164	9,624	4.39	1.99
0600.300.0150S	6.00	152	3.00	76	150	2.68	26	1.61	41	4.39	112	659	2,932	1.12	0.51
1800.300.0300S	18.00	457	3.00	76	300	5.36	53	7.20	183	10.80	274	3,242	14,421	9.92	4.50
New! E85-209-001-01-22 (Stage 2 - 4 Passengers w/o Load)															
0600.300.0350S	6.00	152	3.00	76	350	6.25	61	2.05	52	3.97	101	1,389	6,179	1.83	0.83
1000.300.0350S	10.00	254	3.00	76	350	6.25	61	3.82	97	6.18	157	2,164	9,624	4.39	1.99
0800.300.0150S	8.00	203	3.00	76	150	2.68	26	2.06	52	5.94	151	2,107	3,964	1.59	0.72
1800.300.0300S	18.00	457	3.00	76	300	5.36	53	7.20	183	10.80	274	3,242	14,421	9.92	4.50
New! E85-209-001-03-22 (Stage 3 - 4 Passengers w/Load)															
0600.300.0350S	6.00	152	3.00	76	350	6.25	61	2.05	52	3.97	101	1,389	6,179	1.83	0.83
1000.300.0400S	10.00	254	3.00	76	400	7.14	70	3.98	101	6.02	153	2,414	10,737	4.76	2.16
0800.300.0250S	8.00	203	3.00	76	250	4.46	44	2.62	67	5.38	137	1,345	5,978	2.45	1.11
1800.300.0300S	18.00	457	3.00	76	300	5.36	53	7.20	183	10.80	274	3,242	14,421	9.92	4.50

*For Walker Evans equipped vehicles only.



PRO-UTV | Suspension Stabilizer Bar

Take your UTV to the next level with our PRO-UTV Performance Stabilizer Bar!

- Reduced Body Roll Through Increased Design Stiffness Over Stock Sway Bar
- Engineered to Perfectly Complement Each PRO-UTV Spring System
- Three Way Adjustability to Fine Tune to Driver Preference
- Easy-Direct Replacement Installation
- Made by Eibach in the USA

	Size		Rate - 1		Rate - 2		Rate - 3	
	inch	mm	lbs/inch	N/mm	lbs/inch	N/mm	lbs/inch	N/mm
PRO-UTV Suspension Stabilizer Bar								
Polaris Razor XP 1000 EPS, 1000cc (2014-UP)								
New! E40-209-001-02-01 (Rear Bar & End Link Kit)	1.14	29 Tubular	301	53	383	67	548	96
New! E40-209-001-01-01 (Rear Bar only)	1.14	29 Tubular	301	53	383	67	548	96
Polaris Razor XP 4 1000 EPS, 1000cc (2014-UP)								
New! E40-209-001-02-01 (Rear Bar & End Link Kit)	1.14	29 Tubular	301	53	383	67	548	96
New! E40-209-001-01-01 (Rear Bar only)	1.14	29 Tubular	301	53	383	67	548	96

PRO-UTV Suspension Accessories

- New! LOCKOUT300 (Lockout Ring)
- New! SLIDER300
- New! UEL1 (End Link Kit)



PLATINUM FRONT | Coil Bind

Part Number	Length		Outside Diameter		Rate @ 1200lbs & 1"	Height @ 1200lbs	Rate @ 1500lbs & 1"	Height @ 1500lbs	Block Height	Travel - 1500lbs to Block	Weight	
	inch	mm	inch	mm	lbs/inch	inch	lbs/inch	inch	inch	inch	lbs	kgs
8.75 (length in inches)												
EF360.350-3345	8.75	222	5.75	146	360	5.536	350	4.712	2.190	2.522	4.87	2.21
EF375.365-3526	8.75	222	5.75	146	375	5.696	365	4.865	2.170	2.695	5.05	2.29
EF400.380-3720	8.75	222	5.75	146	400	5.849	380	5.094	2.130	2.964	4.73	2.15
EF425.415-3925	8.75	222	5.75	146	425	6.106	415	5.404	2.180	3.224	4.71	2.14
EF450.440-3990	8.75	222	5.75	146	450	6.261	440	5.587	2.270	3.317	4.74	2.15



OPEN HELIX | Front Springs

These Open Helix Springs were produced to achieve the largest end gap possible on the open end of the spring (Bottom). Rate Graph, Block Height, Travel and Load at Block Height data are available upon request.

Part Number	Length		Outside Diameter		Wire Diameter	Weight	
	inch	mm	inch	mm	inch	lbs	kgs
7.25 (length in inches)							
0725.525.778H	7.25	184	5.25	133	0.778	7.96	3.61
0725.525.906H	7.25	184	5.25	133	0.906	8.66	3.93
7.50 (length in inches)							
0750.575.778H	7.50	191	5.75	146	0.778	9.26	4.20
0750.575.876H	7.50	191	5.75	146	0.876	10.30	4.67
0750.575.906H	7.50	191	5.75	146	0.906	10.93	4.96
0750.575.925H	7.50	191	5.75	146	0.925	11.38	5.16
0750.575.945H	7.50	191	5.75	146	0.945	12.81	5.81
0750.575.984H	7.50	191	5.75	146	0.984	12.72	5.77
0750.575.1004H	7.50	191	5.75	146	1.004	14.20	6.44



CONVENTIONAL | Front Springs

Part Number	Length		Outside Diameter		Rate		Block Height		Travel		Load at Block Height		Weight	
	inch	mm	inch	mm	lbs/inch	N/mm	inch	mm	inch	mm	lbs	N	lbs	kgs
8.75 (length in inches) - 5.75" O.D.														
0875.575.0300	8.75	222	5.75	146	300	53	2.66	68	6.05	154	1,815	8,073	3.95	1.79
0875.575.0325	8.75	222	5.75	146	325	57	2.76	70	5.95	151	1,933	8,598	4.19	1.90
0875.575.0350	8.75	222	5.75	146	350	61	2.84	72	5.87	149	2,054	9,137	4.32	1.96
0875.575.0375	8.75	222	5.75	146	375	66	2.91	74	5.80	147	2,175	9,675	5.11	2.32
0875.575.0400	8.75	222	5.75	146	400	70	2.58	66	6.13	156	2,452	10,907	2.64	1.20
0875.575.0425	8.75	222	5.75	146	425	74	2.92	74	5.79	147	2,462	10,951	4.61	2.09
0875.575.0450	8.75	222	5.75	146	450	79	2.84	72	5.87	149	2,640	11,743	4.65	2.11
0875.575.0460	8.75	222	5.75	146	460	81	2.97	75	5.74	146	2,641	11,748	4.78	2.17
0875.575.0475	8.75	222	5.75	146	475	83	3.02	77	5.69	145	2,703	12,023	4.94	2.24
0875.575.0500	8.75	222	5.75	146	500	88	2.65	67	6.06	154	3,031	13,482	4.65	2.11
0875.575.0525	8.75	222	5.75	146	525	92	3.07	78	5.64	143	2,961	13,171	5.09	2.31
0875.575.0550	8.75	222	5.75	146	550	96	2.99	76	5.72	145	3,145	13,990	5.14	2.33
0875.575.0575	8.75	222	5.75	146	575	101	3.17	81	5.54	141	3,184	14,163	5.42	2.46
0875.575.0600	8.75	222	5.75	146	600	105	3.04	77	5.67	144	3,401	15,128	5.29	2.40
0875.575.0625	8.75	222	5.75	146	625	109	3.22	82	5.49	139	3,429	15,253	5.58	2.53
0875.575.0650	8.75	222	5.75	146	650	114	3.21	82	5.50	140	3,574	15,898	5.86	2.66
0875.575.0675	8.75	222	5.75	146	675	118	3.28	83	5.44	138	3,669	16,320	5.75	2.61
0875.575.0700	8.75	222	5.75	146	700	123	3.08	78	5.63	143	3,941	17,530	5.49	2.49



CONVENTIONAL | Front Springs

Part Number	Length		Outside Diameter		Rate		Block Height		Travel		Load at Block Height		Weight	
	inch	mm	inch	mm	lbs/inch	N/mm	inch	mm	inch	mm	lbs	N	lbs	kg
0875.575.0750	8.75	222	5.75	146	750	131	3.43	87	5.28	134	3,961	17,619	6.26	2.84
0875.575.0800	8.75	222	5.75	146	800	140	3.48	88	5.23	133	4,184	18,611	6.70	3.04
0875.575.0825	8.75	222	5.75	146	825	144	3.48	88	5.23	133	4,315	19,194	6.70	3.04
0875.575.0850	8.75	222	5.75	146	850	149	3.58	91	5.13	130	4,359	19,390	7.07	3.21
0875.575.0875	8.75	222	5.75	146	875	153	3.26	83	5.45	138	4,769	21,213	6.81	3.09
0875.575.0900	8.75	222	5.75	146	900	158	3.69	94	5.03	128	4,523	20,119	7.69	3.49
0875.575.0925	8.75	222	5.75	146	925	162	3.74	95	4.97	126	4,601	20,466	7.65	3.47
0875.575.0950	8.75	222	5.75	146	950	166	3.74	95	4.97	126	4,726	21,022	7.65	3.47
0875.575.0975	8.75	222	5.75	146	975	171	3.74	95	4.97	126	4,849	21,569	7.65	3.47
0875.575.1000	8.75	222	5.75	146	1,000	175	3.79	96	4.92	125	4,923	21,898	7.98	3.62
0875.575.1025	8.75	222	5.75	146	1,025	179	3.79	96	4.92	125	5,046	22,446	7.98	3.62
0875.575.1050	8.75	222	5.75	146	1,050	184	3.74	95	5.01	127	5,260	23,396	8.04	3.65
0875.575.1100	8.75	222	5.75	146	1,100	193	3.90	99	4.85	123	5,338	23,743	8.64	3.92
0875.575.1150	8.75	222	5.75	146	1,150	201	4.49	114	4.22	107	4,855	21,596	9.92	4.50
0875.575.1200	8.75	222	5.75	146	1,200	210	3.80	97	4.91	125	5,893	26,213	8.35	3.79
0875.575.1225	8.75	222	5.75	146	1,225	214	3.97	101	4.75	121	5,812	25,853	8.84	4.01
0875.575.1250	8.75	222	5.75	146	1,250	219	3.90	99	4.85	123	6,065	26,977	8.64	3.92
0875.575.1300	8.75	222	5.75	146	1,300	228	4.06	103	4.69	119	6,104	27,150	9.26	4.20
0875.575.1325	8.75	222	5.75	146	1,325	232	4.07	103	4.64	118	6,153	27,370	9.26	4.20
0875.575.1350	8.75	222	5.75	146	1,350	236	4.06	103	4.69	119	6,338	28,194	9.26	4.20
0875.575.1400	8.75	222	5.75	146	1,400	245	3.85	98	4.86	123	6,807	30,279	8.55	3.88
0875.575.1450	8.75	222	5.75	146	1,450	254	4.06	103	4.69	119	6,808	30,282	9.37	4.25
0875.575.1500	8.75	222	5.75	146	1,500	263	4.22	107	4.49	114	6,741	29,985	9.90	4.49
0875.575.1525	8.75	222	5.75	146	1,525	267	4.22	107	4.49	114	6,853	30,484	9.90	4.49
0875.575.1550	8.75	222	5.75	146	1,550	271	3.84	98	4.87	124	7,541	33,544	9.83	4.46
0875.575.1600	8.75	222	5.75	146	1,600	280	4.04	103	4.67	119	7,466	33,210	9.37	4.25
0875.575.1650	8.75	222	5.75	146	1,650	289	3.62	92	5.13	130	8,461	37,638	9.28	4.21
0875.575.1700	8.75	222	5.75	146	1,700	298	4.29	109	4.42	112	7,518	33,442	10.40	4.72
0875.575.1750	8.75	222	5.75	146	1,750	306	4.14	105	4.57	116	7,995	35,563	9.76	4.43
0875.575.1800	8.75	222	5.75	146	1,800	315	4.24	108	4.47	114	8,048	35,799	10.18	4.62
0875.575.1850	8.75	222	5.75	146	1,850	324	3.64	92	5.07	129	9,381	41,729	9.52	4.32
0875.575.1900	8.75	222	5.75	146	1,900	333	4.24	108	4.47	114	8,496	37,792	10.18	4.62
0875.575.2000	8.75	222	5.75	146	2,000	350	4.29	109	4.42	112	8,845	39,344	10.40	4.72
0875.575.2100	8.75	222	5.75	146	2,100	368	4.34	110	4.37	111	9,185	40,857	10.60	4.81
0875.575.2200	8.75	222	5.75	146	2,200	385	4.37	111	4.38	111	9,636	42,863	10.40	4.72
0875.575.2300	8.75	222	5.75	146	2,300	403	4.49	114	4.26	108	9,801	43,596	11.20	5.08
0875.575.2400	8.75	222	5.75	146	2,400	420	4.53	115	4.22	107	10,132	45,071	11.42	5.18
0875.575.2500	8.75	222	5.75	146	2,500	438	4.65	118	4.10	104	10,259	45,635	11.86	5.38
0875.575.2600	8.75	222	5.75	146	2,600	455	4.65	118	4.10	104	10,670	47,461	11.86	5.38
0875.575.2700	8.75	222	5.75	146	2,700	473	4.65	118	4.10	104	11,080	49,286	11.86	5.38
0875.575.2800	8.75	222	5.75	146	2,800	490	4.72	120	4.03	102	11,270	50,131	12.32	5.59



PLATINUM MODIFIED | Front Springs

Part Number	Length		Outside Diameter		Rate		Block Height		Travel		Load at Block Height		Weight	
	inch	mm	inch	mm	lbs/inch	N/mm	inch	mm	inch	mm	lbs	N	lbs	kgs
Platinum Front Short Track														
New! PF0950.500.0500	9.50	241	5.00	127	500	88	3.15	80	6.38	162	3,180	14,144	4.63	2.10
New! PF0950.500.0525	9.50	241	5.00	127	525	92	3.27	83	6.26	159	3,280	14,589	4.98	2.26
New! PF0950.500.0550	9.50	241	5.00	127	550	96	3.27	83	6.26	159	3,438	15,292	5.27	2.39
New! PF0950.500.0575	9.50	241	5.00	127	575	101	3.11	79	6.42	163	3,679	16,366	4.76	2.16
New! PF0950.500.0600	9.50	241	5.00	127	600	105	3.58	91	5.91	150	3,539	15,743	5.80	2.63



CONVENTIONAL | Front Springs

Part Number	Length		Outside Diameter		Rate		Block Height		Travel		Load at Block Height		Weight	
	inch	mm	inch	mm	lbs/inch	N/mm	inch	mm	inch	mm	lbs	N	lbs	kgs
9.50 (length in inches) - 5.00" O.D.														
0950.500.0200	9.50	241	5.00	127	200	35	2.54	65	6.96	177	1,391	6,187	3.17	1.44
0950.500.0250	9.50	241	5.00	127	250	44	2.58	66	6.92	176	1,730	7,695	3.33	1.51
0950.500.0300	9.50	241	5.00	127	300	53	2.87	73	6.63	168	1,990	8,852	3.92	1.78
0950.500.0350	9.50	241	5.00	127	350	61	2.92	74	6.58	167	2,302	10,240	4.32	1.96
0950.500.0375	9.50	241	5.00	127	375	66	3.20	81	6.30	160	2,363	10,512	4.92	2.23
0950.500.0400	9.50	241	5.00	127	400	70	3.09	78	6.41	163	2,565	11,410	4.72	2.14
0950.500.0425	9.50	241	5.00	127	400	70	3.20	81	6.30	160	2,678	11,913	4.98	2.26
0950.500.0450	9.50	241	5.00	127	450	79	3.54	90	5.96	151	2,682	11,930	5.42	2.46
0950.500.0475	9.50	241	5.00	127	475	83	3.37	86	6.13	156	2,912	12,954	5.42	2.46
0950.500.0500	9.50	241	5.00	127	500	88	3.78	96	5.72	145	2,861	12,726	5.99	2.72
0950.500.0525	9.50	241	5.00	127	525	92	3.37	86	6.13	156	3,220	14,323	5.49	2.49
0950.500.0550	9.50	241	5.00	127	550	96	3.37	86	6.13	156	3,373	15,004	5.25	2.38
0950.500.0575	9.50	241	5.00	127	575	101	3.60	91	5.90	150	3,392	15,087	6.04	2.74
0950.500.0600	9.50	241	5.00	127	600	105	3.60	91	5.90	150	3,541	15,751	5.80	2.63
0950.500.0625	9.50	241	5.00	127	625	109	3.66	93	5.84	148	3,651	16,239	6.24	2.83
0950.500.0650	9.50	241	5.00	127	650	114	3.66	93	5.84	148	3,797	16,890	5.97	2.71
0950.500.0675	9.50	241	5.00	127	675	118	3.80	97	5.71	145	3,846	17,108	6.30	2.86
0950.500.0700	9.50	241	5.00	127	700	123	3.93	100	5.57	141	3,895	17,326	6.63	3.01
0950.500.0750	9.50	241	5.00	127	750	131	3.99	101	5.51	140	4,128	18,362	6.83	3.10
0950.500.0775	9.50	241	5.00	127	775	136	4.03	102	5.48	139	4,241	18,867	6.93	3.14
0950.500.0800	9.50	241	5.00	127	800	140	4.06	103	5.44	138	4,355	19,372	7.03	3.19
0950.500.0850	9.50	241	5.00	127	850	149	4.35	110	5.15	131	4,377	19,470	7.69	3.49
0950.500.0900	9.50	241	5.00	127	900	158	4.21	107	5.29	134	4,760	21,173	7.49	3.40
0950.500.0950	9.50	241	5.00	127	950	166	4.55	116	4.95	126	4,704	20,924	8.24	3.74
0950.500.1000	9.50	241	5.00	127	1,000	175	4.65	118	4.85	123	4,852	21,583	8.55	3.88
0950.500.1050	9.50	241	5.00	127	1,050	184	4.54	115	4.96	126	5,205	23,153	8.33	3.78
0950.500.1100	9.50	241	5.00	127	1,100	193	4.61	117	4.89	124	5,382	23,940	8.55	3.88
0950.500.1200	9.50	241	5.00	127	1,200	210	5.05	128	4.45	113	5,340	23,753	10.01	4.54
0950.500.1250	9.50	241	5.00	127	1,250	219	4.90	124	4.60	117	5,750	25,577	9.68	4.39
0950.500.1300	9.50	241	5.00	127	1,300	228	5.34	136	4.16	106	5,413	24,078	10.84	4.92
0950.500.1400	9.50	241	5.00	127	1,400	245	5.03	128	4.47	114	6,259	27,841	10.14	4.60
0950.500.1500	9.50	241	5.00	127	1,500	263	5.35	136	4.15	105	6,218	27,659	11.06	5.02
0950.500.1600	9.50	241	5.00	127	1,600	280	5.57	141	3.93	100	6,289	27,975	11.97	5.43



CONVENTIONAL | Front Springs

Part Number	Length		Outside Diameter		Rate		Block Height		Travel		Load at Block Height		Weight	
	inch	mm	inch	mm	lbs/inch	N/mm	inch	mm	inch	mm	lbs	N	lbs	kgs
9.50 (length in inches) - 5.50" O.D.														
0950.550.0300	9.50	241	5.50	140	300	53	2.60	66	6.90	175	2,068	9,201	4.23	1.92
0950.550.0325	9.50	241	5.50	140	325	57	2.87	73	6.63	169	2,156	9,589	4.85	2.20
0950.550.0350	9.50	241	5.50	140	350	61	3.08	78	6.42	163	2,247	9,995	5.40	2.45
0950.550.0375	9.50	241	5.50	140	375	66	2.97	75	6.53	166	2,449	10,893	5.18	2.35
0950.550.0400	9.50	241	5.50	140	400	70	3.37	86	6.13	156	2,452	10,907	5.44	2.47
0950.550.0425	9.50	241	5.50	140	425	74	3.13	80	6.37	162	2,707	12,041	5.62	2.55
0950.550.0450	9.50	241	5.50	140	450	79	3.10	79	6.40	163	2,880	12,811	5.31	2.41
0950.550.0475	9.50	241	5.50	140	475	83	3.06	78	6.44	164	3,058	13,601	5.56	2.52
0950.550.0500	9.50	241	5.50	140	500	88	3.26	83	6.24	158	3,117	13,865	5.77	2.62
0950.550.0525	9.50	241	5.50	140	525	92	3.29	83	6.21	158	3,262	14,509	6.17	2.80
0950.550.0550	9.50	241	5.50	140	550	96	3.53	90	5.97	152	3,281	14,595	6.41	2.91
0950.550.0575	9.50	241	5.50	140	575	101	3.59	91	5.91	150	3,397	15,111	6.59	2.99
0950.550.0600	9.50	241	5.50	140	600	105	3.71	94	5.79	147	3,473	15,449	6.92	3.14
0950.550.0625	9.50	241	5.50	140	625	109	3.83	97	5.67	144	3,542	15,754	7.27	3.30
0950.550.0650	9.50	241	5.50	140	650	114	3.77	96	5.73	146	3,726	16,574	7.12	3.23
0950.550.0675	9.50	241	5.50	140	675	118	3.90	99	5.61	142	3,786	16,840	7.47	3.39
0950.550.0700	9.50	241	5.50	140	700	123	3.88	99	5.62	143	3,932	17,490	7.54	3.42
0950.550.0750	9.50	241	5.50	140	750	131	4.07	103	5.43	138	4,068	18,095	8.04	3.65
0950.550.0800	9.50	241	5.50	140	800	140	4.13	105	5.37	136	4,292	19,092	8.27	3.75
0950.550.0850	9.50	241	5.50	140	850	149	4.19	106	5.31	135	4,511	20,066	8.49	3.85
0950.550.0875	9.50	241	5.50	140	875	153	4.06	103	5.43	138	4,765	21,197	8.15	3.70
0950.550.0900	9.50	241	5.50	140	900	158	4.37	111	5.13	130	4,616	20,533	9.54	4.33
0950.550.0950	9.50	241	5.50	140	950	166	4.52	115	4.98	126	4,734	21,058	9.52	4.32
0950.550.1000	9.50	241	5.50	140	1,000	175	4.53	115	4.97	126	4,974	22,125	9.90	4.49
0950.550.1050	9.50	241	5.50	140	1,050	184	4.84	123	4.66	118	4,896	21,778	10.87	4.93
0950.550.1100	9.50	241	5.50	140	1,100	193	4.15	105	5.35	136	5,889	26,195	9.94	4.51
0950.550.1150	9.50	241	5.50	140	1,150	201	4.57	116	4.93	125	5,671	25,226	10.20	4.63
0950.550.1200	9.50	241	5.50	140	1,200	210	4.92	125	4.58	116	5,494	24,438	11.28	5.12
0950.550.1250	9.50	241	5.50	140	1,250	219	4.76	121	4.74	120	5,920	26,333	10.89	4.94
0950.550.1300	9.50	241	5.50	140	1,300	228	5.17	131	4.33	110	5,634	25,061	12.12	5.50
0950.550.1350	9.50	241	5.50	140	1,350	236	5.00	127	4.50	114	6,069	26,996	11.70	5.31
0950.550.1400	9.50	241	5.50	140	1,400	245	4.88	124	4.62	117	6,463	28,749	11.39	5.17
0950.550.1450	9.50	241	5.50	140	1,450	254	5.29	134	4.21	107	6,102	27,143	12.67	5.75
0950.550.1500	9.50	241	5.50	140	1,500	263	5.13	130	4.37	111	6,560	29,180	12.23	5.55
10.50 (length in inches) - 5.50" O.D.														
1050.550.0300	10.50	267	5.50	140	300	53	2.89	74	7.61	193	2,273	10,112	4.70	2.13
1050.550.0325	10.50	267	5.50	140	325	57	2.95	75	7.55	192	2,446	10,881	4.85	2.20
1050.550.0350	10.50	267	5.50	140	350	61	3.00	76	7.50	191	2,617	11,640	5.03	2.28
1050.550.0375	10.50	267	5.50	140	375	66	3.10	79	7.40	188	2,764	12,297	5.36	2.43
1050.550.0400	10.50	267	5.50	140	400	70	3.15	80	7.35	187	2,928	13,025	5.53	2.51



STOCK CAR | Front Springs

Part Number	Length		Outside Diameter		Rate		Block Height		Travel		Load at Block Height		Weight	
	inch	mm	inch	mm	lbs/inch	N/mm	inch	mm	inch	mm	lbs	N	lbs	kgs
11.00 (length in inches) - 5.50" O.D.														
New! 1100.550.0800	11.00	279	5.50	140	800	140	4.81	122	6.19	157	4,954	22,038	10.56	4.78
New! 1100.550.0900	11.00	279	5.50	140	900	158	5.27	134	5.73	145	5,154	22,926	11.60	5.25
New! 1100.550.1000	11.00	279	5.50	140	1,000	175	5.45	138	5.55	141	5,549	24,685	12.27	5.55
New! 1100.550.1100	11.00	279	5.50	140	1,100	193	5.51	140	5.49	139	6,037	26,854	13.04	5.90
New! 1100.550.1200	11.00	279	5.50	140	1,200	210	5.73	146	5.27	134	6,324	28,129	13.68	6.19
New! 1100.550.1300	11.00	279	5.50	140	1,300	228	5.95	151	49.54	1,258	6,562	29,187	14.52	6.57

	Spring Diameter Range		Spring Wire Diameter Range		Coil Sleeve Length	
	inch	mm	inch	mm	inch	mm
CS5001 (NASCAR Approved)	4.50-6.00	114-152	0.423-0.541	11-14	13.43	341
CS5001L	4.50-6.00	114-152	0.423-0.541	11-14	16.50	419
CS5002 (NASCAR Approved)	4.50-6.00	114-152	0.551-0.650	14-17	13.43	341
CS5002L	4.50-6.00	114-152	0.551-0.650	14-17	16.50	419



MAX LOAD REAR | 5.00" I.D

These springs are designed to handle a certain Maximum Load. If this Maximum Load is exceeded, the spring will lose free length.

Part Number	Length		Outside Diameter		Rate		Design MAX Load		Weight	
	inch	mm	inch	mm	lbs/inch	N/mm	lbs	N	lbs	kgs
Max Load Rear 5.00" O.D.										
ML0250-2.0K	11.25	286	5.00	127	250	44	2,000	8,897	4.07	1.85
ML0300-2.2K	11.25	286	5.00	127	300	53	2,200	9,787	4.07	1.85
ML0350-2.5K	11.25	286	5.00	127	350	62	2,500	11,122	4.92	2.23
ML0400-2.7K	11.25	286	5.00	127	400	70	2,700	12,011	4.49	2.04
ML0450-3.2K	11.25	286	5.00	127	450	79	3,200	14,236	5.42	2.46
ML0500-2.7K	11.25	286	5.00	127	500	88	2,700	12,011	4.84	2.20
ML0550-3.3K	11.25	286	5.00	127	550	97	3,300	14,681	5.78	2.62
ML0600-3.1K	11.25	286	5.00	127	600	106	3,100	13,791	5.95	2.70
ML0650-4.0K	11.25	286	5.00	127	650	114	4,000	17,795	6.28	2.85
ML0700-4.5K	11.25	286	5.00	127	700	123	4,500	20,019	6.07	2.75
ML0750-4.5K	11.25	286	5.00	127	750	132	4,500	20,019	6.10	2.77
ML0800-4.4K	11.25	286	5.00	127	800	141	4,400	19,574	6.48	2.94
ML0850-4.3K	11.25	286	5.00	127	850	150	4,300	19,129	7.25	3.29
ML0900-4.4K	11.25	286	5.00	127	900	158	4,400	19,574	7.12	3.23
ML0950-4.5K	11.25	286	5.00	127	950	167	4,500	20,019	7.17	3.25
ML1000-4.9K	11.25	286	5.00	127	1,000	176	4,900	21,799	7.43	3.37
ML1100-5.6K	11.25	286	5.00	127	1,100	194	5,600	24,913	7.56	3.43



PLATINUM | Rear Springs

Part Number	Length		Outside Diameter		Rate		Block Height		Travel		Load at Block Height		Weight	
	inch	mm	inch	mm	lbs/inch	N/mm	inch	mm	inch	mm	lbs	N	lbs	kgs
Rear Platinum Springs - 5.00" O.D.														
ER16.0075	16.00	406	5.00	127	75	13	2.47	63	13.53	344	1,015	4,515	3.13	1.42
ER16.0085	16.00	406	5.00	127	85	15	2.57	65	13.43	341	1,142	5,080	3.64	1.65
ER16.0100	16.00	406	5.00	127	100	18	2.92	74	13.08	332	1,308	5,818	3.90	1.77
ER16.0125	16.00	406	5.00	127	125	22	3.07	78	12.93	328	1,616	7,188	4.60	2.09
ER16.0150	16.00	406	5.00	127	150	26	3.55	90	12.45	316	1,868	8,309	5.10	2.31
ER16.0175	16.00	406	5.00	127	175	31	3.78	96	12.19	310	2,132	9,483	5.87	2.66
ER16.0200	16.00	406	5.00	127	200	35	4.06	103	11.89	302	2,379	10,581	6.50	2.96
New! ER16.0225	16.00	406	5.00	127	225	39	4.25	108	11.73	298	2,636	11,725	6.94	3.15
ER15.0150	15.00	381	5.00	127	150	26	3.26	83	11.74	298	1,761	7,834	4.72	2.14
ER15.0175	15.00	381	5.00	127	175	31	3.44	87	11.56	294	2,023	8,998	5.18	2.35
ER15.0200	15.00	381	5.00	127	200	35	3.54	90	11.45	291	2,291	10,190	5.60	2.54
ER15.0225	15.00	381	5.00	127	225	39	4.08	104	10.92	277	2,457	10,929	6.19	2.81
ER15.0250	15.00	381	5.00	127	250	44	4.29	109	10.71	272	2,678	11,912	6.90	3.13
ER14.0100	14.00	356	5.00	127	100	18	2.48	63	11.54	293	1,154	5,132	3.20	1.45
ER14.0125	14.00	356	5.00	127	125	22	2.80	71	11.23	285	1,404	6,245	3.84	1.74
ER14.0150	14.00	356	5.00	127	150	26	2.91	74	11.11	282	1,667	7,413	4.17	1.89
ER14.0275	14.00	356	5.00	127	275	48	4.01	102	9.99	254	2,747	12,219	6.20	2.81
ER14.0325	14.00	356	5.00	127	325	57	4.29	109	9.71	247	3,156	14,039	7.20	3.27
ER14.0375	14.00	356	5.00	127	375	66	4.46	113	9.54	242	3,578	15,916	7.67	3.48
ER14.0400	14.00	356	5.00	127	400	70	4.74	120	9.26	235	3,704	16,476	8.45	3.83
ER135.0350	13.50	343	5.00	127	350	61	4.01	102	9.49	241	3,322	14,777	7.47	3.39
ER13.0300	13.00	330	5.00	127	300	53	3.70	94	9.30	236	2,790	12,410	6.44	2.92
ER13.0325	13.00	330	5.00	127	325	57	3.75	95	9.25	235	3,006	13,371	6.59	2.99
ER13.0475	13.00	330	5.00	127	475	83	4.86	123	8.14	207	3,867	17,201	8.55	3.88
ER13.0500	13.00	330	5.00	127	500	88	4.71	120	8.29	211	4,145	18,438	8.55	3.88
ER125.0175	12.50	318	5.00	127	175	31	3.23	82	9.27	235	1,622	7,214	4.10	1.86
ER125.0200	12.50	318	5.00	127	200	35	3.27	83	9.22	234	1,845	8,208	5.05	2.29
ER125.0225	12.50	318	5.00	127	225	39	3.21	82	9.29	236	2,090	9,299	5.05	2.29
ER125.0250	12.50	318	5.00	127	250	44	3.50	89	8.98	228	2,245	9,988	5.71	2.59
ER125.0275	12.50	318	5.00	127	275	48	3.50	89	9.00	229	2,475	11,009	5.77	2.62
ER125.0300	12.50	318	5.00	127	300	53	3.56	90	8.94	227	2,681	11,927	5.95	2.70
ER125.0400	12.50	318	5.00	127	400	70	4.41	112	8.09	205	3,234	14,387	7.47	3.39
ER1225.0325	12.25	311	5.00	127	325	57	3.86	98	8.38	213	2,724	12,119	6.70	3.04
ER1225.0350	12.25	311	5.00	127	350	61	3.93	100	8.32	211	2,911	12,950	6.92	3.14
ER1225.0375	12.25	311	5.00	127	375	66	4.00	102	8.24	209	3,090	13,743	7.16	3.25
ER12.0400	12.00	305	5.00	127	400	70	4.12	105	7.89	200	3,152	14,021	7.43	3.37
ER12.0425	12.00	305	5.00	127	425	74	3.82	97	8.18	208	3,477	15,466	6.99	3.17
ER12.0450	12.00	305	5.00	127	450	79	3.90	99	8.10	206	3,645	16,214	7.26	3.29
ER12.0475	12.00	305	5.00	127	475	83	4.05	103	7.95	202	3,776	16,796	7.61	3.45
ER12.0500	12.00	305	5.00	127	500	88	3.94	100	8.06	205	4,030	17,926	7.48	3.39
ER12.0525	12.00	305	5.00	127	525	92	4.16	106	7.84	199	4,116	18,309	7.75	3.52
ER12.0550	12.00	305	5.00	127	550	96	4.05	103	7.95	202	4,373	19,452	7.70	3.49
ER12.0600	12.00	305	5.00	127	600	105	4.10	104	7.90	201	4,740	21,084	8.00	3.63
ER12.0650	12.00	305	5.00	127	650	114	4.62	117	7.38	187	4,797	21,338	8.80	3.99
ER115.0700	11.50	292	5.00	127	700	123	4.43	113	7.07	180	4,949	22,014	8.30	3.76
ER115.0750	11.50	292	5.00	127	750	131	4.62	117	6.88	175	5,160	22,953	9.05	4.11
ER115.0800	11.50	292	5.00	127	800	140	4.79	122	6.71	170	5,368	23,878	9.35	4.24
ER115.0850	11.50	292	5.00	127	850	149	4.74	120	6.76	172	5,746	25,559	9.65	4.38
ER115.0900	11.50	292	5.00	127	900	158	5.03	128	6.47	164	5,823	25,902	10.10	4.58
ER115.0950	11.50	292	5.00	127	950	166	5.11	130	6.39	162	6,071	27,005	10.45	4.74
ER115.1000	11.50	292	5.00	127	1,000	175	4.92	125	6.58	167	6,580	29,269	9.85	4.47
ER1125.0500	11.25	286	5.00	127	500	88	3.74	95	7.48	190	3,732	16,600	6.81	3.09
ER1125.0550	11.25	286	5.00	127	550	96	3.98	101	7.28	185	3,990	17,747	7.43	3.37



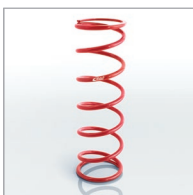
PLATINUM | Rear Springs

Part Number	Length		Outside Diameter		Rate		Block Height		Travel		Load at Block Height		Weight	
	inch	mm	inch	mm	lbs/inch	N/mm	inch	mm	inch	mm	lbs	N	lbs	kgs
ER1125.0600	11.25	286	5.00	127	600	105	3.98	101	7.24	184	4,335	19,285	7.56	3.43
ER11625.0100	11.625	295	5.00	127	100	18	9.06	230	2.57	65	904	4,020	2.40	1.09
ER11625.0125	11.625	295	5.00	127	125	22	8.94	227	2.69	68	1,119	4,976	2.62	1.19
ER11625.0150	11.625	295	5.00	127	150	26	8.70	221	2.93	74	1,309	5,819	2.95	1.34



LOADED HEIGHT | Rear Springs

Part Number	Length		Outside Diameter		Rate		Block Height		Travel		Load at Block Height		Weight	
	inch	mm	inch	mm	lbs/inch	N/mm	inch	mm	inch	mm	lbs	N	lbs	kgs
Loaded Height Rear (NASCAR Specs)(700LB @ 10.00")														
LH1.500.0125	15.79	401	5.00	127	125	22	4.10	104	11.70	297	1,462	6,503	5.84	2.65
LH1.500.0150	14.88	378	5.00	127	150	26	3.62	92	11.25	286	1,687	7,504	5.05	2.29
LH1.500.0175	14.21	361	5.00	127	175	31	3.81	97	10.38	264	1,817	8,082	5.51	2.50
LH1.500.0200	13.70	348	5.00	127	200	35	3.76	96	9.94	252	1,987	8,839	5.53	2.51
LH1.500.0225	13.31	338	5.00	127	225	39	3.73	95	9.58	243	2,155	9,586	5.58	2.53
LH1.500.0250	12.99	330	5.00	127	250	44	3.70	94	9.29	236	2,323	10,333	5.88	2.67
LH1.500.0275	12.76	324	5.00	127	275	48	4.37	111	8.39	213	2,306	10,258	7.01	3.18
LH1.500.0300	12.52	318	5.00	127	300	53	4.40	112	8.13	207	2,440	10,854	7.14	3.24
LH1.500.0325	12.36	314	5.00	127	325	57	3.84	98	8.51	216	2,765	12,299	6.08	2.76
LH1.500.0350	12.20	310	5.00	127	350	61	3.91	99	8.29	211	2,900	12,900	6.28	2.85
LH1.500.0375	12.05	306	5.00	127	375	66	4.01	102	8.06	205	3,021	13,438	6.55	2.97
LH1.500.0400	11.93	303	5.00	127	400	70	4.07	103	7.87	200	3,149	14,007	6.74	3.06
LH1.500.0425	11.85	301	5.00	127	425	74	4.02	102	7.83	199	3,327	14,799	6.59	2.99
LH1.500.0430	12.01	305	5.00	127	430	75	4.17	106	7.83	199	3,369	14,986	7.01	3.18
LH1.500.0450	11.77	299	5.00	127	450	79	4.05	103	7.70	196	3,465	15,413	6.79	3.08
LH1.500.0475	11.65	296	5.00	127	475	83	4.18	106	7.49	190	3,558	15,827	7.12	3.23
LH1.500.0500	11.61	295	5.00	127	500	88	4.21	107	7.39	188	3,693	16,427	7.05	3.20
LH1.500.0525	11.54	293	5.00	127	525	92	4.44	113	7.09	180	3,722	16,556	7.80	3.54
LH1.500.0550	11.46	291	5.00	127	550	96	4.00	102	7.47	190	4,109	18,278	6.88	3.12
LH1.500.0575	11.42	290	5.00	127	575	101	4.16	106	7.26	184	4,173	18,562	7.25	3.29
LH1.500.0600	11.38	289	5.00	127	600	105	4.29	109	7.08	180	4,230	18,816	7.60	3.45
LH1.500.0650	11.26	286	5.00	127	650	114	4.62	117	6.66	169	4,328	19,252	8.42	3.82
LH1.500.0700	11.18	284	5.00	127	700	123	4.96	126	6.24	158	4,367	19,425	7.89	3.58
LH1.500.0750	11.14	283	5.00	127	750	131	4.72	120	6.41	163	4,808	21,387	8.82	4.00
LH1.500.0800	11.18	284	5.00	127	800	140	5.75	146	5.43	138	4,259	18,945	11.39	5.17
LH1.500.0850	11.14	283	5.00	127	850	149	5.17	131	5.97	152	4,970	22,108	10.07	4.57
LH1.500.0900	11.10	282	5.00	127	900	158	5.61	142	5.49	139	4,909	21,836	11.22	5.09
LH1.500.0925	11.10	282	5.00	127	925	162	5.46	139	5.64	143	5,216	23,202	10.89	4.94
LH1.500.0950	11.10	282	5.00	127	950	166	5.32	135	5.79	147	5,448	24,234	10.58	4.80
LH1.500.0975	11.10	282	5.00	127	975	171	5.24	133	5.86	149	5,528	24,590	10.40	4.72
LH1.500.1000	11.10	282	5.00	127	1,000	175	5.54	141	5.57	141	5,527	24,585	11.77	5.34
LH1.500.1100	11.10	282	5.00	127	1,100	193	5.75	146	5.35	136	5,878	26,146	13.51	6.13
LH1.500.1200	11.10	282	5.00	127	1,200	210	5.71	145	5.39	137	6,464	28,752	13.47	6.11
LH1.500.1300	11.10	282	5.00	127	1,300	228	5.98	152	5.12	130	6,659	29,620	13.40	6.08
LH1.500.1400	11.10	282	5.00	127	1,400	245	5.97	152	5.13	130	7,181	31,943	13.51	6.13



CONVENTIONAL | Rear Springs

Part Number	Length		Outside Diameter		Rate		Block Height		Travel		Load at Block Height		Weight	
	inch	mm	inch	mm	lbs/inch	N/mm	inch	mm	inch	mm	lbs	N	lbs	kg
11.00 (length in inches) - 5.00" O.D.														
1100.500.0125	11.00	279	5.00	127	125	22	2.41	61	8.59	218	1,073	4,773	2.93	1.33
1100.500.0150	11.00	279	5.00	127	150	26	2.55	65	8.45	215	1,268	5,640	3.22	1.46
1100.500.0175	11.00	279	5.00	127	175	31	2.73	69	8.27	210	1,447	6,437	3.59	1.63
1100.500.0200	11.00	279	5.00	127	200	35	2.89	73	8.11	206	1,621	7,211	3.97	1.80
1100.500.0225	11.00	279	5.00	127	225	39	3.16	80	7.84	199	1,763	7,842	4.52	2.05
1100.500.0250	11.00	279	5.00	127	250	44	3.17	81	7.83	199	1,957	8,705	4.61	2.09
1100.500.0275	11.00	279	5.00	127	275	48	3.18	81	7.82	199	2,150	9,564	4.67	2.12
1100.500.0300	11.00	279	5.00	127	300	53	3.80	97	7.20	183	2,159	9,604	5.93	2.69
1100.500.0325	11.00	279	5.00	127	325	57	3.33	85	7.67	195	2,493	11,089	5.07	2.30
1100.500.0350	11.00	279	5.00	127	350	61	3.65	93	7.35	187	2,574	11,450	5.75	2.61
1100.500.0375	11.00	279	5.00	127	375	66	4.01	102	6.99	178	2,622	11,663	6.55	2.97
1100.500.0400	11.00	279	5.00	127	400	70	3.83	97	7.17	182	2,867	12,753	6.22	2.82
1100.500.0425	11.00	279	5.00	127	425	74	3.90	99	7.10	180	3,018	13,425	6.44	2.92
1100.500.0450	11.00	279	5.00	127	450	79	3.78	96	7.22	183	3,249	14,452	6.22	2.82
1100.500.0500	11.00	279	5.00	127	500	88	4.03	102	6.97	177	3,486	15,506	6.83	3.10
1100.500.0550	11.00	279	5.00	127	550	96	4.29	109	6.71	170	3,690	16,414	7.49	3.40
1100.500.0600	11.00	279	5.00	127	600	105	4.55	116	6.45	164	3,871	17,219	8.20	3.72
1100.500.0650	11.00	279	5.00	127	650	114	4.69	119	6.31	160	4,104	18,255	9.06	4.11
1100.500.0700	11.00	279	5.00	127	700	123	4.69	119	6.31	160	4,420	19,661	8.66	3.93
1100.500.0750	11.00	279	5.00	127	750	131	4.69	119	6.31	160	4,736	21,067	8.75	3.97
1100.500.0800	11.00	279	5.00	127	800	140	4.76	121	6.24	158	4,988	22,188	8.99	4.08
1100.500.0850	11.00	279	5.00	127	850	149	4.80	122	6.20	157	5,267	23,429	9.23	4.19
1100.500.0900	11.00	279	5.00	127	900	158	4.96	126	6.04	153	5,435	24,176	9.10	4.13
13.00 (length in inches) - 5.00" O.D.														
1300.500.0125	13.00	330	5.00	127	125	22	2.90	74	10.10	257	1,262	5,614	3.70	1.68
1300.500.0150	13.00	330	5.00	127	150	26	3.05	77	9.95	253	1,492	6,637	4.06	1.84
1300.500.0175	13.00	330	5.00	127	175	31	3.49	89	9.51	242	1,663	7,397	4.96	2.25
1300.500.0180	13.00	330	5.00	127	180	32	3.23	82	9.77	248	1,758	7,820	4.47	2.03
1300.500.0200	13.00	330	5.00	127	200	35	3.46	88	9.54	242	1,907	8,483	4.98	2.26
1300.500.0225	13.00	330	5.00	127	225	39	3.70	94	9.30	236	2,092	9,306	5.53	2.51
1300.500.0250	13.00	330	5.00	127	250	44	4.01	102	8.99	228	2,248	10,000	6.19	2.81
1300.500.0275	13.00	330	5.00	127	275	48	4.38	111	8.62	219	2,371	10,547	7.01	3.18
1300.500.0300	13.00	330	5.00	127	300	53	4.10	104	8.90	226	2,671	11,881	6.52	2.96
1300.500.0325	13.00	330	5.00	127	325	57	4.17	106	8.83	224	2,869	12,762	6.74	3.06
1300.500.0350	13.00	330	5.00	127	350	61	4.24	108	8.76	223	3,066	13,638	6.96	3.16
1300.500.0375	13.00	330	5.00	127	375	66	4.31	109	8.69	221	3,258	14,492	7.19	3.26
1300.500.0400	13.00	330	5.00	127	400	70	4.41	112	8.59	218	3,434	15,275	7.47	3.39
1300.500.0450	13.00	330	5.00	127	450	79	4.65	118	8.35	212	3,757	16,712	8.09	3.67
1300.500.0500	13.00	330	5.00	127	500	88	4.93	125	8.07	205	4,036	17,953	8.84	4.01
1300.500.0550	13.00	330	5.00	127	550	96	5.28	134	7.72	196	4,248	18,896	9.72	4.41
1300.500.0600	13.00	330	5.00	127	600	105	5.57	141	7.43	189	4,458	19,830	10.56	4.79
1300.500.0700	13.00	330	5.00	127	700	123	5.59	142	7.41	188	5,186	23,068	10.82	4.91
15.00 (length in inches) - 5.00" O.D.														
1500.500.0125	15.00	381	5.00	127	125	22	4.10	104	10.90	277	1,363	6,063	5.82	2.64
1500.500.0150	15.00	381	5.00	127	150	26	3.86	98	11.14	283	1,670	7,428	5.58	2.53
1500.500.0165	15.00	381	5.00	127	165	29	5.05	128	9.95	253	1,642	7,304	7.89	3.58
1500.500.0175	15.00	381	5.00	127	175	31	4.09	104	10.91	277	1,908	8,487	6.13	2.78
1500.500.0200	15.00	381	5.00	127	200	35	4.36	111	10.64	270	2,128	9,466	6.74	3.06
1500.500.0225	15.00	381	5.00	127	225	39	4.63	118	10.37	263	2,333	10,378	7.41	3.36
1500.500.0250	15.00	381	5.00	127	250	44	4.63	118	10.37	263	2,593	11,534	7.52	3.41
1500.500.0275	15.00	381	5.00	127	275	48	4.65	118	10.35	263	2,846	12,660	7.67	3.48
1500.500.0300	15.00	381	5.00	127	300	53	5.02	128	9.98	253	2,994	13,318	8.53	3.87



CONVENTIONAL | Rear Springs

Part Number	Length		Outside Diameter		Rate		Block Height		Travel		Load at Block Height		Weight	
	inch	mm	inch	mm	lbs/inch	N/mm	inch	mm	inch	mm	lbs	N	lbs	kgs
16.00 (length in inches) - 5.00" O.D.														
1600.500.0100	16.00	406	5.00	127	100	18	3.34	85	12.66	322	1,265	5,627	4.36	1.98
1600.500.0125	16.00	406	5.00	127	125	22	3.80	97	12.20	310	1,525	6,784	5.25	2.38
1600.500.0150	16.00	406	5.00	127	150	26	3.94	100	12.06	306	1,810	8,051	5.62	2.55
1600.500.0175	16.00	406	5.00	127	175	31	4.17	106	11.83	300	2,070	9,208	6.19	2.81
1600.500.0200	16.00	406	5.00	127	200	35	4.79	122	11.21	285	2,241	9,968	7.52	3.41
1600.500.0225	16.00	406	5.00	127	225	39	4.74	120	11.26	286	2,533	11,267	7.54	3.42
1600.500.0250	16.00	406	5.00	127	250	44	5.11	130	10.89	277	2,723	12,112	8.40	3.81
20.00 (length in inches) - 5.00" O.D.														
2000.500.0100	20.00	508	5.00	127	100	18	4.32	110	15.68	398	1,568	6,975	6.48	2.94
2000.500.0125	20.00	508	5.00	127	125	22	4.71	120	15.29	388	1,911	8,502	7.47	3.39
2000.500.0150	20.00	508	5.00	127	150	26	5.22	133	14.78	375	2,216	9,859	8.75	3.97
2000.500.0175	20.00	508	5.00	127	175	31	5.41	138	14.58	370	2,553	11,356	9.35	4.24

Protective Spring Bags-Pair (Fits 5.00" O.D. Springs)	Quantity	Spring Diameter		Spring Length	
		inch	mm	inch	mm
ESB14.500	2	5.00	127	12" - 14"	305-356
ESB16.500	2	5.00	127	14" - 16"	305-356





SPRING LOCATOR | 4.00" O.D.

Part Number	Inside Diameter (Perch O.D.)		Outside Diameter (Perch O.D.)	
	inch	mm	inch	mm
Spring Locator (I.D = Perch Diameter / O.D. = Spring I.D.)				
ESL350.4125	3.50	89	4.125	105
ESL350.4188	3.50	89	4.188	106
ESL375.4000	3.75	95	4.000	102
ESL375.4063	3.75	95	4.063	103
ESL375.4125	3.75	95	4.125	105
ESL375.4188	3.75	95	4.188	106
ESL375.4313	3.75	95	4.313	110
ESL375.4375	3.75	95	4.375	111



6TH COIL SPRING | 5.00" O.D.

Part Number	Length		Outside Diameter		Rate		Block Height		Travel		Load at Block Height		Weight	
	inch	mm	inch	mm	lbs/inch	N/mm	inch	mm	inch	mm	lbs	N	lbs	kgs
6th Coil Spring														
0400.500.0400	4.00	102	5.00	127	400	70	1.46	37	2.54	65	1,017	4,525	1.65	0.75
0400.500.0450	4.00	102	5.00	127	450	79	1.42	36	2.58	66	1,162	5,169	1.70	0.77
0400.500.0500	4.00	102	5.00	127	500	88	1.50	38	2.50	64	1,252	5,568	1.76	0.80

Protective Spring Bag (Fits 6th Coil Springs)	Quantity	Spring Diameter		Spring Length	
		inch	mm	inch	mm
ESB5.400	1	5.00	127	4.00	102



PULL BAR SPRING | 5.00" O.D.

Part Number	Length		Outside Diameter		Rate		Block Height		Travel		Load at Block Height		Weight	
	inch	mm	inch	mm	lbs/inch	N/mm	inch	mm	inch	mm	lbs	N	lbs	kgs
Pull Bar Spring														
0675.500.1000	6.75	171	5.00	127	500/1000	88/175	3.66	93	3.09	78	2,711	12,059	6.15	2.79
0675.500.1200	6.75	171	5.00	127	600/1200	105/210	3.50	89	3.25	82	3,895	17,324	5.88	2.67
0675.500.1500	6.75	171	5.00	127	750/1500	131/263	3.30	84	3.45	88	3,196	14,216	6.61	3.00
0675.500.2000	6.75	171	5.00	127	600/2000	105/350	3.98	101	2.77	70	5,547	24,675	6.96	3.16
0700.500.0600	7.00	178	5.00	127	600	105	2.64	67	4.36	111	2,618	11,645	3.92	1.78
0700.500.0800	7.00	178	5.00	127	800	140	2.76	70	4.24	108	3,390	15,079	4.43	2.01

Protective Spring Bag (Fits Pull Bar Springs)	Quantity	Spring Diameter		Spring Length	
		inch	mm	inch	mm
ESB875.500	1	5.00	127	8.75	222



COILOVER | 60mm I.D.

Part Number	Length		Inside Diameter		Rate		Block Height		Travel		Load at Block Height		Weight	
	mm	inch	mm	inch	N/mm	lbs/inch	mm	inch	mm	inch	N	lbs	kgs	lbs
80 (length in mm)														
80-60-0100	80	3.15	61.75	2.43	100	571	29.14	1.15	50.86	2.00	5,086	1,143	0.35	0.77
80-60-0120	80	3.15	61.75	2.43	120	685	30.71	1.21	49.29	1.94	5,915	1,330	0.39	0.86
80-60-0140	80	3.15	61.75	2.43	140	799	32.80	1.29	47.20	1.86	6,608	1,486	0.44	0.97
80-60-0160	80	3.15	61.75	2.43	160	913	32.55	1.28	47.45	1.87	7,592	1,707	0.45	0.99
80-60-0180	80	3.15	61.75	2.43	180	1027	35.20	1.39	44.80	1.76	8,064	1,813	0.51	1.13
80-60-0200	80	3.15	61.75	2.43	200	1142	37.95	1.49	42.05	1.66	8,410	1,891	0.58	1.28
80-60-0220	80	3.15	61.75	2.43	220	1256	35.65	1.40	44.35	1.75	9,757	2,193	0.54	1.20
80-60-0240	80	3.15	61.75	2.43	240	1370	36.43	1.43	43.58	1.72	10,458	2,351	0.57	1.26
80-60-0260	80	3.15	61.75	2.43	260	1484	37.20	1.46	42.80	1.69	11,128	2,502	0.60	1.32
80-60-0280	80	3.15	61.75	2.43	280	1598	37.36	1.47	42.64	1.68	11,939	2,684	0.61	1.35
80-60-0300	80	3.15	61.75	2.43	300	1712	38.75	1.53	41.25	1.62	12,375	2,782	0.65	1.44
100 (length in mm)														
100-60-0070	100	3.94	61.75	2.43	70	400	33.75	1.33	66.25	2.61	4,638	1,043	0.39	0.87
100-60-0080	100	3.94	61.75	2.43	80	457	33.76	1.33	66.24	2.61	5,299	1,191	0.41	0.89
100-60-0090	100	3.94	61.75	2.43	90	514	34.20	1.35	65.80	2.59	5,922	1,331	0.42	0.93
100-60-0100	100	3.94	61.75	2.43	100	571	38.00	1.50	62.00	2.44	6,200	1,394	0.50	1.10
100-60-0110	100	3.94	61.75	2.43	110	628	38.44	1.51	61.56	2.42	6,772	1,522	0.52	1.15
100-60-0120	100	3.94	61.75	2.43	120	685	39.38	1.55	60.63	2.39	7,275	1,635	0.55	1.21
100-60-0140	100	3.94	61.75	2.43	140	799	41.80	1.65	58.20	2.29	8,148	1,832	0.61	1.35
100-60-0160	100	3.94	61.75	2.43	160	913	41.06	1.62	58.94	2.32	9,430	2,120	0.62	1.36
100-60-0180	100	3.94	61.75	2.43	180	1027	44.06	1.73	55.94	2.20	10,069	2,264	0.70	1.54
100-60-0200	100	3.94	61.75	2.43	200	1142	43.80	1.72	56.20	2.21	11,240	2,527	0.71	1.56
100-60-0220	100	3.94	61.75	2.43	220	1256	47.50	1.87	52.50	2.07	11,550	2,597	0.81	1.78
100-60-0240	100	3.94	61.75	2.43	240	1370	47.81	1.88	52.19	2.05	12,525	2,816	0.83	1.84
100-60-0260	100	3.94	61.75	2.43	260	1484	48.10	1.89	51.90	2.04	13,494	3,034	0.86	1.89
100-60-0280	100	3.94	61.75	2.43	280	1598	49.03	1.93	50.98	2.01	14,273	3,209	0.89	1.97
100-60-0300	100	3.94	61.75	2.43	300	1712	49.95	1.97	50.05	1.97	15,015	3,376	0.93	2.05
100-60-0320	100	3.94	61.75	2.43	320	1827	50.88	2.00	49.13	1.93	15,720	3,534	0.97	2.13
100-60-0340	100	3.94	61.75	2.43	340	1941	51.80	2.04	48.20	1.90	16,388	3,684	1.01	2.22
100-60-0360	100	3.94	61.75	2.43	360	2055	52.73	2.08	47.28	1.86	17,019	3,826	1.05	2.31
100-60-0380	100	3.94	61.75	2.43	380	2169	53.65	2.11	46.35	1.82	17,613	3,960	1.09	2.40
100-60-0400	100	3.94	61.75	2.43	400	2283	52.20	2.06	47.80	1.88	19,120	4,298	1.06	2.33
100-60-0450	100	3.94	61.75	2.43	450	2569	56.43	2.22	43.58	1.72	19,609	4,408	1.21	2.68
100-60-0500	100	3.94	61.75	2.43	500	2854	55.80	2.20	44.20	1.74	22,100	4,968	1.22	2.69
100-60-0550	100	3.94	61.75	2.43	550	3139	57.60	2.27	42.40	1.67	23,320	5,243	1.31	2.89
100-60-0600	100	3.94	61.75	2.43	600	3425	57.69	2.27	42.31	1.67	25,388	5,707	1.34	2.95
100-60-0650	100	3.94	61.75	2.43	650	3710	60.30	2.37	39.70	1.56	25,805	5,801	1.45	3.20
100-60-0700	100	3.94	61.75	2.43	700	3996	60.35	2.38	39.65	1.56	27,755	6,240	1.48	3.26
100-60-0750	100	3.94	61.75	2.43	750	4281	60.38	2.38	39.63	1.56	29,719	6,681	1.50	3.31
100-60-0800	100	3.94	61.75	2.43	800	4566	63.01	2.48	36.99	1.46	29,590	6,652	1.63	3.58
120 (length in mm)														
120-60-0040	120	4.72	61.75	2.43	40	228	32.80	1.29	87.20	3.43	3,488	784	0.34	0.74
120-60-0050	120	4.72	61.75	2.43	50	285	34.85	1.37	85.15	3.35	4,258	957	0.38	0.85
120-60-0060	120	4.72	61.75	2.43	60	342	37.35	1.47	82.65	3.25	4,959	1,115	0.44	0.97
120-60-0070	120	4.72	61.75	2.43	70	400	40.85	1.61	79.15	3.12	5,541	1,246	0.51	1.13
120-60-0080	120	4.72	61.75	2.43	80	457	40.46	1.59	79.54	3.13	6,363	1,430	0.52	1.15
120-60-0090	120	4.72	61.75	2.43	90	514	44.59	1.76	75.41	2.97	6,787	1,526	0.61	1.34
120-60-0100	120	4.72	61.75	2.43	100	571	45.15	1.78	74.85	2.95	7,485	1,683	0.63	1.39
120-60-0110	120	4.72	61.75	2.43	110	628	45.69	1.80	74.31	2.93	8,174	1,838	0.66	1.45
120-60-0120	120	4.72	61.75	2.43	120	685	46.75	1.84	73.25	2.88	8,790	1,976	0.69	1.52
120-60-0140	120	4.72	61.75	2.43	140	799	48.88	1.92	71.13	2.80	9,958	2,239	0.76	1.68
120-60-0160	120	4.72	61.75	2.43	160	913	51.60	2.03	68.40	2.69	10,944	2,460	0.84	1.86
120-60-0180	120	4.72	61.75	2.43	180	1027	55.00	2.17	65.00	2.56	11,700	2,630	0.94	2.08



COILOVER | 60mm I.D.

Part Number	Length		Inside Diameter		Rate		Block Height		Travel		Load at Block Height		Weight	
	mm	inch	mm	inch	N/mm	lbs/inch	mm	inch	mm	inch	N	lbs	kgs	lbs
120-60-0200	120	4.72	61.75	2.43	200	1142	54.83	2.16	65.18	2.57	13,035	2,930	0.96	2.12
120-60-0220	120	4.72	61.75	2.43	220	1256	58.30	2.30	61.70	2.43	13,574	3,052	1.07	2.36
120-60-0240	120	4.72	61.75	2.43	240	1370	58.73	2.31	61.28	2.41	14,706	3,306	1.10	2.43
120-60-0260	120	4.72	61.75	2.43	260	1484	58.44	2.30	61.56	2.42	16,006	3,598	1.12	2.47
120-60-0280	120	4.72	61.75	2.43	280	1598	59.50	2.34	60.50	2.38	16,940	3,808	1.16	2.57
120-60-0300	120	4.72	61.75	2.43	300	1712	59.85	2.36	60.15	2.37	18,045	4,057	1.20	2.64
120-60-0320	120	4.72	61.75	2.43	320	1827	60.90	2.40	59.10	2.33	18,912	4,252	1.24	2.74
120-60-0340	120	4.72	61.75	2.43	340	1941	61.95	2.44	58.05	2.29	19,737	4,437	1.29	2.84
120-60-0360	120	4.72	61.75	2.43	360	2055	63.00	2.48	57.00	2.24	20,520	4,613	1.34	2.95
140 (length in mm)														
140-60-0050	140	5.51	61.75	2.43	50	285	43.20	1.70	96.80	3.81	4,840	1,088	0.51	1.13
140-60-0060	140	5.51	61.75	2.43	60	342	46.08	1.81	93.93	3.70	5,636	1,267	0.58	1.28
140-60-0070	140	5.51	61.75	2.43	70	400	44.85	1.77	95.15	3.75	6,661	1,497	0.58	1.28
140-60-0080	140	5.51	61.75	2.43	80	457	48.69	1.92	91.31	3.59	7,305	1,642	0.67	1.47
140-60-0090	140	5.51	61.75	2.43	90	514	53.21	2.09	86.79	3.42	7,811	1,756	0.77	1.70
140-60-0100	140	5.51	61.75	2.43	100	571	53.90	2.12	86.10	3.39	8,610	1,936	0.80	1.77
140-60-0110	140	5.51	61.75	2.43	110	628	54.00	2.13	86.00	3.39	9,460	2,127	0.82	1.81
140-60-0120	140	5.51	61.75	2.43	120	685	55.20	2.17	84.80	3.34	10,176	2,288	0.86	1.90
140-60-0130	140	5.51	61.75	2.43	130	742	55.81	2.20	84.19	3.31	10,944	2,460	0.89	1.97
140-60-0140	140	5.51	61.75	2.43	140	799	57.00	2.24	83.00	3.27	11,620	2,612	0.94	2.06
140-60-0150	140	5.51	61.75	2.43	150	856	58.80	2.31	81.20	3.20	12,180	2,738	0.99	2.18
140-60-0160	140	5.51	61.75	2.43	160	913	60.00	2.36	80.00	3.15	12,800	2,878	1.03	2.28
140-60-0170	140	5.51	61.75	2.43	170	970	61.84	2.43	78.16	3.08	13,288	2,987	1.09	2.40
140-60-0180	140	5.51	61.75	2.43	180	1027	63.70	2.51	76.30	3.00	13,734	3,088	1.15	2.54
140-60-0190	140	5.51	61.75	2.43	190	1085	64.93	2.56	75.08	2.96	14,264	3,207	1.20	2.64
140-60-0200	140	5.51	61.75	2.43	200	1142	66.83	2.63	73.18	2.88	14,635	3,290	1.26	2.78
140-60-0220	140	5.51	61.75	2.43	220	1256	66.69	2.63	73.31	2.89	16,129	3,626	1.29	2.83
140-60-0240	140	5.51	61.75	2.43	240	1370	71.25	2.81	68.75	2.71	16,500	3,709	1.43	3.16
140-60-0260	140	5.51	61.75	2.43	260	1484	71.05	2.80	68.95	2.71	17,927	4,030	1.46	3.22
140-60-0280	140	5.51	61.75	2.43	280	1598	71.54	2.82	68.46	2.70	19,170	4,309	1.50	3.30
140-60-0300	140	5.51	61.75	2.43	300	1712	72.00	2.83	68.00	2.68	20,400	4,586	1.54	3.39
140-60-0350	140	5.51	61.75	2.43	350	1998	76.39	3.01	63.61	2.50	22,264	5,005	1.73	3.82
140-60-0400	140	5.51	61.75	2.43	400	2283	77.19	3.04	62.81	2.47	25,125	5,648	1.82	4.00
140-60-0450	140	5.51	61.75	2.43	450	2569	78.73	3.10	61.28	2.41	27,574	6,199	1.92	4.23
140-60-0500	140	5.51	61.75	2.43	500	2854	84.88	3.34	55.13	2.17	27,563	6,196	2.19	4.82
170 (length in mm)														
170-60-0030	170	6.69	61.75	2.43	30	171	45.79	1.80	124.21	4.89	3,726	838	0.49	1.09
170-60-0040	170	6.69	61.75	2.43	40	228	51.30	2.02	118.70	4.67	4,748	1,067	0.61	1.35
170-60-0050	170	6.69	61.75	2.43	50	285	53.20	2.09	116.80	4.60	5,840	1,313	0.67	1.48
170-60-0060	170	6.69	61.75	2.43	60	342	56.00	2.20	114.00	4.49	6,840	1,538	0.75	1.65
170-60-0070	170	6.69	61.75	2.43	70	400	65.58	2.58	104.43	4.11	7,310	1,643	0.96	2.11
170-60-0080	170	6.69	61.75	2.43	80	457	63.80	2.51	106.20	4.18	8,496	1,910	0.95	2.10
170-60-0090	170	6.69	61.75	2.43	90	514	69.00	2.72	101.00	3.98	9,090	2,044	1.09	2.40
170-60-0100	170	6.69	61.75	2.43	100	571	68.74	2.71	101.26	3.99	10,126	2,276	1.11	2.45
170-60-0110	170	6.69	61.75	2.43	110	628	69.00	2.72	101.00	3.98	11,110	2,498	1.14	2.52
170-60-0120	170	6.69	61.75	2.43	120	685	69.83	2.75	100.18	3.94	12,021	2,702	1.18	2.61
170-60-0130	170	6.69	61.75	2.43	130	742	70.63	2.78	99.38	3.91	12,919	2,904	1.22	2.70
170-60-0140	170	6.69	61.75	2.43	140	799	77.35	3.05	92.65	3.65	12,971	2,916	1.41	3.10
170-60-0150	170	6.69	61.75	2.43	150	856	78.84	3.10	91.16	3.59	13,674	3,074	1.47	3.23
170-60-0160	170	6.69	61.75	2.43	160	913	80.33	3.16	89.68	3.53	14,348	3,226	1.53	3.37
170-60-0170	170	6.69	61.75	2.43	170	970	81.81	3.22	88.19	3.47	14,992	3,370	1.59	3.50
170-60-0180	170	6.69	61.75	2.43	180	1027	83.38	3.09	91.63	3.61	16,493	3,708	1.52	3.35
170-60-0190	170	6.69	61.75	2.43	190	1085	79.80	3.14	90.20	3.55	17,138	3,853	1.58	3.49
170-60-0200	170	6.69	61.75	2.43	200	1142	81.94	3.23	88.06	3.47	17,613	3,959	1.66	3.66



COILOVER | 60mm I.D.

Part Number	Length		Inside Diameter		Rate		Block Height		Travel		Load at Block Height		Weight	
	mm	inch	mm	inch	N/mm	lbs/inch	mm	inch	mm	inch	N	lbs	kgs	lbs
170-60-0220	170	6.69	61.75	2.43	220	1,256	87.03	3.43	82.98	3.27	18,255	4,104	1.84	4.05
170-60-0240	170	6.69	61.75	2.43	240	1,370	86.25	3.40	83.75	3.30	20,100	4,519	1.86	4.09
170-60-0260	170	6.69	61.75	2.43	260	1,484	91.45	3.60	78.55	3.09	20,423	4,591	2.05	4.52
170-60-0280	170	6.69	61.75	2.43	280	1,598	91.35	3.60	78.65	3.10	22,022	4,951	2.09	4.60
170-60-0300	170	6.69	61.75	2.43	300	1,712	91.20	3.59	78.80	3.10	23,640	5,314	2.12	4.67
200 (length in mm)														
200-60-0030	200	7.87	61.75	2.43	30	171	58.19	2.29	141.81	5.58	4,254	956	0.67	1.49
200-60-0040	200	7.87	61.75	2.43	40	228	63.65	2.51	136.35	5.37	5,454	1,226	0.81	1.78
200-60-0050	200	7.87	61.75	2.43	50	285	65.00	2.56	135.00	5.31	6,750	1,517	0.88	1.93
200-60-0060	200	7.87	61.75	2.43	60	342	74.18	2.92	125.83	4.95	7,550	1,697	1.09	2.40
200-60-0070	200	7.87	61.75	2.43	70	400	71.50	2.81	128.50	5.06	8,995	2,022	1.07	2.37
200-60-0080	200	7.87	61.75	2.43	80	457	76.48	3.01	123.53	4.86	9,882	2,222	1.21	2.67
200-60-0090	200	7.87	61.75	2.43	90	514	81.60	3.21	118.40	4.66	10,656	2,396	1.36	2.99
200-60-0100	200	7.87	61.75	2.43	100	571	80.85	3.18	119.15	4.69	11,915	2,679	1.38	3.03
200-60-0110	200	7.87	61.75	2.43	110	628	87.34	3.44	112.66	4.44	12,393	2,786	1.56	3.44
200-60-0120	200	7.87	61.75	2.43	120	685	87.75	3.45	112.25	4.42	13,470	3,028	1.60	3.53
250 (length in mm)														
250-60-0025	250	9.84	61.75	2.43	25	143	76.05	2.99	173.95	6.85	4,349	978	0.92	2.02
250-60-0030	250	9.84	61.75	2.43	30	171	73.08	2.88	176.93	6.97	5,308	1,193	0.91	2.00
250-60-0035	250	9.84	61.75	2.43	35	200	78.98	3.11	171.03	6.73	5,986	1,346	1.04	2.29
250-60-0040	250	9.84	61.75	2.43	40	228	78.50	3.09	171.50	6.75	6,860	1,542	1.06	2.34
250-60-0045	250	9.84	61.75	2.43	45	257	86.10	3.39	163.90	6.45	7,376	1,658	1.23	2.72
250-60-0050	250	9.84	61.75	2.43	50	285	86.54	3.41	163.46	6.44	8,173	1,837	1.27	2.81
250-60-0060	250	9.84	61.75	2.43	60	342	88.88	3.50	161.13	6.34	9,668	2,173	1.38	3.04
250-60-0070	250	9.84	61.75	2.43	70	400	101.40	3.99	148.60	5.85	10,402	2,338	1.70	3.74
250-60-0080	250	9.84	61.75	2.43	80	457	98.00	3.86	152.00	5.98	12,160	2,734	1.68	3.70
250-60-0090	250	9.84	61.75	2.43	90	514	103.91	4.09	146.09	5.75	13,148	2,956	1.86	4.11
250-60-0100	250	9.84	61.75	2.43	100	571	110.64	4.36	139.36	5.49	13,936	3,133	2.08	4.58
250-60-0110	250	9.84	61.75	2.43	110	628	110.03	4.33	139.98	5.51	15,397	3,461	2.11	4.66
250-60-0120	250	9.84	61.75	2.43	120	685	117.60	4.63	132.40	5.21	15,888	3,572	2.36	5.20
300 (length in mm)														
300-60-0020	300	11.81	61.75	2.43	20	114	82.25	3.24	217.75	8.57	4,355	979	0.96	2.12
300-60-0025	300	11.81	61.75	2.43	25	143	85.56	3.37	214.44	8.44	5,361	1,205	1.06	2.35
300-60-0030	300	11.81	61.75	2.43	30	171	90.68	3.57	209.33	8.24	6,280	1,412	1.20	2.64
300-60-0035	300	11.81	61.75	2.43	35	200	97.38	3.83	202.63	7.98	7,092	1,594	1.36	3.00
300-60-0040	300	11.81	61.75	2.43	40	228	105.35	4.15	194.65	7.66	7,786	1,750	1.56	3.43
300-60-0045	300	11.81	61.75	2.43	45	257	104.50	4.11	195.50	7.70	8,798	1,978	1.59	3.50
300-60-0050	300	11.81	61.75	2.43	50	285	114.43	4.51	185.58	7.31	9,279	2,086	1.83	4.03
300-60-0060	300	11.81	61.75	2.43	60	342	115.80	4.56	184.20	7.25	11,052	2,485	1.94	4.29
300-60-0070	300	11.81	61.75	2.43	70	400	129.41	5.09	170.59	6.72	11,941	2,684	2.33	5.15
300-60-0080	300	11.81	61.75	2.43	80	457	135.15	5.32	164.85	6.49	13,188	2,965	2.55	5.62
300-60-0090	300	11.81	61.75	2.43	90	514	130.95	5.16	169.05	6.66	15,215	3,420	2.52	5.56
300-60-0100	300	11.81	61.75	2.43	100	571	138.60	5.46	161.40	6.35	16,140	3,628	2.79	6.15
350 (length in mm)														
350-60-0020	350	13.78	61.75	2.43	20	114	92.70	3.65	257.30	10.13	5,146	1,157	1.12	2.47
350-60-0025	350	13.78	61.75	2.43	25	143	106.76	4.20	243.24	9.58	6,081	1,367	1.42	3.12
350-60-0030	350	13.78	61.75	2.43	30	171	111.73	4.40	238.28	9.38	7,148	1,607	1.57	3.46
350-60-0035	350	13.78	61.75	2.43	35	200	130.90	5.15	219.10	8.63	7,669	1,724	1.99	4.40
350-60-0040	350	13.78	61.75	2.43	40	228	127.69	5.03	222.31	8.75	8,893	1,999	2.00	4.40
350-60-0045	350	13.78	61.75	2.43	45	257	125.93	4.96	224.08	8.82	10,083	2,267	2.02	4.45
350-60-0050	350	13.78	61.75	2.43	50	285	136.20	5.36	213.80	8.42	10,690	2,403	2.29	5.06
350-60-0055	350	13.78	61.75	2.43	55	314	136.59	5.38	213.41	8.40	11,738	2,639	2.36	5.19



COILOVER | 60mm I.D.

Part Number	Length		Inside Diameter		Rate		Block Height		Travel		Load at Block Height		Weight	
	mm	inch	mm	inch	N/mm	lbs/inch	mm	inch	mm	inch	N	lbs	kgs	lbs
Tender/Linear														
35-60-0065	59	2.32	61.75	2.43	65	371	22.00	0.87	37.00	1.46	2,431	547	0.45	0.99
40-60-0020	55	2.17	61.75	2.43	20	114	15.00	0.59	40.00	1.57	804	181	0.25	0.55
40-60-0030	62	2.44	61.75	2.43	30	171	20.00	0.79	42.00	1.65	1,260	283	0.34	0.75
40-60-0040	71	2.80	61.75	2.43	40	229	31.00	1.22	40.00	1.57	1,616	363	0.65	1.43
40-60-0050	70	2.76	61.75	2.43	50	286	26.00	1.02	44.00	1.73	2,180	490	0.56	1.23
40-60-0055	67	2.64	61.75	2.43	55	314	24.00	0.94	43.00	1.69	2,365	532	0.50	1.10
40-60-0060	65	2.56	61.75	2.43	60	343	23.00	0.91	42.00	1.65	2,514	565	0.48	1.06
40-60-0070	73	2.87	61.75	2.43	70	400	30.00	1.18	43.00	1.69	3,042	684	0.57	1.26
50-60-0020	78	3.07	61.75	2.43	20	114	28.00	1.10	50.00	1.97	1,000	225	0.47	1.04
50-60-0030	91	3.58	61.75	2.43	30	171	38.00	1.50	53.00	2.09	1,578	355	0.82	1.81
50-60-0065	85	3.35	61.75	2.43	65	371	32.00	1.26	53.00	2.09	3,447	775	0.62	1.37
50-60-0120	90	3.54	61.75	2.43	120	686	40.00	1.57	50.00	1.97	5,995	1348	0.78	1.72
60-60-0030	101	3.98	61.75	2.43	30	171	38.00	1.50	63.00	2.48	1,878	422	0.82	1.81
60-60-0040	111	4.37	61.75	2.43	40	229	49.00	1.93	62.00	2.44	2,510	564	0.95	2.09
60-60-0050	101	3.98	61.75	2.43	50	286	41.00	1.61	60.00	2.36	3,020	679	0.86	1.90
60-60-0060	97	3.82	61.75	2.43	60	343	34.00	1.34	63.00	2.48	3,798	854	0.66	1.45
60-60-0070	70	2.76	61.75	2.43	70	400	37.00	1.46	33.00	1.30	4,183	940	0.72	1.59
70-60-0030	111	4.37	61.75	2.43	30	171	38.00	1.50	73.00	2.87	2,178	490	0.82	1.81
80-60-0010	104	4.09	61.75	2.43	10	57	24.00	0.94	80.00	3.15	800	180	0.41	0.90
100-60-0010	124	4.88	61.75	2.43	10	57	24.00	0.94	100.00	3.94	1,000	225	0.41	0.90
Tender/Progressive														
50-60-0040/0120	103	4.06	61.75	2.43	40/120	229/686	53.00	2.09	50.00	1.97	4,000	899	0.96	2.12
50-60-0060/0150	121	4.76	61.75	2.43	60/150	343/857	68.50	2.70	52.50	2.07	5,200	1169	1.25	2.76
Helper														
60-60-0002	75	2.95	61.75	2.43	2	11	12.50	0.49	60.00	2.36	120	27	0.13	0.29
Hardware														
1-60-00 (Spring Coupler)														
Adapter														
ADAPTER60-250 (Perch Adapter 60mm to 2.50")														



COILOVER | 65mm I.D.

Part Number	Length		Inside Diameter		Rate		Block Height		Travel		Load at Block Height		Weight	
	mm	inch	mm	inch	N/mm	lbs/inch	mm	inch	mm	inch	N	lbs	kgs	lbs
180 (length in mm)														
180-065-T060	180	7.09	65	2.56	59	336	61.43	2.42	118.58	4.67	6,979	1,569	0.91	2.01
180-065-T070	180	7.09	65	2.56	69	392	71.44	2.81	108.56	4.27	7,455	1,676	1.15	2.53
180-065-T080	180	7.09	65	2.56	78	448	69.58	2.74	110.43	4.35	8,666	1,948	1.15	2.53
180-065-T090	180	7.09	65	2.56	88	504	74.40	2.93	105.60	4.16	9,323	2,096	1.29	2.84
180-065-T100	180	7.09	65	2.56	98	560	74.11	2.92	105.89	4.17	10,388	2,335	1.31	2.89
180-065-T110	180	7.09	65	2.56	108	616	80.33	3.16	99.68	3.92	10,756	2,418	1.49	3.28
180-065-T120	180	7.09	65	2.56	118	672	80.60	3.17	99.40	3.91	11,701	2,630	1.53	3.37
200 (length in mm)														
200-065-T040	200	7.87	65	2.56	39	224	64.35	2.53	135.65	5.34	5,323	1,197	0.88	1.94
200-065-T050	200	7.87	65	2.56	49	280	71.40	2.81	128.60	5.06	6,308	1,418	1.06	2.34
200-065-T060	200	7.87	65	2.56	59	336	74.25	2.92	125.75	4.95	7,402	1,664	1.17	2.58
200-065-T070	200	7.87	65	2.56	69	392	77.63	3.06	122.38	4.82	8,403	1,889	1.28	2.82
200-065-T080	200	7.87	65	2.56	78	448	82.20	3.24	117.80	4.64	9,245	2,078	1.43	3.15
200-065-T090	200	7.87	65	2.56	88	504	87.50	3.44	112.50	4.43	9,933	2,233	1.59	3.50



COILOVER | 65mm I.D.

Part Number	Length		Inside Diameter		Rate		Block Height		Travel		Load at Block Height		Weight	
	mm	inch	mm	inch	N/mm	lbs/inch	mm	inch	mm	inch	N	lbs	kgs	lbs
200-065-T100	200	7.87	65	2.56	98	560	86.70	3.41	113.30	4.46	11,115	2,499	1.62	3.57
200-065-T110	200	7.87	65	2.56	108	616	86.45	3.40	113.55	4.47	12,253	2,755	1.65	3.64
200-065-T120	200	7.87	65	2.56	118	672	93.15	3.67	106.85	4.21	12,578	2,828	1.86	4.10
200-065-T140	200	7.87	65	2.56	137	784	94.50	3.72	105.50	4.15	14,489	3,257	1.96	4.32
200-065-T160	200	7.87	65	2.56	157	896	96.43	3.80	103.58	4.08	16,257	3,655	2.09	4.61
230 (length in mm)														
230-065-T035	230	9.06	65	2.56	34	196	79.50	3.13	150.50	5.93	5,167	1,162	1.13	2.49
250 (length in mm)														
250-065-T050	250	9.84	65	2.56	49	280	94.50	3.72	155.50	6.12	7,627	1,715	1.53	3.37
250-065-T060	250	9.84	65	2.56	59	336	96.35	3.79	153.65	6.05	9,044	2,033	1.64	3.61
250-065-T080	250	9.84	65	2.56	78	448	104.55	4.12	145.45	5.73	11,415	2,566	1.96	4.32
250-065-T100	250	9.84	65	2.56	98	560	116.88	4.60	133.13	5.24	13,060	2,936	2.39	5.27



COILOVER | 70mm I.D.

Part Number	Length		Inside Diameter		Rate		Block Height		Travel		Load at Block Height		Weight	
	mm	inch	mm	inch	N/mm	lbs/inch	mm	inch	mm	inch	N	lbs	kgs	lbs
200 (length in mm)														
200-70-0050	200	7.87	70	2.76	50	285	57.23	2.25	142.77	5.62	7,139	1,605	0.92	2.03
200-70-0055	200	7.87	70	2.76	55	314	63.25	2.49	136.75	5.38	7,521	1,691	1.08	2.37
200-70-0060	200	7.87	70	2.76	60	342	64.69	2.55	135.31	5.33	8,119	1,825	1.13	2.49
200-70-0065	200	7.87	70	2.76	65	371	66.13	2.60	133.87	5.27	8,702	1,956	1.18	2.61
200-70-0070	200	7.87	70	2.76	70	400	67.56	2.66	132.44	5.21	9,271	2,084	1.24	2.73
200-70-0075	200	7.87	70	2.76	75	428	69.60	2.74	130.40	5.13	9,780	2,199	1.31	2.88
200-70-0080	200	7.87	70	2.76	80	457	71.05	2.80	128.95	5.08	10,316	2,319	1.37	3.01
200-70-0085	200	7.87	70	2.76	85	485	73.13	2.88	126.87	5.00	10,784	2,424	1.44	3.18
200-70-0090	200	7.87	70	2.76	90	514	75.86	2.99	124.14	4.89	11,172	2,512	1.53	3.37
200-70-0100	200	7.87	70	2.76	100	571	74.75	2.94	125.25	4.93	12,525	2,816	1.54	3.39
200-70-0110	200	7.87	70	2.76	110	628	80.33	3.16	119.67	4.71	13,164	2,959	1.73	3.81
200-70-0120	200	7.87	70	2.76	120	685	80.44	3.17	119.56	4.71	14,348	3,225	1.77	3.90
225 (length in mm)														
225-70-0050	225	8.86	70	2.76	50	285	68.75	2.71	156.25	6.15	7,813	1,756	1.17	2.59
225-70-0055	225	8.86	70	2.76	55	314	69.19	2.72	155.81	6.13	8,570	1,927	1.21	2.67
225-70-0060	225	8.86	70	2.76	60	342	76.38	3.01	148.62	5.85	8,918	2,005	1.41	3.10
225-70-0065	225	8.86	70	2.76	65	371	78.00	3.07	147.00	5.79	9,555	2,148	1.47	3.24
225-70-0070	225	8.86	70	2.76	70	400	79.63	3.13	145.37	5.72	10,176	2,288	1.54	3.39
225-70-0075	225	8.86	70	2.76	75	428	81.25	3.20	143.75	5.66	10,781	2,424	1.61	3.54
225-70-0080	225	8.86	70	2.76	80	457	83.51	3.29	141.49	5.57	11,319	2,545	1.69	3.72
225-70-0085	225	8.86	70	2.76	85	485	85.80	3.38	139.20	5.48	11,832	2,660	1.78	3.91
225-70-0090	225	8.86	70	2.76	90	514	88.11	3.47	136.89	5.39	12,320	2,770	1.86	4.11
225-70-0100	225	8.86	70	2.76	100	571	87.08	3.43	137.92	5.43	13,793	3,101	1.88	4.15
225-70-0110	225	8.86	70	2.76	110	628	92.40	3.64	132.60	5.22	14,586	3,279	2.08	4.59
225-70-0120	225	8.86	70	2.76	120	685	91.91	3.62	133.09	5.24	15,971	3,590	2.11	4.66
250 (length in mm)														
250-70-0040	250	9.84	70	2.76	40	228	75.25	2.96	174.75	6.88	6,990	1,571	1.26	2.77
250-70-0045	250	9.84	70	2.76	45	257	74.80	2.94	175.20	6.90	7,884	1,772	1.28	2.82
250-70-0050	250	9.84	70	2.76	50	285	81.65	3.21	168.35	6.63	8,418	1,892	1.47	3.24
250-70-0055	250	9.84	70	2.76	55	314	82.25	3.24	167.75	6.60	9,226	2,074	1.52	3.35
250-70-0060	250	9.84	70	2.76	60	342	83.40	3.28	166.60	6.56	9,996	2,247	1.58	3.48
250-70-0065	250	9.84	70	2.76	65	371	84.53	3.33	165.47	6.51	10,756	2,418	1.64	3.61



COILOVER | 70mm I.D.

Part Number	Length		Inside Diameter		Rate		Block Height		Travel		Load at Block Height		Weight	
	mm	inch	mm	inch	N/mm	lbs/inch	mm	inch	mm	inch	N	lbs	kgs	lbs
250-70-0070	250	9.84	70	2.76	70	400	93.08	3.66	156.92	6.18	10,985	2,469	1.89	4.16
250-70-0075	250	9.84	70	2.76	75	428	94.90	3.74	155.10	6.11	11,633	2,615	1.97	4.34
250-70-0080	250	9.84	70	2.76	80	457	97.39	3.83	152.61	6.01	12,209	2,745	2.07	4.56
250-70-0085	250	9.84	70	2.76	85	485	99.23	3.91	150.77	5.94	12,816	2,881	2.15	4.74
250-70-0090	250	9.84	70	2.76	90	514	101.75	4.01	148.25	5.84	13,343	3,000	2.25	4.97
250-70-0100	250	9.84	70	2.76	100	571	100.10	3.94	149.90	5.90	14,990	3,370	2.26	4.99
250-70-0110	250	9.84	70	2.76	110	628	105.85	4.17	144.15	5.68	15,857	3,565	2.49	5.50
250-70-0120	250	9.84	70	2.76	120	685	105.46	4.15	144.54	5.69	17,345	3,899	2.53	5.58
300 (length in mm)														
300-70-0020	300	11.81	70	2.76	20	114	73.54	2.90	226.46	8.92	4,529	1,018	1.04	2.29
300-70-0025	300	11.81	70	2.76	25	143	75.56	2.97	224.44	8.84	5,611	1,261	1.13	2.50
300-70-0030	300	11.81	70	2.76	30	171	79.44	3.13	220.56	8.68	6,617	1,488	1.26	2.78
300-70-0035	300	11.81	70	2.76	35	200	84.39	3.32	215.61	8.49	7,546	1,697	1.41	3.11
300-70-0040	300	11.81	70	2.76	40	228	90.56	3.57	209.44	8.25	8,378	1,883	1.60	3.52
300-70-0045	300	11.81	70	2.76	45	257	98.11	3.86	201.89	7.95	9,085	2,042	1.82	4.01
300-70-0050	300	11.81	70	2.76	50	285	97.20	3.83	202.80	7.98	10,140	2,280	1.85	4.07
300-70-0055	300	11.81	70	2.76	55	314	106.25	4.18	193.75	7.63	10,656	2,396	2.12	4.67
300-70-0060	300	11.81	70	2.76	60	342	106.46	4.19	193.54	7.62	11,612	2,611	2.17	4.78
350 (length in mm)														
350-70-0020	350	13.78	70	2.76	20	114	91.65	3.61	258.35	10.17	5,167	1,162	1.38	3.04
350-70-0025	350	13.78	70	2.76	25	143	92.76	3.65	257.24	10.13	6,431	1,446	1.48	3.26
350-70-0030	350	13.78	70	2.76	30	171	106.15	4.18	243.85	9.60	7,316	1,645	1.83	4.04
350-70-0035	350	13.78	70	2.76	35	200	111.55	4.39	238.45	9.39	8,346	1,876	2.03	4.47
350-70-0040	350	13.78	70	2.76	40	228	118.20	4.65	231.80	9.13	9,272	2,084	2.25	4.97
350-70-0045	350	13.78	70	2.76	45	257	116.38	4.58	233.62	9.20	10,513	2,363	2.27	5.01
350-70-0050	350	13.78	70	2.76	50	285	124.95	4.92	225.05	8.86	11,253	2,530	2.55	5.63
350-70-0055	350	13.78	70	2.76	55	314	124.80	4.91	225.20	8.87	12,386	2,784	2.61	5.75
350-70-0060	350	13.78	70	2.76	60	342	135.00	5.31	215.00	8.46	12,900	2,900	2.95	6.50
Tender/Linear														
40-70-0030	81	3.19	70	2.76	30	171	41.00	1.61	40.00	1.57	1,200	270	0.91	2.01
40-70-0040	76	2.99	70	2.76	40	228	36.00	1.42	40.00	1.57	1,600	360	0.87	1.92
40-70-0050	60	2.36	70	2.76	50	286	20.00	0.79	40.00	1.57	2,000	450	0.47	1.04
40-70-0060	67	2.64	70	2.76	60	343	27.00	1.06	40.00	1.57	2,400	540	0.64	1.41
60-70-0045	98	3.86	70	2.76	45	257	38.00	1.50	60.00	2.36	2,700	607	0.85	1.90
70-70-0015	96	3.78	70	2.76	15	86	26.00	1.02	70.00	2.76	1,050	236	0.57	1.26
70-70-0030	94	3.70	70	2.76	30	171	24.00	0.94	70.00	2.76	2,100	472	0.53	1.17
70-70-0034	108	4.25	70	2.76	34	194	38.00	1.49	70.00	2.76	2,380	535	0.83	1.83
70-70-0038	111	4.37	70	2.76	38	217	41.00	1.61	70.00	2.76	2,660	598	0.80	1.76
70-70-0042	102	4.02	70	2.76	42	240	32.00	1.26	70.00	2.76	2,940	661	0.70	1.54
70-70-0046	106	4.17	70	2.76	46	263	36.00	1.41	70.00	2.76	3,220	724	0.70	1.54
70-70-0050	121	4.76	70	2.76	50	286	51.00	2.00	70.00	2.76	3,500	787	1.12	2.47
70-70-0060	114	4.49	70	2.76	60	343	44.00	1.73	70.00	2.76	4,200	944	0.97	2.14
Helper														
80-70-0003	100	3.94	70.00	2.76	3	17	19.80	0.78	80.20	3.16	241	54	0.26	0.57
Hardware														
1-70-00 (Spring Coupler)														



F3 | Standard

Part Number	Length		Inside Diameter		Rate		Block Height		Travel		Load at Block Height		Weight	
	mm	inch	mm	inch	N/mm	lbs/inch	mm	inch	mm	inch	N	lbs	kgs	lbs
F3 Standard														
F3 C400	141	5.55	36	1.42	70	400	74	2.91	67	2.64	4,672	1,050	0.50	1.10
F3 C450	139	5.47	36	1.42	79	451	78	3.07	61	2.40	4,806	1,080	0.54	1.19
F3 C500	136	5.35	36	1.42	88	503	77	3.03	59	2.32	5,117	1,150	0.54	1.19
F3 C550	134	5.28	36	1.42	96	548	79	3.11	55	2.17	5,295	1,190	0.59	1.30
F3 C600	133	5.24	36	1.42	105	600	75	2.95	58	2.28	6,096	1,370	0.59	1.30
F3 C700	130	5.12	36	1.42	123	702	79	3.11	51	2.01	6,274	1,410	0.64	1.41
F3 C800	128	5.04	36	1.42	140	800	78	3.07	50	1.97	6,986	1,571	0.64	1.41
F3 C900	127	5.00	36	1.42	158	902	76	2.99	51	2.01	8,099	1,821	0.68	1.50
F3 C1000	126	4.96	36	1.42	175	999	79	3.11	47	1.85	8,188	1,841	0.73	1.61
F3 C1100	125	4.92	36	1.42	193	1,102	80	3.15	45	1.77	8,588	1,931	0.73	1.61
F3 C1200	124	4.88	36	1.42	210	1,199	83	3.27	41	1.61	8,499	1,911	0.77	1.70
F3 C1300	123	4.84	36	1.42	228	1,302	83	3.27	40	1.57	8,989	2,021	0.82	1.81
F3 C1400	123	4.84	36	1.42	245	1,399	81	3.19	42	1.65	10,012	2,251	0.77	1.70
F3 C1500	122	4.80	36	1.42	263	1,502	80	3.15	42	1.65	11,036	2,481	0.77	1.70
F3 C1600	122	4.80	36	1.42	280	1,599	84	3.31	38	1.50	10,591	2,381	0.86	1.90
F3 C1800	121	4.76	36	1.42	315	1,799	82	3.23	39	1.54	12,281	2,761	0.86	1.90
F3 C2000	121	4.76	36	1.42	350	1,999	83	3.27	38	1.50	13,305	2,991	0.86	1.90



F3 | Short

Part Number	Length		Inside Diameter		Rate		Block Height		Travel		Load at Block Height		Weight	
	mm	inch	mm	inch	N/mm	lbs/inch	mm	inch	mm	inch	N	lbs	kgs	lbs
F3 Short														
40494	111	4.37	36	1.42	105	600	59	2.32	52	2.05	5,500	1,236	0.42	0.93
40495	103	4.06	36	1.42	114	651	55	2.17	48	1.89	5,500	1,236	0.39	0.86
40496	97	3.82	36	1.42	123	702	52	2.05	45	1.77	5,500	1,236	0.37	0.82
40497	91	3.58	36	1.42	131	748	49	1.93	42	1.65	5,500	1,236	0.35	0.77
40498	86	3.39	36	1.42	140	800	47	1.85	39	1.54	5,500	1,236	0.33	0.73
40499	82	3.23	36	1.42	149	851	45	1.77	37	1.46	5,500	1,236	0.32	0.71
40500	78	3.07	36	1.42	158	902	43	1.69	35	1.38	5,500	1,236	0.30	0.66
40501	74	2.91	36	1.42	166	948	41	1.61	33	1.30	5,500	1,236	0.29	0.64
40502	71	2.80	36	1.42	175	999	40	1.57	31	1.22	5,500	1,236	0.28	0.62
40503	68	2.68	36	1.42	184	1,051	38	1.50	30	1.18	5,500	1,236	0.27	0.60
40504	66	2.60	36	1.42	193	1,102	37	1.46	29	1.14	5,500	1,236	0.26	0.57
54587	63	2.48	36	1.42	201	1,148	36	1.42	27	1.06	5,500	1,236	0.25	0.55
54588	61	2.40	36	1.42	210	1,199	35	1.38	26	1.02	5,500	1,236	0.25	0.55
54589	59	2.32	36	1.42	219	1,251	34	1.34	25	0.98	5,500	1,236	0.24	0.53
54590	58	2.28	36	1.42	228	1,302	34	1.34	24	0.94	5,500	1,236	0.23	0.51

| **Your Local Dealer:**

PRODUCTION PLANTS

Europe Germany

Heinrich Eibach GmbH
Am Lennedamm 1
57413 Finnentrop
Phone +49 27 21 - 5 11-344
Fax +49 27 21 - 5 11-111
E-mail eibach@eibach.de

North America USA

Eibach Springs, Inc.
264 Mariah Circle
Corona, CA 92879-1751
Phone +1 951 256 - 83 00
Fax +1 951 256 - 83 33
E-mail eibach@eibach.com

Asia China

Eibach Springs Taicang Ltd.
No. 63 Ningbo Road
Taicang, Jiangsu
China, 215400
Phone +86 512 53 59 23 88
Fax +86 512 53 59 23 89
E-mail eibach@eibach-china.com

ENGINEERING & SALES

Australia

Eibach Suspension Technology P.T.Y. Ltd.
3/4 Prosperity Parade
Warriewood NSW 2102
Phone +61 2-99 99-36 55
Fax +61 2-99 99-38 55
E-mail eibach@eibach.com.au

South Africa

Eibach South Africa P.T.Y. Ltd.
P.O. Box 2495
North End 6045
Port Elizabeth
Phone +27 41 - 4 51 53 11
Fax +27 41 - 4 53 42 74
E-mail sales@eibachsa.co.za

United Kingdom

Eibach UK
25, Swannington Road
Broughton Astley
Leicestershire LE9 6TU
Phone +44 14 55 - 28 58 51
Fax +44 14 55 - 28 58 53
E-mail sales@eibach.co.uk

